



Juro

OZ PRO TACKLE

*Australia's Premier Fishing
& Outdoor Supplier*



Dealer Catalogue 2023 - 2024

CONTENTS

PAGES

 St.Croix Rods	3 - 11
 Jigstar International	12 - 21
 Strike Pro	22 - 43
 Tokuryo Line Lab	44 - 47
 TiCA Reels & Rods	48 - 52
 Ozflex Rods	53
 Juro Rods	54 - 55
 Juro Combos	56 - 58
 Senshi Grab 'N' Go Box	59
 Lumica Japan	60 - 63
 Eureka Lures	64 - 68
 Juro Lures	69 - 70
 SAX Scent	71
 Mapso Lures	72 - 73
 Bushranger Lures	74 - 78
 Daiichi Hooks	79 - 81
 Senshi Hooks, Rigs, Swivels & Jigs	82 - 86
 Novateur Bait Pumps	87
 Victory Knives	88 - 89
 Eureka Hunting	90 - 96
 Perfect Image	97 - 101
 Bushman Repellents	102
 Juro Leisure Wear & Sunglasses	103 - 106
 Juro Terminal Tackle	107 - 115
 McLaughlin's Berley & Oils	116 - 119



MOVE FORWARD.

It's what we've done each and every day here at St.Croix rods for the last 75 years in our unrelenting quest to give the anglers the upper hand. A lot happens during any given day in our St.Croix North & South factories. We take the best moments of discovery, learn from the rest, and move forward to the next day where the materials, technologies and processes may change but the goal remains the same: improving the angling experience. We are proud of our 75 years in business and the control we command over our rod-manufacturing process handcrafting the Best Rods on the Earth® right here in North America.

We are proud that we have been owned by the same family for the last 45 of those years. Above all though, we're grateful to our anglers for the trust and confidence you've placed in us to add value to your experience on the water. That's what drives us every day, because at St.Croix Rods, your passions are our passions....
and we're just getting started!



Exclusive Technologies

 <p>Integrated Poly Curve® Technology (IPC®)</p>  <p>Non IPC Blank have distinct transition points</p> <p>Eliminates all the transitional points in the rod blank, providing smoother actions, increased strength and greater sensitivity. IPC® Blanks have a more uniform wall thickness from Tip to Butt.</p>		 <p>Advanced Reinforcing Technology™ (ART™)</p>  <p>ART® Layers ART® Layers</p> <p>Exotic Carbon Fiber material prevents ovaling and adds 10X strength without increasing blank diameter or weight. ART® significantly improves the hoop strength of the blank, preventing it from deforming under load.</p>
---	--	--

 <p>TAPER ENHANCEMENT TECHNOLOGY</p> <p>Precision cut, curved blank patterns create rods with better actions and improved sensitivity</p>	 <p>FORTIFIED RESIN SYSTEM</p> <p>Advanced super-resin and blank curing system prevents micro buckling by keeping the fibres in proper alignment, providing a 33% increase in strength vs std. resins.</p>	 <p>VEIL TECHNOLOGY</p> <p>A tri-bread blend of Carbon Fibre, Fibreglass, and explicit resins combined to exponentially reduce the effects of exterior impacts on the blank integrities.</p>	 <p>XS SYSTEM</p> <p>The XS System repels water and dirt of the rod grips like never seen before. Ergonomic grips that have an amazing feel and comfort.</p>
 <p>100% AMERICAN MADE</p> <p>Made to the highest standards since 1946 in Park Falls, Wisconsin, U.S.A. Our mission is to build THE BEST RODS ON EARTH®</p>	 <p>HANDCRAFTED BY ST.CROIX</p> <p>Made to the highest standards in our state of the art factory in Fresnillo, Mexico. Overseen directly by St.Croix staff. THE BEST RODS ON EARTH®</p>	 <p>15 YEAR WARRANTY</p> <p>The Gold Standard in Rod Warranties. We value our Customers and seek to reward that trust by providing the best support in the industry</p>	 <p>5 YEAR WARRANTY</p> <p>The Silver Standard in Rod Warranties. We value our Customers and seek to reward that trust by providing the best support in the industry</p>

LEGEND® XTREME SERIES



BLANK

PRIMARY MATERIAL
SCV CARBON FIBER

GUIDES

PRIMARY RING MATERIAL
SILICONE NITRIDE
PRIMARY FRAME MATERIAL
GUNSMOKE TITANIUM

REEL SEAT

PRIMARY MATERIAL
NYLON
PRIMARY NUT MATERIAL
CARBON FIBER
SECONDARY NUT MATERIAL
ALUMINUM

HANDLE

PRIMARY MATERIAL
ST.CROIX PROPRIETARY MATERIAL
SECONDARY MATERIAL
XS®
ACCENT MATERIAL
ALUMINUM
BUTT CAP
RUBBER

MODEL	STYLE	TECHNIQUE	LENGTH	ACTION	POWER	LINE CLASS	LURE WEIGHT	PCS.
IXFS610MLXF	SPINNING	HARD BODY / PLASTIC	6'10"	X-FAST	ML	6 - 10lb	1/8 - 1/2 oz	1
IXFS70MF	SPINNING	HARD BODY / BLADES	7'	FAST	M	6 - 12lb	3/16 - 5/8 oz	1
IXFC68MXF	BAITCAST	PLASTICS / LURES	6'8"	X-FAST	M	8 - 14lb	1/4 - 5/8 oz	1
IXFC70MF	BAITCAST	SPINNERBAITS	7'	FAST	M	10 - 17lb	1/4 - 5/8 oz	1

LEGEND ELITE® PANFISH SERIES



BLANK

PRIMARY MATERIAL
SCV CARBON FIBER

GUIDES

PRIMARY RING MATERIAL
SILICONE CARBIDE
PRIMARY FRAME MATERIAL
TITANIUM

REEL SEAT

PRIMARY MATERIAL
NYLON
PRIMARY NUT MATERIAL
NYLON

HANDLE

PRIMARY MATERIAL
SUPER GRADE CORK
SECONDARY MATERIAL
CARBON FIBER
BUTT CAP
PREMIUM EVA

MODEL	STYLE	TECHNIQUE	LENGTH	ACTION	POWER	LINE CLASS	LURE WEIGHT	PCS.
LEP69LF	SPINNING	LURES / PLASTICS	6'9"	FAST	L	4 - 8lb	1/16 - 1/4 oz	1
LEP70LXF	SPINNING	FINESSE LURES	7'	X-FAST	L	2 - 6lb	1/16 - 3/16 oz	1

LEGEND TOURNAMENT® BASS SERIES



BLANK

PRIMARY MATERIAL
SCV CARBON FIBER
SECONDARY MATERIAL
IAC T GLASS®

GUIDES

PRIMARY RING MATERIAL
ALCONITE
PRIMARY FRAME MATERIAL
STAINLESS STEEL

REEL SEAT

PRIMARY MATERIAL
NYLON
PRIMARY NUT MATERIAL
ALUMINUM
SECONDARY NUT MATERIAL
STAINLESS STEEL

HANDLE

PRIMARY MATERIAL
SUPER GRADE CORK
SECONDARY MATERIAL
CORK COMPOSITE
ACCENT MATERIAL
CORK COMPOSITE
BUTT CAP
CORK COMPOSITE

MODEL	STYLE	TECHNIQUE	LENGTH	ACTION	POWER	LINE CLASS	LURE WEIGHT	PCS.
LBCT710XHF	BAITCAST	MED SWIMBAIT	7'10"	FAST	XH	14 - 80lb	2 - 5 oz	1
LBCT86XXHFT	BAITCAST	MAG SWIMBAIT	8'6"	FAST	XXH	14 - 80lb	4 - 8 oz	1

AVID SERIES® PANFISH



BLANK

PRIMARY MATERIAL
SCIII+ CARBON FIBER

GUIDES

PRIMARY RING MATERIAL
STAINLESS STEEL
PRIMARY FRAME MATERIAL
STAINLESS STEEL

REEL SEAT

PRIMARY MATERIAL
NYLON
PRIMARY NUT MATERIAL
NYLON
SECONDARY NUT MATERIAL
PREMIUM EVA

HANDLE

PRIMARY MATERIAL
SUPER GRADE CORK
ACCENT MATERIAL
CORK COMPOSITE
BUTT CAP
CORK COMPOSITE

MODEL	STYLE	TECHNIQUE	LENGTH	ACTION	POWER	LINE CLASS	LURE WEIGHT	PCS.
ASPS69ULF	SPINNING	FINESSE PLASTIC	6'9"	FAST	UL	2 - 6lb	1/32 - 3/16 oz	1
ASPS69MLXF	SPINNING	HARD BODY / BLADES	6'9"	X-FAST	ML	4 - 12lb	1/8 - 1/2 oz	1
ASPS70LXF	SPINNING	HARD BODY / PLASTICS	7'	X-FAST	L	2 - 6lb	1/16 - 3/16 oz	1
ASPS73MLXF	SPINNING	FLATS	7'3"	X-FAST	ML	4 - 12lb	1/8 - 1/2oz	1

AVID SERIES® SPINNING



BLANK

PRIMARY MATERIAL
SCII CARBON FIBER

GUIDES

PRIMARY RING MATERIAL
ALCONITE
PRIMARY FRAME MATERIAL
STAINLESS STEEL

REEL SEAT

PRIMARY MATERIAL
CORK
PRIMARY NUT MATERIAL
NYLON
SECONDARY NUT MATERIAL
STAINLESS STEEL

HANDLE

PRIMARY MATERIAL
PREMIUM CORK
BUTT CAP
CORK COMPOSITE

MODEL	STYLE	TECHNIQUE	LENGTH	ACTION	POWER	LINE CLASS	LURE WEIGHT	PCS.
AVS56ULF2	SPINNING	FINESSE LURE / SPINNER	5'6"	FAST	UL	2 - 6lb	1/32 - 3/16 oz	2
AVS60ULF2	SPINNING	FINESSE LURE / SPINNER	6'	FAST	UL	2 - 6lb	1/32 - 3/16 oz	2
AVS66LF2	SPINNING	LURE / SPINNER	6'6"	FAST	L	4 - 8lb	3/16 - 1/6 oz	2
AVS70ULM2	SPINNING	LURE / SOFT PLASTIC	7'	M/FAST	ML	2 - 6lb	1/32 - 3/16 oz	2

TROUT SERIES SPINNING



BLANK

PRIMARY MATERIAL
SCII CARBON FIBER

GUIDES

PRIMARY RING MATERIAL
STAINLESS STEEL
PRIMARY FRAME MATERIAL
STAINLESS STEEL

REEL SEAT

PRIMARY MATERIAL
NYLON
PRIMARY NUT MATERIAL
NYLON
SECONDARY NUT MATERIAL
PREMIUM EVA

HANDLE

PRIMARY MATERIAL
NYLON
SECONDARY MATERIAL
PREMIUM EVA
BUTT CAP
PREMIUM EVA

MODEL	STYLE	TECHNIQUE	LENGTH	ACTION	POWER	LINE CLASS	LURE WEIGHT	PCS.
TFS510LF	SPINNING	FINESSE LURE / SPINNER	5'10"	FAST	L	4 - 10lb	1/16 - 3/16 oz	1
TFS64LF2	SPINNING	LURE / SPINNER	6'4"	FAST	L	4 - 8lb	1/16 - 1/4 oz	2

MOJO BASS SERIES



BLANK

PRIMARY MATERIAL
SCII CARBON FIBER

GUIDES

PRIMARY RING MATERIAL
ALUMINUM - OXIDE
PRIMARY FRAME MATERIAL
STAINLESS STEEL

REEL SEAT

PRIMARY MATERIAL
NYLON
PRIMARY NUT MATERIAL
NYLON

HANDLE

PRIMARY MATERIAL
PREMIUM CORK
BUTT CAP
PREMIUM EVA

MODEL	STYLE	TECHNIQUE	LENGTH	ACTION	POWER	LINE CLASS	LURE WEIGHT	PCS.
MJS610MLXF	SPINNING	DROPSHOT / FINESSE	6'10"	X-FAST	ML	6 - 10lb	1/8 - 1/2 oz	1
MJS71MF	SPINNING	PLASTICS	7'1"	FAST	M	6 - 12lb	3/16 - 5/8 oz	1
MJC68MF	BAITCAST	JERKBAIT	6'8"	FAST	M	10 - 17lb	1/4 - 5/8 oz	1
MJC68MHF	BAITCAST	JIG / PLASTIC	6'8"	FAST	MH	12 - 20lb	3/8 - 1 oz	1
MJC70MHMF	BAITCAST	SPINNERBAIT	7'	M-FAST	MH	12 - 20lb	3/8 - 3/4 oz	1
MJC70HF	BAITCAST	STRUCTURE	7'	FAST	H	14 - 25lb	1/8 - 1 1/2 oz	1

BASS X SERIES



BLANK

PRIMARY MATERIAL
SCII CARBON FIBER

GUIDES

PRIMARY RING MATERIAL
STAINLESS STEEL
SECONDARY RING MATERIAL
ALUMINUM OXIDE
PRIMARY FRAME MATERIAL
STAINLESS STEEL
SECONDARY FRAME MATERIAL
STAINLESS STEEL

REEL SEAT

PRIMARY MATERIAL
NYLON
PRIMARY NUT MATERIAL
NYLON
SECONDARY NUT MATERIAL
PREMIUM EVA

HANDLE

PRIMARY MATERIAL
PREMIUM CORK
SECONDARY MATERIAL
PREMIUM EVA
BUTT CAP
CORK COMPOSITE

MODEL	STYLE	TECHNIQUE	LENGTH	ACTION	POWER	LINE CLASS	LURE WEIGHT	PCS.
BAS610MLXF	SPINNING	DROPSHOT / FINESSE	6'10"	X-FAST	ML	6 - 10lb	1/8 - 1/2 oz	1
BAC66MF	BAITCAST	JERKBAIT	6'6"	FAST	M	10 - 17lb	1/4 - 5/8 oz	1
BAC68MXF	BAITCAST	JIG / PLASTIC	6'8"	X-FAST	M	6 - 14lb	1/4 - 5/8 oz	1
BAC71MHF	BAITCAST	SPINNERBAIT	7'1"	FAST	M	12 - 20lb	3/8 - 1 oz	1

TRAVEL PACK SERIES

TROUT SERIES

Triumph



BLANK

PRIMARY MATERIAL
SCII CARBON FIBER

GUIDES

(TROUT) PRIMARY RING MATERIAL
STAINLESS STEEL
(TROUT) PRIMARY FRAME MATERIAL
STAINLESS STEEL
(TRIUMPH) PRIMARY RING MATERIAL
ALUMINUM OXIDE
(TRIUMPH) PRIMARY FRAME MATERIAL
STAINLESS STEEL

REEL SEAT

(TROUT) PRIMARY MATERIAL
NYLON
(TROUT) PRIMARY NUT MATERIAL
NYLON
(TRIUMPH) PRIMARY MATERIAL
NYLON
(TRIUMPH) PRIMARY NUT MATERIAL
NYLON

HANDLE

(TROUT) PRIMARY MATERIAL
NYLON
(TROUT) SECONDARY MATERIAL
PREMIUM EVA
(TRIUMPH) PRIMARY MATERIAL
PREMIUM CORK
(TRIUMPH) BUTT CAP
CORK COMPOSITE

MODEL	STYLE	TECHNIQUE	LENGTH	ACTION	POWER	LINE CLASS	LURE WEIGHT	PCS.
TROUT - TFS66MLXF3	SPINNING	LURES	6'6"	X-FAST	ML	4 - 10lb	1/16 - 3/8 oz	3
TRIUMPH - TSR56ULF4	SPINNING	FINESSE LURE	5'6"	FAST	UL	2 - 6lb	1/32 - 3/16 oz	4

IMPERIAL® USA FLY SERIES



All Imperial® USA Fly Rods come with a 1000 Denier Nylon Covered Rod Case.



BLANK

PRIMARY MATERIAL
SCIV CARBON FIBER
SECONDARY MATERIAL
SCII CARBON FIBER

GUIDES

PRIMARY RING MATERIAL
ALUMINUM OXIDE
PRIMARY FRAME MATERIAL
STAINLESS STEEL

REEL SEAT

PRIMARY MATERIAL
ALUMINUM
PRIMARY NUT MATERIAL
ALUMINUM

HANDLE

PRIMARY MATERIAL
SUPER GRADE CORK
SECONDARY MATERIAL
ALUMINUM
BUTT CAP (SELECTED MODELS)
PREMIUM EVA

MODEL	LENGTH	LINE WEIGHT	ACTION	PCS.
IU905 - 2	9'	5 WEIGHT	FAST	2
IU906 - 2	9'	6 WEIGHT	FAST	2



MOJO TROUT FLY SERIES



BLANK

PRIMARY MATERIAL
SCIII CARBON FIBER

GUIDES

PRIMARY RING MATERIAL
ALUMINUM - OXIDE
PRIMARY FRAME MATERIAL
STAINLESS STEEL

REEL SEAT

PRIMARY MATERIAL
ALUMINUM
PRIMARY NUT MATERIAL
ALUMINUM

HANDLE

PRIMARY MATERIAL
SUPER GRADE CORK
SECONDARY MATERIAL
ALUMINUM

MODEL	LENGTH	LINE WEIGHT	ACTION	PCS.
MT793 - 4	7'9"	3 WEIGHT	M/FAST	4
MT864 - 4	8'6"	4 WEIGHT	M/FAST	4
MT905 - 4	9'	5 WEIGHT	M/FAST	4
MT906 - 4	9'	6 WEIGHT	M/FAST	4



IMPERIAL® SALT FLY SERIES



All Imperial® Salt Fly Rods come with a 1000 Denier Nylon Covered Rod Case.



BLANK

PRIMARY MATERIAL
SCII CARBON FIBER

GUIDES

PRIMARY RING MATERIAL
ZIRCONIA
PRIMARY FRAME MATERIAL
STAINLESS STEEL

REEL SEAT

PRIMARY MATERIAL
ALUMINUM
PRIMARY NUT MATERIAL
ALUMINUM

HANDLE

PRIMARY MATERIAL
SUPER GRADE CORK
SECONDARY MATERIAL
ALUMINUM
BUTT CAP
PREMIUM EVA

MODEL	LENGTH	LINE WEIGHT	ACTION	PCS.
IU908 - 4	9'	8 WEIGHT	FAST	4
IU909 - 4	9'	9 WEIGHT	FAST	4

LEGEND® SURF SERIES



BLANK

PRIMARY MATERIAL
SCV CARBON FIBER

GUIDES

PRIMARY RING MATERIAL
TITANIUM
PRIMARY FRAME MATERIAL
SILICONE CARBIDE

REEL SEAT

PRIMARY MATERIAL
NYLON
PRIMARY NUT MATERIAL
NYLON
SECONDARY NUT MATERIAL
STAINLESS STEEL

HANDLE

PRIMARY MATERIAL
NEOPRENE OVERLAY
SECONDARY MATERIAL
NYLON
BUTT CAP
RUBBER

MODEL	STYLE	TECHNIQUE	LENGTH	ACTION	POWER	LINE CLASS	LURE WEIGHT	PCS.
GSS100MMF2	SPINNING	LURES / POPPERS	10'	M-FAST	MH	10 - 20lb	1 - 4 oz	2
GSS120MHMF2	SPINNING	HEAVY BAIT	12'	M-FAST	MH	15 - 40lb	3 - 8 oz	2

SEAGE™ SURF SERIES



BLANK

PRIMARY MATERIAL
SCII CARBON FIBER

GUIDES

PRIMARY RING MATERIAL
STAINLESS STEEL
PRIMARY FRAME MATERIAL
ALUMINUM OXIDE

REEL SEAT

PRIMARY MATERIAL
NYLON
PRIMARY NUT MATERIAL
NYLON
SECONDARY NUT MATERIAL
STAINLESS STEEL

HANDLE

PRIMARY MATERIAL
X-FLOCK OVERLAY
SECONDARY MATERIAL
ADVANCED POLYMER
ACCENT MATERIAL
PREMIUM EVA
BUTT CAP
CORK COMPOSITE

MODEL	STYLE	TECHNIQUE	LENGTH	ACTION	POWER	LINE CLASS	LURE WEIGHT	PCS.
SES90MLMF2	SPINNING	LURES / SPINNING	9'	M-FAST	ML	15 - 40lb	3/8 - 1.5 oz	2
SES106MM2	SPINNING	HEAVY LURE / BAIT	10'6"	MOD	M	20 - 50lb	1 - 4 oz	2

LEGEND® TOURNAMENT INSHORE SERIES



BLANK

PRIMARY MATERIAL
SCIV+ CARBON FIBER

GUIDES

PRIMARY RING MATERIAL
ALCONITE
PRIMARY FRAME MATERIAL
STAINLESS STEEL

REEL SEAT

PRIMARY MATERIAL
NYLON
PRIMARY NUT MATERIAL
NYLON
SECONDARY NUT MATERIAL
ALUMINUM

HANDLE

PRIMARY MATERIAL
SUPER GRADE CORK
SECONDARY MATERIAL
CORK COMPOSITE
ACCENT MATERIAL
CORK COMPOSITE
BUTT CAP
RUBBER

MODEL	STYLE	TECHNIQUE	LENGTH	ACTION	POWER	LINE CLASS	LURE WEIGHT	PCS.
ITLS70MHF	SPINNING	METALS / MED LURES	7'	FAST	MH	10 - 20lb	1/2 - 1¼ oz	1
ITLS70HMF	SPINNING	METALS / MED STICKBAIT	7'	M-FAST	M	17 - 40lb	5/8 - 1½ oz	1
ITLS73MHF	SPINNING	METALS / LURES / BAIT	7'3"	FAST	MH	10 - 20lb	1/2 - 1¼ oz	1
ITLS79XHMF	SPINNING	HEAVY LURE / POPPERS	7'9"	M/FAST	XH	40 - 80lb	2 - 6 oz	1

RIFT SALT SERIES



BLANK

PRIMARY MATERIAL
SCIII CARBON FIBER

GUIDES

PRIMARY RING MATERIAL
ALCONITE
PRIMARY FRAME MATERIAL
STAINLESS STEEL

REEL SEAT

PRIMARY MATERIAL
NYLON
PRIMARY NUT MATERIAL
NYLON
SECONDARY NUT MATERIAL
STAINLESS STEEL

HANDLE

PRIMARY MATERIAL
PREMIUM EVA
ACCENT MATERIAL
NYLON
BUTT CAP
NON MARKING RUBBER GIMBAL

MODEL	STYLE	TECHNIQUE	LENGTH	ACTION	POWER	LINE CLASS	PCS.
RIFSS70MF	SPINNING	METALS / MED LURES / BAIT	7'	FAST	M	15 - 40lb	1
RIFSS70MHF	SPINNING	MED STICKBAITS / POPPERS	7'	FAST	MH	30 - 65lb	1
RIFSS73MLMF	SPINNING	METALS / MED LURE / BAIT	7'3"	M/FAST	ML	10 - 30lb	1
RIFSS710HMF	SPINNING	HEAVY STICKBAITS / POPPERS	7'10"	M/FAST	H	40 - 120lb	1

Jig Star evolved after its founder Chris Wong in New Zealand had spent many years Jigging with some of the World's most renowned Big Fish anglers from Japan, USA, Taiwan, SE Asia, South Africa and New Zealand.

Hundreds of hours were spent testing products to the absolute 'MAX'!

Impeccable in Design, Jig Star rods are the perfect blend of Toray® High Performance Graphite (Japan) with other high quality Resins, to produce a High Class, Advanced Jigging Rod.

Particular attention has been made to the stealthy aesthetics and minimalistic build, resulting in a light yet extremely powerful fishing rod.

Strict attention is paid to rod lengths, butt lengths, componentry used and Graphite Resins required.

Distinctively Better all Jig Star Rods come with an Embroidered Rod Bag.

BATTLE ROYALE RODS



The Battle Royale is our 5'2" flagship model featuring Fuji® PLS/PSS Reel Seats, Fuji®MNSG/KLSG Guides and custom componentry to create a stealthy modern classic with eye popping Chameleon paintwork and custom cosmetics. The high quality Toray® Graphite blank also features Nano technology which effectively improves blank strength and resilience. As the name suggests - here is your weapon of choice when taking on reef thugs or deep water doozers. The Battle Royale is very competitively priced and comparable to the very best rods on the International market.



Fuji® MNSG Guides (Overheads)
Fuji® KLSG Guides (Threadlines)



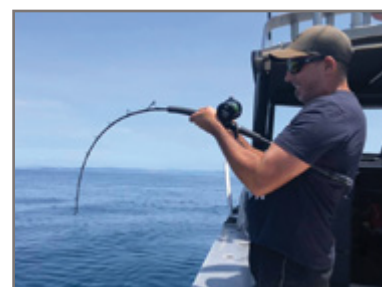
Fuji® PLS Reel Seat (Overheads)
Fuji® PSS Reel Seat (Threadlines)



Fuji® PLS Reel Seat (Overheads)
Fuji® DPS Reel Seat (Threadlines)



Fuji® MNSG Guides (Overheads)
Fuji® KWSG Guides (Threadlines)



MODEL	STYLE	LENGTH	PE RATING	JIG RANGE	PIECES
BATTLE ROYALE ML	SPIN	5'2"	PE 3 - 6	150 - 400 grams	1
BATTLE ROYALE MH	SPIN	5'2"	PE 4 - 8	200 - 500 grams	1
BATTLE ROYALE ML	OVERHEAD	5'2"	PE 3 - 6	150 - 400 grams	1
BATTLE ROYALE MH	OVERHEAD	5'2"	PE 4 - 8	200 - 500 grams	1

PHANTOM RODS



The Phantom is a 5'7" rod with great butt power and a light, fast tip. The requirements for the Phantom was to develop an exceptional rod for jigging for Dogtooth Tuna as well as a rod to double down as an outstanding live or dead bait rod for many species. The tip not only works lighter jigs but transmits those pre-bite panic vibrations from live baits early enough to prepare the angler for the impending chaos. The longer rod length allows easier maneuvering around duckboards or outboard obstacles. The Phantom has been 3 years in the making. It has involved hardcore Dogtooth Tuna sessions as well as multiple trips to the 3 Kings with different jiggers until we were happy with it's design.

The blank uses High Performance Graphite from Toray® of Japan with advanced Nano technology. The Phantom rod features our standard specifications including Fuji® PSS/DPS Reel Seats with the latest Fuji® K Frame SIC Guides and custom componentry. The Overhead model also features the innovative "ACID" or "SPIRAL" design.

MODEL	STYLE	LENGTH	PE RATING	JIG RANGE	PIECES
PHANTOM SPIN	SPIN	5'7"	PE 4 - 8	150 - 500 grams	1
PHANTOM OVERHEAD	ACID WRAP	5'7"	PE 4 - 8	150 - 500 grams	1

TWISTED SISTA RODS

NINJA RODS



The Twisted Sista rod is an innovative "ACID" or "SPIRAL" design which draws on the inherent advantages of both Overhead and Spin rods.

The design alleviates damaging blank twist associated with poorly built Overhead rods and allows the blank to develop its maximum power potential and design characteristics. These rods have remarkable power and resilience as a result of its carefully tapered Nano blank with a perfect acid guide flow. Bend the Twisted Sista to its Max and all will become evident.

This rod uses Fuji® PLS palming reel seats with Fuji® KWAG & LC Guides. The MK-II rod has been redesigned with slightly more butt power and finished in an eye popping Chameleon Brown/Red paint with custom artwork and detail.

The grips have changed to short but chunky grooved EVA for a greater, more comfortable grip.

A feature of all Jig Star rods is the lack of binding between the guide feet. This reduces "Dead Spots" caused by excessive binding along the Blank freeing the Blank to extoll all its characteristics virtues and power.

The blank uses High Performance Graphite from Toray® of Japan with advanced Nano technology. The increased length offers a longer butt length and longer reach than before yet still saves weight making Jig Star rods easy to fish all day, every day.

The Ninja Overhead rod features our standard specifications including Fuji® PSS/PLS Reel Seats with the latest ALPS® SSMNZG Guides whilst the Threadline features Fuji® K Frame Alconite Guides and custom componentry.

To avoid "Dead Spots" caused by excessive binding, all Jig Star rods are bound on the Guide feet and nothing between. This feature maintains the Blanks natural curve and sensitivity.

All Jig Star rods are complete with a distinctively embroidered rod bag.



The Twisted Sista rods feature an innovative "ACID" or "SPIRAL" design which draws on the inherent advantages of both Overhead and Spin rods.

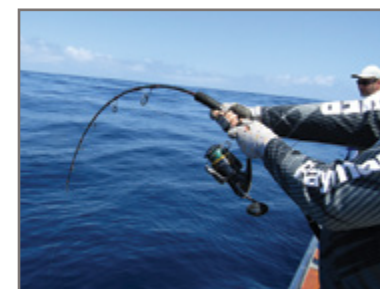
The Twisted Sista rods feature Fuji® KWAG & LC Guides



Fuji® PSS Reel Seat (Threadlines)
Fuji® PLS Reel Seat (Overheads)



Fuji® K Frame Alconite Guide (Threadlines)
ALPS® SSMNZG Guides (Overheads)



MODEL	STYLE	LENGTH	PE RATING	JIG RANGE	PIECES
TWISTED SISTA L	OVERHEAD	5'	PE 2 - 5	100 - 300 grams	1
TWISTED SISTA ML	OVERHEAD	5'	PE 3 - 6	150 - 400 grams	1
TWISTED SISTA MH	OVERHEAD	5'	PE 4 - 8	200 - 500 grams	1

MODEL	STYLE	LENGTH	PE RATING	JIG RANGE	PIECES
NINJA UL	SPIN	5'5"	PE 1.5 - 3	60 - 200 grams	1
NINJA L	SPIN	5'2"	PE 2 - 5	100 - 300 grams	1
NINJA ML	SPIN	5'2"	PE 3 - 6	150 - 400 grams	1
NINJA MH	SPIN	5'2"	PE 4 - 8	200 - 500 grams	1
NINJA UL	OVERHEAD	5'5"	PE 1.5 - 3	60 - 200 grams	1
NINJA L	OVERHEAD	5'2"	PE 2 - 5	100 - 300 grams	1
NINJA ML	OVERHEAD	5'2"	PE 3 - 6	150 - 400 grams	1
NINJA MH	OVERHEAD	5'2"	PE 4 - 8	200 - 500 grams	1

SLOW JERK RODS



SLOW PITCH jigging is one of the newest and fastest growing lure fishing methods to hit these shores.

Micro Jigging is using Jigs that flutter and slide, using lighter braids requiring ultra light jigging rods to suit more finesse forms of fishing. Slow Jerks have more butt strength as models increase to heavier versions. The Slow Jerk Rods are also suited to Snapper and Bottom/Reef fishing.

The Slow Jerk rods feature high quality Toray® Graphite Blanks, Fuji® TCS Reel Seats, Fuji® 'K' Frame Alconite Guides and custom componentry.

The 1pce models feature a traditional guide train and are Blue in colour.

The 2pce models all feature the "ACID" or "SPIRAL" wrap design and are RED in colour.

All Jig Star rods are complete with a distinctively embroidered rod bag.



Fuji® 'K' Frame Alconite Guides



Fuji® TCS Reel Seat



MODEL	STYLE	LENGTH	PE RATING	JIG RANGE	PIECES
SLOW JERK 603 - 2	OVERHEAD	6'3"	PE 0.8 - 1.5	Max 120 grams	1
SLOW JERK 603 - 2A	ACID WRAP	6'3"	PE 0.8 - 1.5	Max 120 grams	2
SLOW JERK 603 - 3	OVERHEAD	6'3"	PE 1 - 2	Max 150 grams	1
SLOW JERK 603 - 3A	ACID WRAP	6'3"	PE 1 - 2	Max 150 grams	2
SLOW JERK 603 - 4	OVERHEAD	6'3"	PE 1.5 - 3	Max 200 grams	1
SLOW JERK 603 - 4A	ACID WRAP	6'3"	PE 1.5 - 3	Max 200 grams	2
SLOW JERK 603 - 6	OVERHEAD	6'3"	PE 5	Max 600 grams	1
SLOW JERK 603 - 6A	ACID WRAP	6'3"	PE 5	Max 600 grams	2

TAI KABURA RODS



Snapper are one of the most keenly sought-after fish throughout Australasia and anglers are adapting new methods to catch these quality table fish.

The latest Japanese technique to target Snapper is with the use of sliding Kabura jigs that are fished similar to Inchiku jigs. The Tai Kabura rod is designed to fish mainly Kabura but will equally handle Inchiku, Micro and Slow Pitch jigs.

The blank uses a new revolutionary graphite material called GRAPHENE.

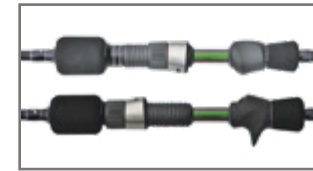
This results in a much lighter, stronger and more responsive fishing rod.

The Tai Kabura rods feature an exposed Fuji® SK reel seat that allows for better bite detection and feel.

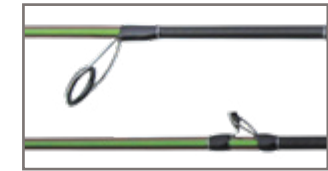
It also features Fuji® 'K' Frame Alconite guides with minimal thread not to take away from the natural action of the rod.

The Tai Kabura Overhead model features the innovative "ACID" or "SPIRAL" design which draws on the inherent advantages of both Overhead and Spin rods. These rods are very versatile and can also be used for fishing Soft Plastics.

All Jig Star rods are complete with a distinctively embroidered rod bag.



Fuji® SK Reel Seat



Fuji® 'K' Frame Alconite Guides



MODEL	STYLE	LENGTH	PE RATING	JIG RANGE	PIECES
TAI KABURA SPIN	SPIN	6'3"	PE 1 - 2	Max 150 grams	2
TAI KABURA OVERHEAD	ACID WRAP	6'3"	PE 1 - 2	Max 150 grams	2

SPLIT RING PLIERS



MICRO SPLIT RING PLIERS

Designed for X-Sml Rings
Stainless Steel
Features Braid Cutter & Stay closed Clasp



MINI SPLIT RING PLIERS

Designed for Sml to Med Rings
Stainless Steel
Features Braid Cutter & Stay closed Clasp



LARGE SPLIT RING PLIERS

Designed for Rings Size 7 to 11
Polished Stainless Steel
Features Lanyard with pocket pouch and Belt Clip

GAME SWIVELS



Black Stainless Steel
355lb Breaking Strain
3pcs per packet

2 RING & GROMMET



Black Stainless Steel
Eliminates Busted Leader Knots
Allows greater freedom of movement in the Jig
5pcs per packet
Standard or Micro

SWIVEL & GROMMET



Black Stainless Steel
355lb Breaking Strain Swivel
Eliminates Bust Offs
Helps alleviate unwanted line twist
Allows greater freedom of movement in the Jig
2pcs per packet
Standard or Micro

PR KNOT BOBBINS



PR Bobbins are available in **Red, Blue or Silver**
Anodized finish.
Each PR Bobbin is complete with a drawstring bag, printed instructions and illustrations on the PR knot.

BRAID SCISSORS



Jigstar Braid Scissors are designed to make short work of Multi Strand Braid, Monofilament and Fluorocarbon. Made from polished Stainless Steel and featuring Serrated Blades with Ergonomic Comfort Grip Handles.

KNOT SLEEVE



Jig Star Knot Sleeve is used to protect leader knots from being cut against Solid Rings or other tie points. Sleeve can accept over 200lb leader

KEVLAR CORD



Japanese YGK, 4mt Length
Available in **Red**
Sizes: **XS (70lb) S(100lb) M(240lb) H(300lb)**

METAL CORE

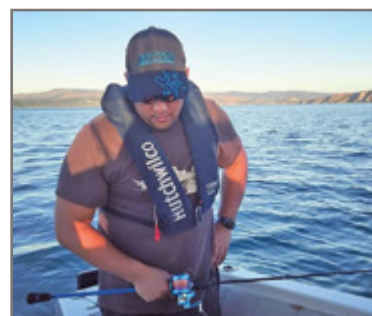


3mt Length Stainless Core, Multi Strand Woven Outer
Bite Proof Tie for Assist Hooks
Available in **Chartreuse or Pink**
Sizes: **50lb, 100lb, 150lb or 200lb**

WRAP AROUNDS



Protects split butts from nasty rod holder damage
Easy to apply, Light weight
3 sizes in each pack - 8, 10, 12mm diameter, 300mm long.
Colour code your rods
Available in **Black, Blue or Red**



RIGGING NEEDLES



GAME KIT	HOLLOW KIT	PRO KIT	HOLLOW NEEDLES
In PVC Tube	In PVC Tube	In PVC Tube	Single - In PVC Tube
Comes with:	Comes with:	Comes with:	Available in : 20lb, 30lb, 40lb, 50lb, 60lb, 80lb, 100lb, 130lb, 150lb, 200lb & 300lb
HOLLOW NEEDLES	HOLLOW NEEDLES	HOLLOW NEEDLES	LOOP NEEDLES
50lb	20lb 30lb	20lb 30lb 40lb	Single - In PVC Tube
60lb	40lb 50lb	50lb 60lb 80lb	Available in : Sml, Med & Lge
80lb	60lb 80lb	100lb 130lb 150lb	LATCH NEEDLES
130lb	100lb 130lb	200lb	Single - In PVC Tube
LATCH NEEDLE - Med	150lb 200lb	LATCH NEEDLE - Sml	Available in : Sml, Med & Lge
		LOOP NEEDLE - Sml	

FIGURE '8' RINGS



304 Stainless Steel (for Leader Separation)
Alternative to Solid Rings, High Strength

SIZE	DIA. (Internal)	RATING	PCS
S	3 / 5.5mm	300lb	16
M	7 / 7.5mm	300lb	14
L	8.5mm	300lb	12

SPLIT RINGS



304 Grade Stainless Steel, Smooth Round Edges

SIZE	DIA. (Internal)	RATING	PCS
XS	4.5mm	33lb	20
S	5.5mm	47lb	10
M	7mm	100lb	10
H	8.5mm	200lb	10
XH	9mm	270lb	10
XL	11mm	270lb	10

JIG GLOVES

Jig Star Fishing Gloves have been designed by Jigging and Top Water experts. These gloves feature fast drying synthetic microfibre materials which offer outstanding wear, comfort and protection. Special attention is paid in reinforcement to thumb, forefinger and palm areas.

Available in Sizes: **M, L, XL, XXL**
in **Blue/Black or Red/Black** colour



SOLID RINGS



304 Grade Stainless Steel, Smooth Round Edges.
Rings stamped instead of welded removing any points of weakness.

SIZE	DIA. (Internal)	RATING	PCS
XS	4mm	70lb	20
S	5.5mm	100lb	10
M	7.5mm	220lb	8
H	8.5mm	320lb	8

COMBO RING PACK



304 Grade Stainless Steel, Smooth Round Edges

SIZE	DIA. (Internal)	PCS
S	5.5mm	10
M	7mm / 7.5mm	10
L	8.5mm	10

5pcs each per packet
of Solid & Split Rings

JIG CARRYALL BAGS



17 Long Pockets for Max. 38cm Jigs
10 Short Pockets for Max. 21cm Jigs
2 Front Accessory Pockets
Marine Proof
Easy Jig Cleaning and Rinsing
Easy to carry Briefcase Style
Comes in Black/Blue Colour

(*Jigs & Accessories Not Included)



JIGSTAR CAPS



Waterproof, Adjustable Sizing
Sleeves to secure Sunglasses
Lanyard to secure Cap
Blue or Yellow

JIGSTAR SHIRT



Self Wicking, Cool Material
Quick Drying
Available in Sizes:
Med, Lge, X-Lge & XX-Lge

Since 1973 Strike Pro has built a huge following Worldwide on their ability to produce the highest quality lures available. Strike Pro's continual Research Development, and superior quality manufacturing have earned the brand an awesome reputation within the angling community. In the past 10 years or so, Strike Pro have grown immensely, covering a wide range of products to now include Reels, Rods, Hard Body Lures, Soft Plastics, Braids, and much more.

STRIKE MAX REELS



- Super Thin Aluminium Body Design
- Aluminium Side Covers
- Acrylite Fusion Drag System
- Waterproof Drag Seal
- Stainless Steel Main Gear
- Brass Pinion Gear
- Stainless Steel Core & Thread Locking Mechanisms
- 9 Corrosion Resistant Bearings (CRB Bearings)
- Ultra Light Rotor
- Braid ready CNC Aluminium Spool
- Dynamic Bail Arm System
- One Way Instant Anti Reverse
- CNC Aluminium Handle
- Soft EVA Handle Knob

MODEL	GEAR RATIO	LINE CAPACITY	WEIGHT	MAX DRAG
SM 2000	5.4:1	255yd x 4lb	215gm	5.5kg
SM 3000	5.2:1	175yd x 6lb	270gm	6.5kg
SM 4000	5.2:1	175yd x 12lb	275gm	6.5kg
SM 6000	4.9:1	185yd x 20lb	380gm	7.5kg



Super Thin Aluminium Body design. Features Aluminium Side Covers.



CNC Aluminium Spool that is Braid ready. Dynamic Bail Arm System with Titanium plated roller.



Stainless Steel Main Gear, Core and Thread Locking Mechanisms. CNC Aluminium handle.



Acrylite Fusion Drag Washer System that creates a silky smooth and strong drag with Waterproof Drag Seal.

ULTRA STRIKE REELS



- Super Thin Body Design
- High Strength Graphite Body
- High Strength Graphite Sideplates
- Acrylite Fusion Drag System
- Braid ready CNC Aluminium Spool
- Stainless Steel Ball Bearings
- Ultra Light Rotor
- Dynamic Bail Arm System
- One Way Instant Anti Reverse
- CNC Aluminium Handle with Soft Handle Knob

MODEL	GEAR RATIO	LINE CAPACITY	WEIGHT	MAX DRAG
US 2000	5.4:1	220yd x 6lb	200gm	5.5kg
US 4000	5.2:1	170yd x 10lb	275gm	6.5kg
US 6000	4.9:1	200yd x 12lb	360gm	7.5kg

MOJOMAX



The Mojomax is built tough to handle any species and conditions. The Mojomax features an extra thick body with a heavy duty wire running through the entire length of the lure. It also comes fitted with extra heavy duty split rings and heavy duty VMC Permasteel trebles and offers an in-built rattle system. Ideal for Barramundi, Mackerel, Wahoo and offshore pelagic species.

14cm 58.4grams Floating Dives to approx. 12ft

CYBER BAIT



The Cyber Bait has a irresistible swaying action and features an Weight Transfer System & loud in built rattles. It is a super deep diver that is deadly on Barramundi, Mangrove Jacks, Flathead, Salmon, Tailor and large Trout.

8.5cm 9.8grams Floating Dives to approx. 12ft

FLATZ MINNOW



The Flatz Minnow is a larger shallow running minnow that weighs 4.3gm which helps getting distance over shallow flats on spooky fish. It has a slow rolling action and has proven deadly on Bream, Bass and Trout.

6.5cm 4.3grams Floating Dives to approx. 3ft

GALAXIA MINNOW



An extremely popular and effective deep diving baitfish profile lure, complete with sonic rattle and with an amazing swimming action. A lure with a proven track record on a wide range of species in Estuary and Freshwater. Suited to both casting and trolling.

6cm 7grams Floating Dives to approx. 12ft

BASS - X



A baitfish profile with deep diving action. Features in built rattles and Weight Transfer System. Designed for targeting fish holding deeper down. Ideal for Bass, Bream, Estuary Perch, Flathead and Trout.

5.5cm 4grams Floating Dives to approx. 6ft

CRASH SP



The Strike Pro Crash-SP is a superb super deep diving minnow of the highest quality. The Crash-SP crash dives to approx. 4mts and is outstanding when fishing deep drop offs, over the top of deep weed beds and when fishing cockle beds and pole bases in deep water where you may use a metal vibe lure. The Crash-SP **Suspends in Saltwater**, offers a **Weight Transfer System** for increased casting distance and it is effective on Bream, Estuary Perch, Flathead, Bass & Trout.

4.8cm 5.2grams Suspending Dives to approx. 12ft

SMELTA



A small minnow with a traditional floating action. A tight 'shimmy' action with in built rattles and Owner or Decoy treble hooks. Ideal for Trout, Bream and Bass.

5cm 2.4grams Floating Dives to approx. 3ft

PYGMY II



The Winning lure in the 2006 ABT Bream Grand Final. It features a irresistible slow swaying rolling action that fish find very appealing. A very popular lure for Bream and many other species in fresh and saltwater.

4cm 3grams Suspending Dives to approx. 5ft

BABY ARCHBACK



A fantastic mini baitfish profile that has a tight shimmy action. This little lure is the ideal lure for finesse situations in particular on estuary species like Bream and in freshwater on Trout.

3.5cm 2.2grams Suspending Dives to approx. 3ft

CYBER CRANK DD



The Cyber Crank DD has proven effective whether fishing flats, structure or weed beds. It dives deeper and Suspends in Saltwater, so it sits in the strike zone longer. This lure has been effective on Bream, Bass, Trout, Redfin and Yellowbelly.

3.7cm 5.2grams Suspending Dives to approx. 9ft

BASS BEETLE



A realistic ultra shallow running Beetle imitation. Perfect for when the Christmas Beetles and Cicadas appear. Deadly on Bass, Bream, Estuary Perch, Trout and Jungle Perch.

4cm 5.7grams Floating Dives to approx. 1ft

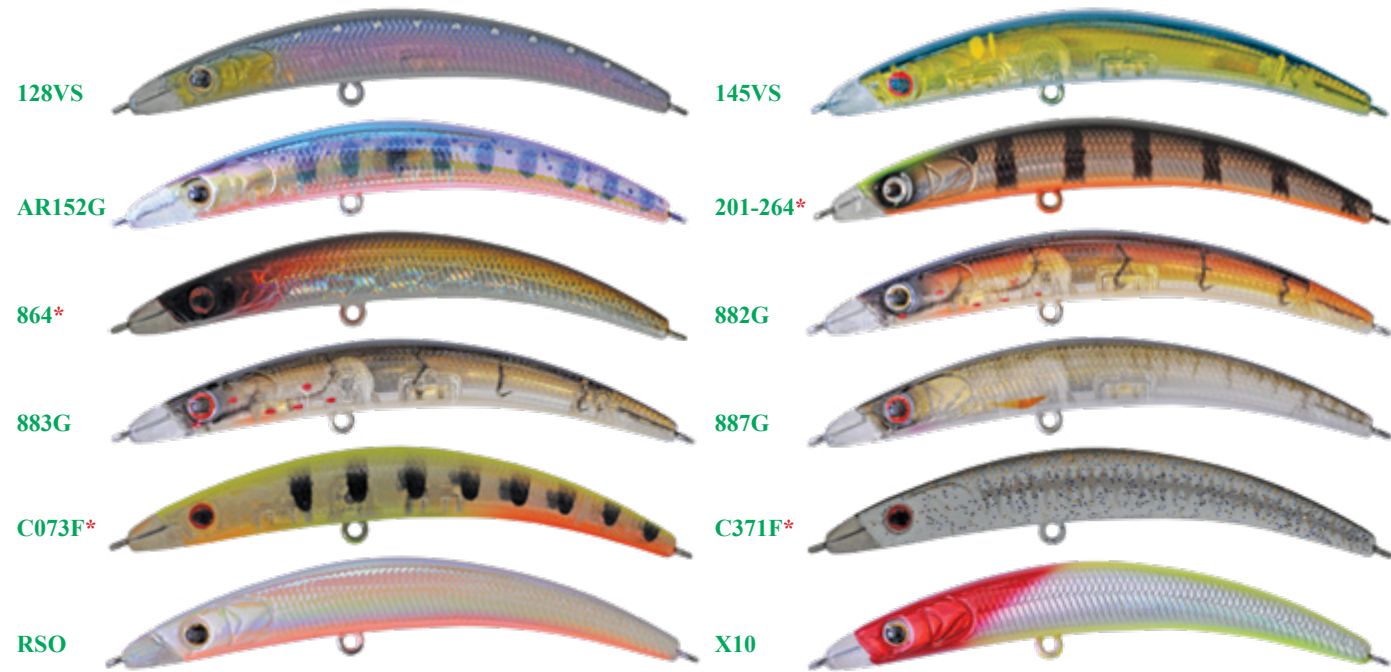
CANDY CRANK



The Candy Crank is a shallow running crankbait. This lure has a superb rolling action with a new thin bib design and material. This little lure is dynamite on Bream, Bass, Jungle Perch and Trout.

3.8cm 3.1grams Floating Dives to approx. 3ft

SLINKY MINNOW



A fantastic surface slide bait that darts and swims like an injured or fleeing Baitfish or Prawn. The Slinky Minnow floats at rest with its tail underwater at 45° and can be worked with an erratic swimming action, skip like a fleeing Garfish or Prawn or can also be worked like a more traditional diving minnow. They are deadly on Bream, Estuary Perch, Flathead, Mangrove Jacks, Bass & Trout.

8.5cm 6.3grams Surface Floating
7.5cm 4.6grams Surface Floating*

HOT DOG 65



A 65mm walk the dog style lure has a superb action & sits perfectly at rest. It is smaller and is thinner than its contemporaries so it imitates a Prawn perfectly and is a smaller bite size so it improves hook up rates. Deadly on species such as Bream, Bass, Estuary Perch and Trout.

6.5cm 4.2grams Surface Floating

RACK POPPER



This little popper has been designed especially for fishing over oyster racks. It features Fluted holes above the gills to create extra noise and bubble action. Deadly on Bream, Whiting, Bass & Estuary Perch.

5cm 3.9grams Surface Floating

SPRAT STICK



A lipless slow sinking stickbait that has a subtle flutter on the drop. It is ideal for targeting fish that are holding deeper down over weedbeds and in particular around pylons and boat hulls.

5cm 4.3grams Sinking Extra Slow Sinking

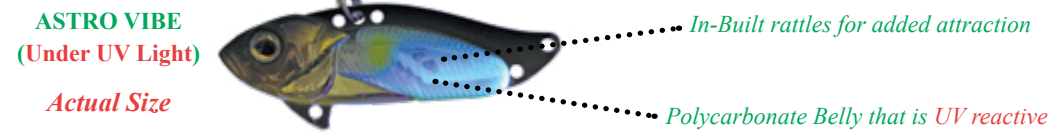
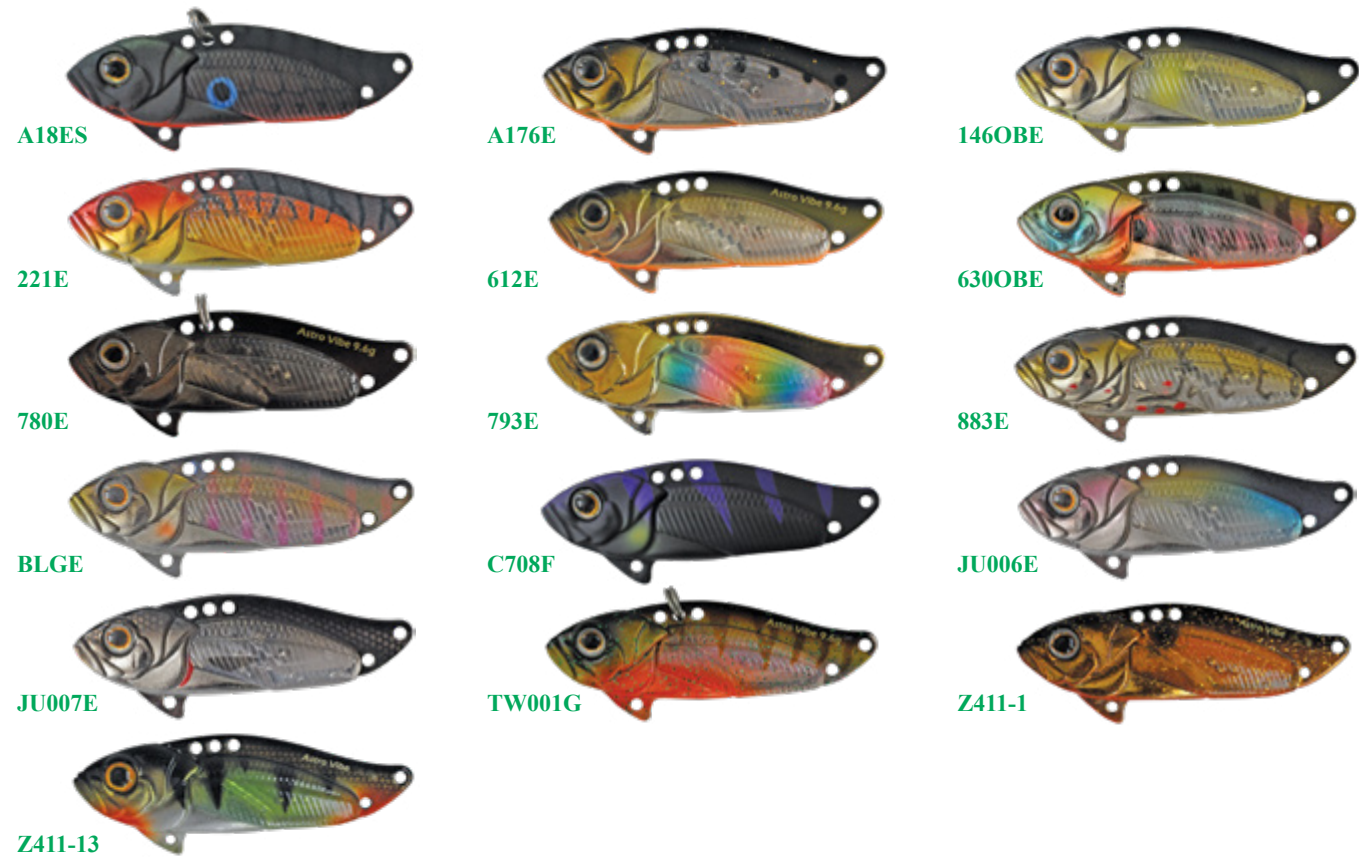
MICRO VIBE 25



A miniature vibe lure that has become a favourite amongst Bream anglers. Perfectly Weight Balanced shimmy action on drop and lift and sits head down, tail up on the bottom. Deadly on fish under Moored Boats, Pontoons, Jetties, Pylons and on fish that have shut down or become fickle.

2.5cm 1.9grams Slow Sinking

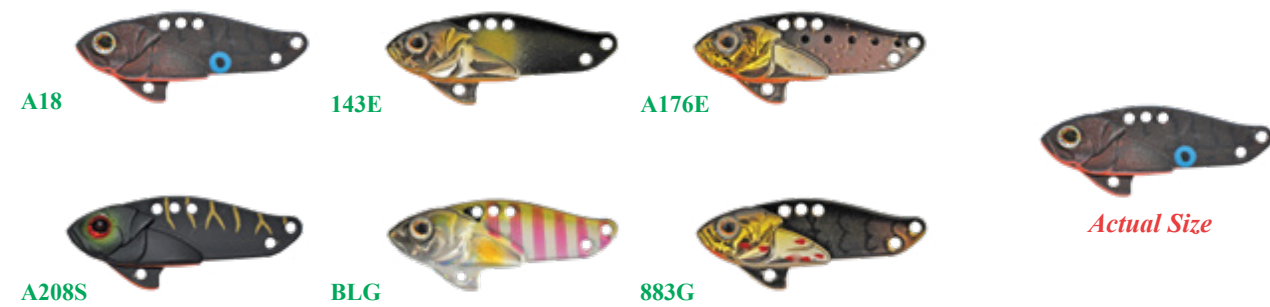
ASTRO VIBE 45



The Astro Vibe combines the best of both World's, a metal blade and a rattling vibe. The Astro Vibe incorporates a Polycarbonate Belly with small in built rattles. It also allows for a transparent finish to be achieved in a metal blade and the belly section is UV for added attraction. The Astro Vibe is deadly on Bream, Bass, Estuary Perch, Yellowbelly, Mulloway, Flathead and Redfin.

4.5cm 9.6grams Sinking

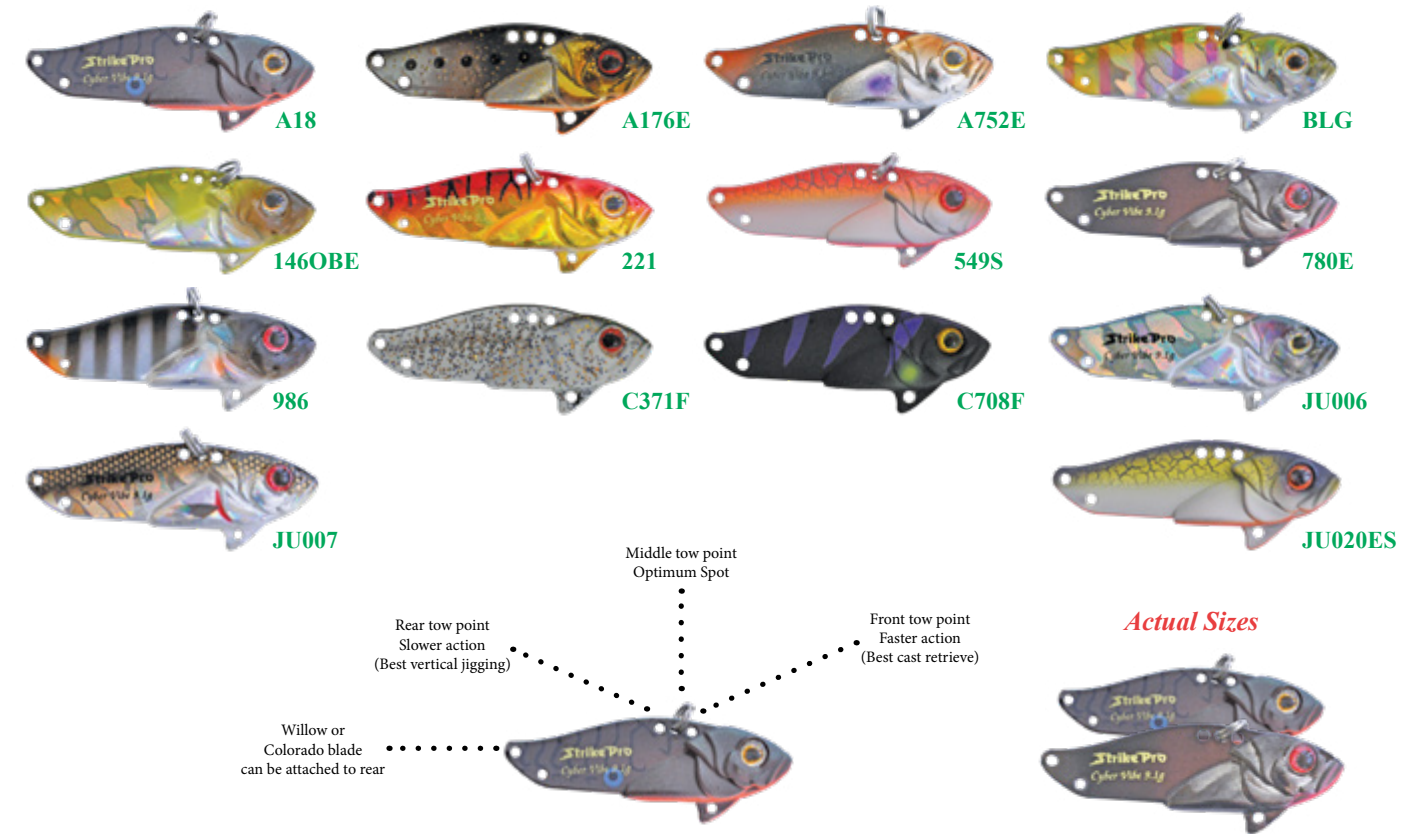
CYBER VIBE 30



A miniature finesse version of the highly popular Cyber Vibe. The 30 size is dynamite for fishing flats, cockle beds and pole bases. It features all the same benefits as it's bigger brothers and is Deadly on Bream, Bass, Estuary Perch and Redfin.

Cyber Vibe 30 3cm 3.5grams Sinking

CYBER VIBE 35 & 40



Developed by Strike Pro & the Juro Test Team, the Cyber Vibe has 3 tow points and 2 rear hook points, giving the lure up to 6 different actions! This gives the Cyber Vibe more diversity than its competitors. Deadly on Bream, Bass, Perch and Redfin.

Cyber Vibe 35 3.5cm 4.5grams Sinking
Cyber Vibe 40 4.0cm 6.6grams Sinking

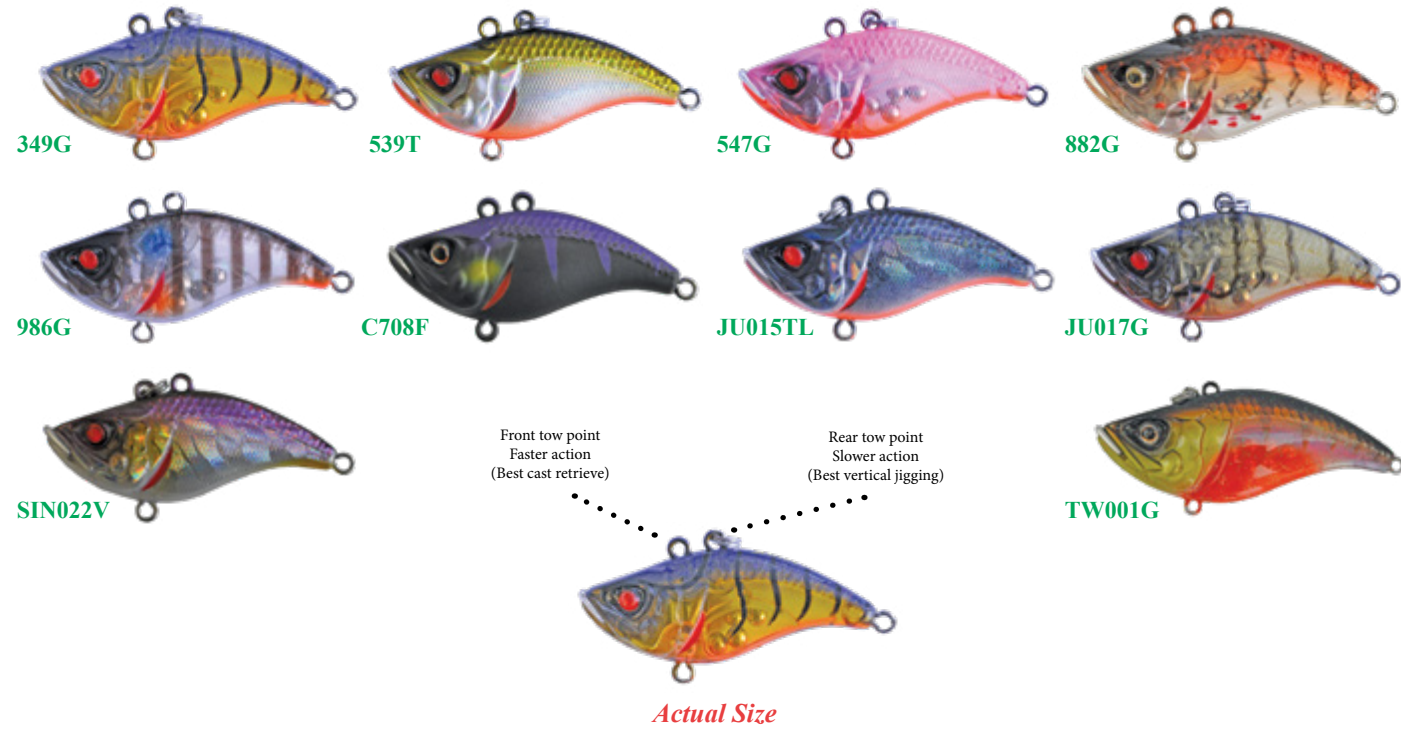
CYBER VIBE 65



A larger version of the popular Cyber Vibe. Due to the overwhelming demand for a Snapper-sized Vibe we have released this 6.5cm version that is deadly on Snapper, Barramundi and Murray Cod.

6.5cm 26grams Sinking

HUMMER 40



The Hummer is a plastic vibe that is perfectly weight balanced that allows the lure to rest on the bottom perfectly on its precise weighted chin. It has a fantastic action on the drop and lift. The Hummer also features two top tow points that allows the angler to impart different action on the lure. It is deadly on Bream, Bass, Estuary Perch, Flathead and Redfin.

4cm 6grams Sinking

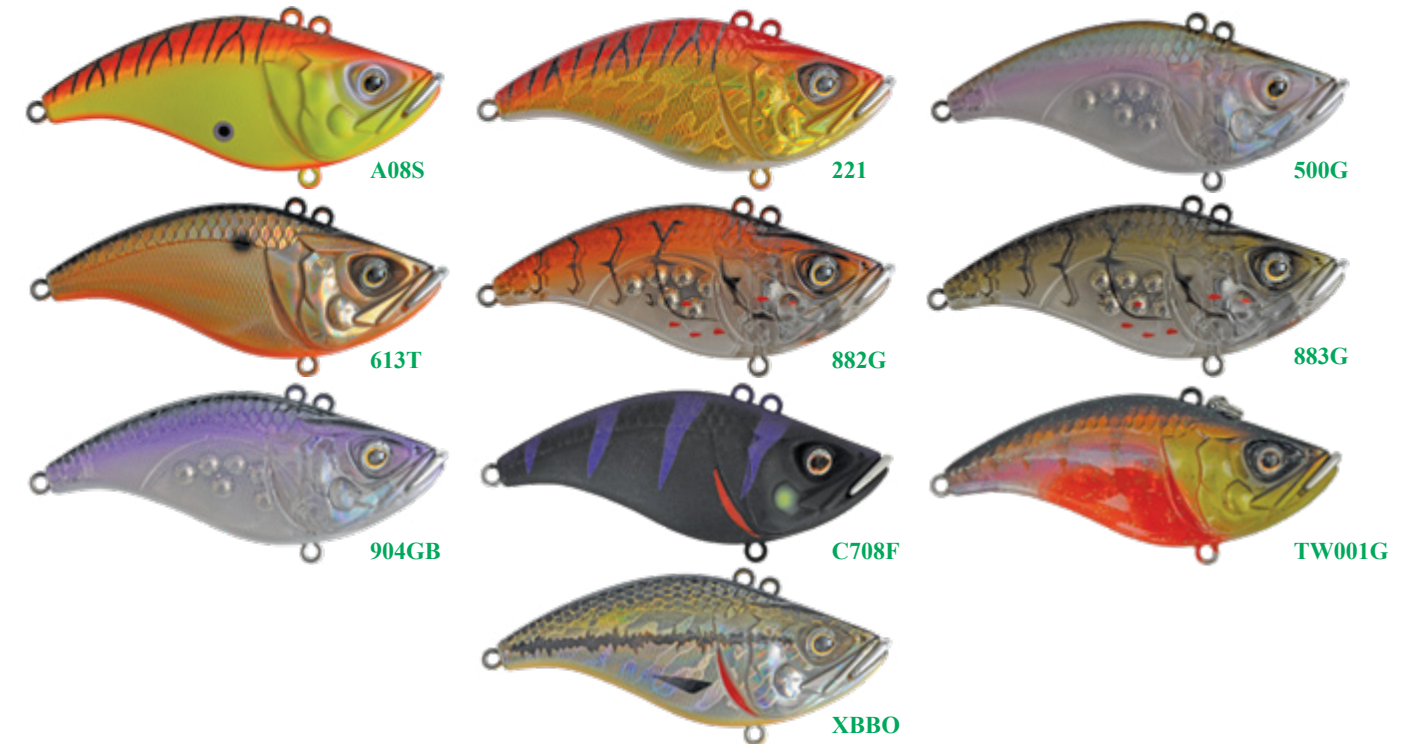
HUMMER 65



The Hummer is a plastic vibe that is perfectly weight balanced that allows the lure to rest on the bottom perfectly on its precise weighted chin. It has a fantastic action on the drop and lift. The Hummer also features two top tow points that allows the angler to impart different action on the lure. It is deadly on Bass, Yellowbelly, Mulloway and Mangrove Jack.

6.5cm 13.6grams Sinking

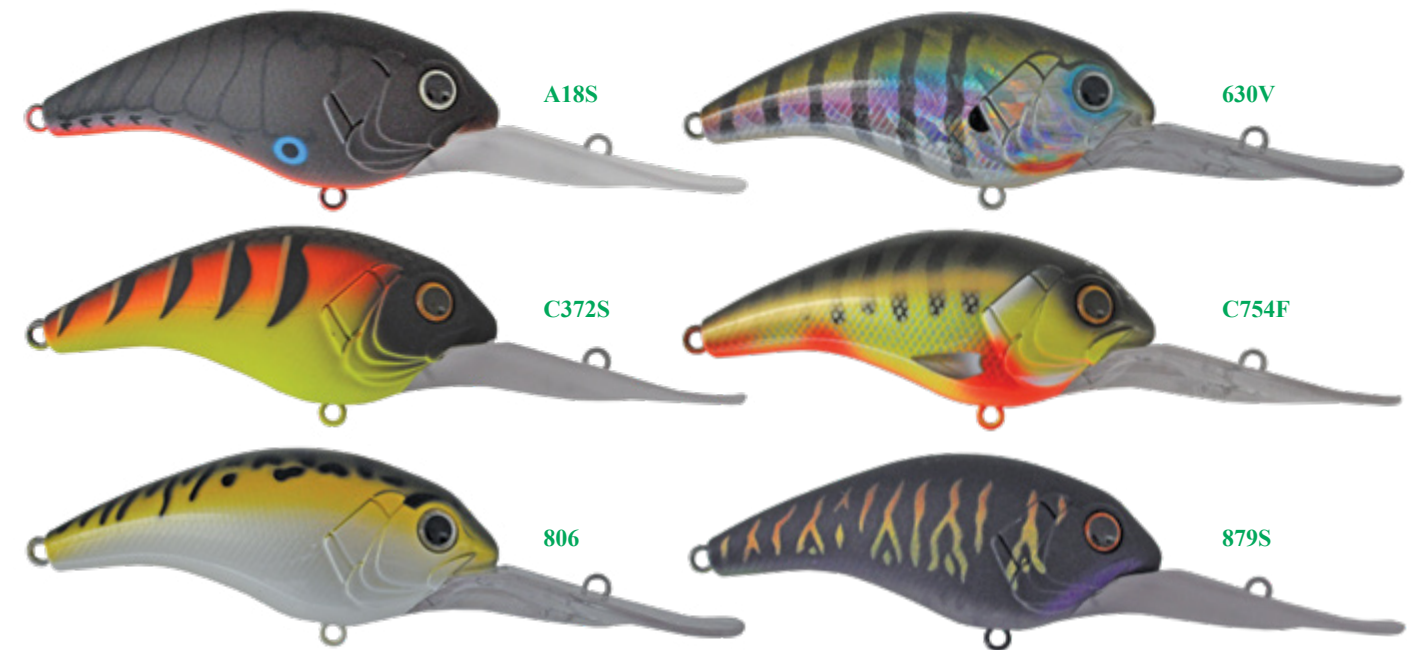
HUMMER 75



The Hummer is a plastic vibe that is perfectly weight balanced that allows the lure to rest on the bottom perfectly on its precise weighted chin. It has a fantastic action on the drop and lift. The Hummer also features two top tow points that allows the angler to impart different action on the lure. It is deadly on Murray Cod, Yellowbelly and Barramundi.

7.5cm 21.8grams Sinking

BOBCAT



A dynamite large crankbait for Natives. It features an outstanding swaying action with Extra-Extra Loud In-Built rattles. Ideal in murky or dirty water. Deadly on Murray Cod, Barramundi, Mulloway and Snapper

10cm 60grams Floating Dives to approx. 25ft

THE GUPPIE



(SPARE TAILS ARE AVAILABLE IN ALL COLOURS)
CHG, GOG, MOG, ORG & WHI

The TrueGlide Guppie has been the gold standard for handmade wood glide baits throughout Europe and the U.S.A. The paint schemes incorporate using paint or glitter on the **INSIDE SHELL** of the bait, in addition to painting the outside shell, layering paint between topcoats for a **3-D effect**. It also prolongs the colour of the bait fish after fish. Strike Pro has even replicated the **3-D eyes** that TrueGlide are famous for. The Guppies body profile allows the lure to produce an amazing body roll and it slides from side to side in outstanding fashion. The Guppie also features an innovative **cork screw** at the tail of the bait allowing the angler to fish with either a **CURLTAIL** or **PADDLETAIL** soft plastic tail, creating the **ULTIMATE SWIM BAIT!** The Guppie is a very effective lure that is deadly on Barramundi, Mulloway, Murray Cod and pelagic species.

13.5cm 120grams Sinking Dives to approx. 4ft

X-BUSTER



The X-Buster is an outstanding glidebait of the purest pedigree. The X-Buster resembles a Bony Bream to a tee and is built extremely tough with a **tensile strength of 35kgs**. This lure **Suspends** so it will stay in the strike zone and has a superb swaying action. Each lure features a single joint with a **soft rubber tail**. Deadly on Barramundi, Murray Cod and Mulloway.

17cm 88grams Suspending Dives to approx. 4ft

GLIDER



The Glider is a superb miniature swimbait of the purest pedigree. The Glider resembles a Redfin or Bony Bream to a tee and is built tough. This lure **Sinks** slowly so it will stay in the strike zone. Each lure is double jointed and has an outstanding lifelike swimming action. Ideal for Bass, Yellowbelly, Redfin, Trout, Estuary Perch & Bream

6.6cm 6.2grams Sinking Dives to approx. 6ft

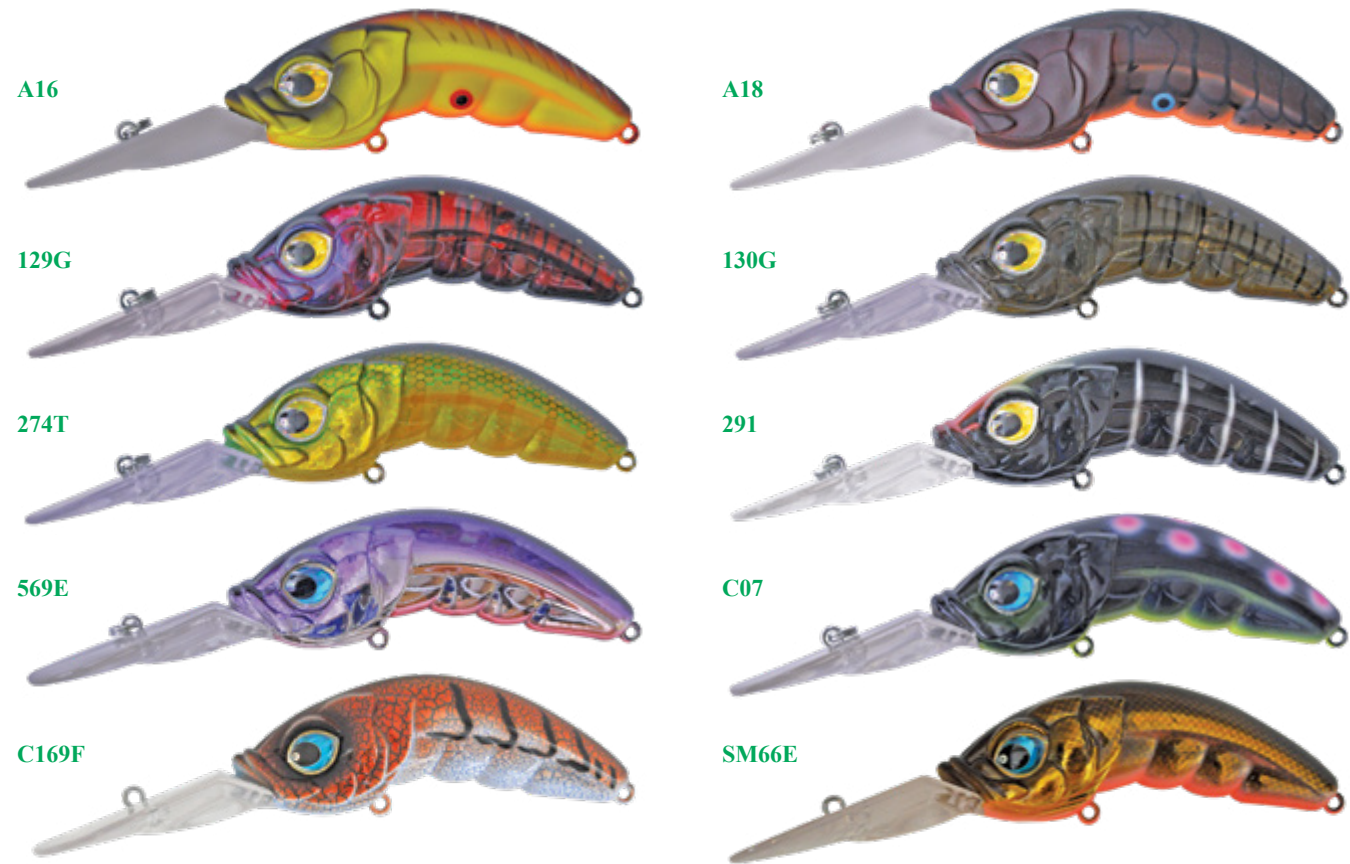
TINY BUSTER JNR



The smallest model in the famous Strike Pro range of Buster Jerk lures. These highly popular baits have sold more than 1,000,000 units throughout the World in the past 10 years. The Tiny Buster Jrn is a slide bait that has an amazing action that many fish find appealing.

6.8cm 10.3grams Sinking Dives to approx. 6ft

HUNCHBACK II



A unique deep diving minnow with an head down swaying action. Extra loud **in built rattle**, featuring heavy duty VMC Permasteel trebles. Superb Murray Cod & Yellowbelly also deadly on Barramundi.

8cm 22grams Floating Dives to approx. 20ft

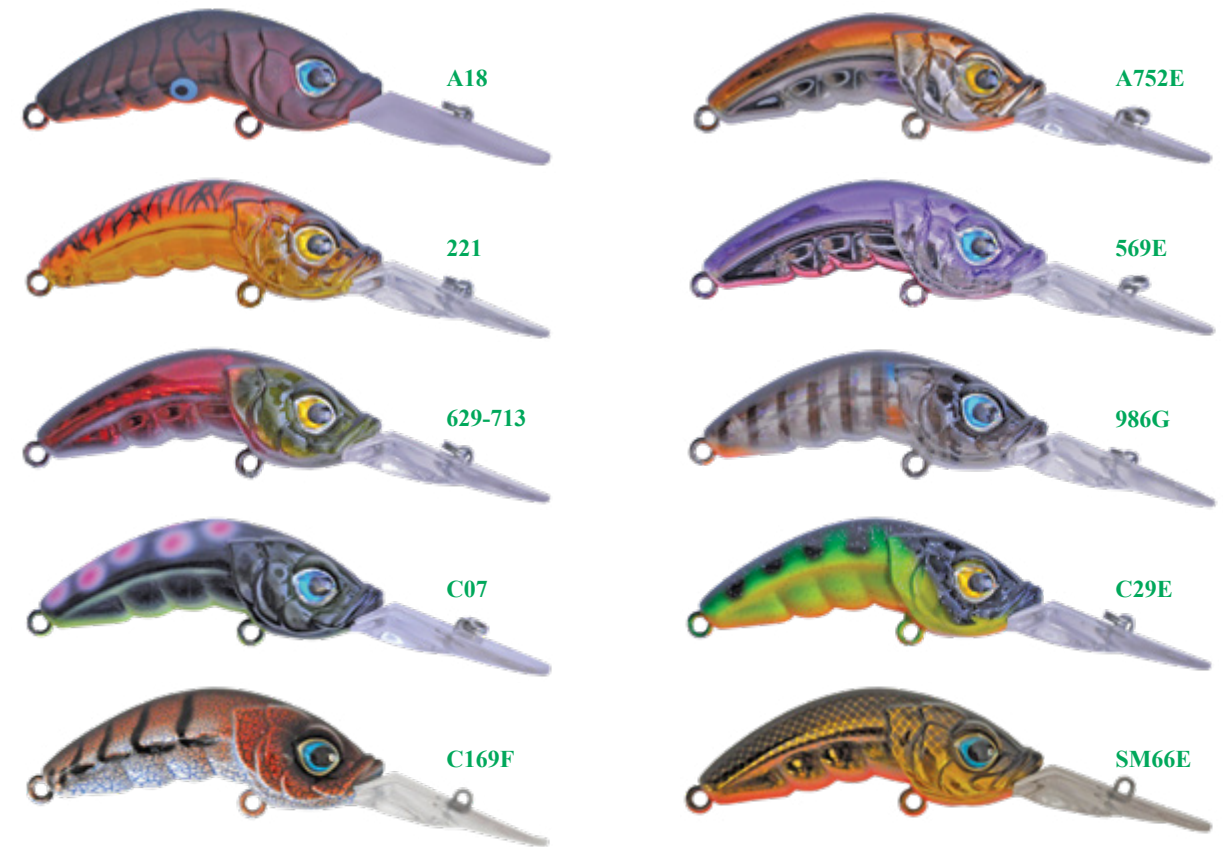
HUNCH WALKER



The Hunch Walker is a superb **Wakebait** that works on the surface and sub surface just under the in the scum line. When it is retrieved across the surface it creates a commotion and paddles just looks like a Frog or Cicada kicking across the top. The Hunch Walker is outstanding on Bass, Estuary Perch, Murray Cod and Sooty Grunter.

5.5cm 6.5grams Surface/Sub Surface

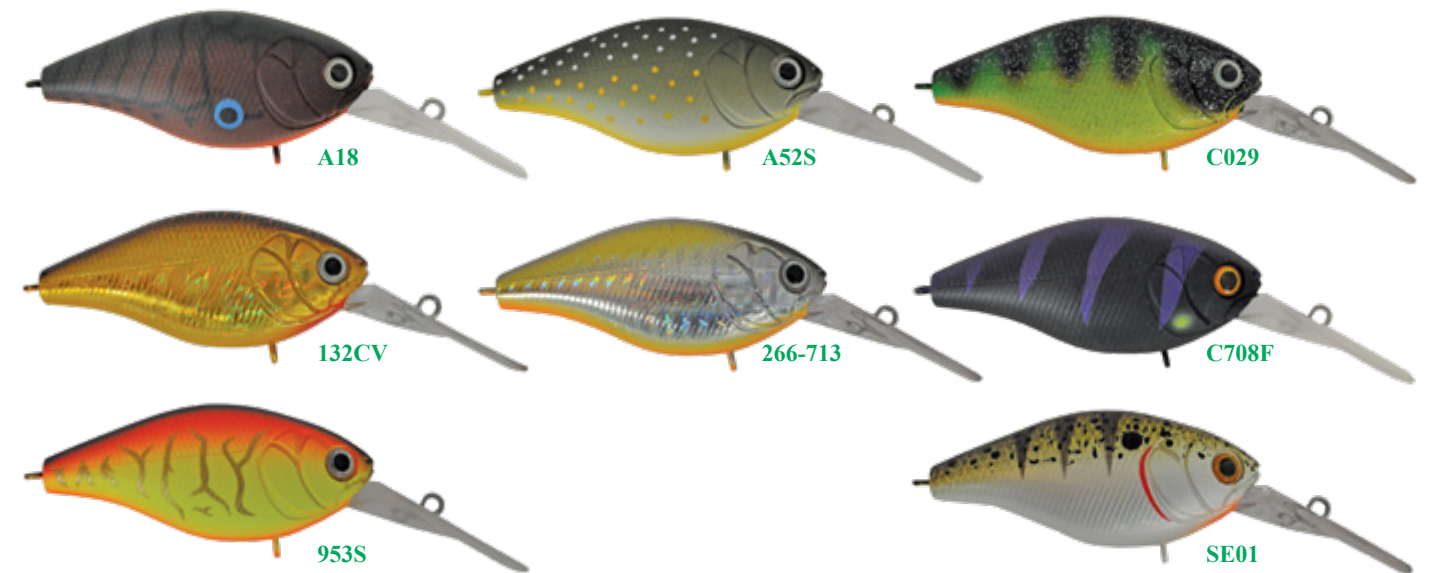
MINI HUNCH



A smaller version of the popular Hunchback. This lure has been released due to demand by Native and Bass anglers wanting a smaller version. It features **extra large rattles**. It has proven effective on Bass, Yellowbelly, Cod, Redfin and large Trout.

5.5cm 7.5grams Floating Dives to approx. 12ft

FAT CAT



Superb mid-sized finesse crankbait for Natives. It features an outstanding swaying action with **Extra Loud In-Built rattles**. Ideal in murky or dirty water. Deadly on Yellowbelly, Bass, Murray Cod, Estuary Perch and Silver Perch.

6cm 16grams Floating Dives to approx. 12ft

REDFIN JIG



Superb jigging action and finish. Great range of bright, fish attracting colours. Long tail for a slower glide through the water. Red rear tail fin for added attractant. Ideal for Redfin, Bass and other freshwater jigging applications.

5.5cm 22grams Sinking

BOB 'N' SPOON



The Bob 'N' Spoon can be cast retrieved or can be vertically jigged or trolled. It has an erratic swaying action, in built rattles and it can be reversed to change the action. It has proven deadly on Trout, Redfin and Bass.

5.5cm 7.3grams Sinking



Visit and Follow **JuroOzPro** on You Tube for all the Videos on the outstanding Strike Pro Lure range.

SPINNERBAITS 1/4OZ & 3/4OZ



A popular style lure featuring silk-cut silicon round skirts, ball bearing swivels and holographic blades. Superior quality and action. Ideal for Murray Cod, Yellowbelly, Bass, & Redfin

9cm 1/4oz Sinking or 10cm 3/4oz Sinking

910F Purple Zonker

*Denotes 3/4oz size pictured



CRAB



Black Crab (BLK) UV



Blue Swimmer (BS)



Brown Crab (BRN)



Red Claw (RC) UV



Sand Crab (SND) UV



Crab Rigged

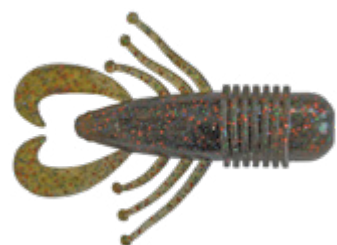
The Strike Pro Enticer Crab is the most realistic soft plastic Crab ever developed with a superb action that just looks like the real thing. It can be rigged on a **Enticer Pro Series Bullet type Jighead Size #4** and used with a lift and drop technique or just slow rolled over the bottom and is very snag resistant. It can also be rigged on a HWS for a slower flutter on the drop approximately 1/2 the speed of a Standard Jighead. Other rigging options include rigging it with a Cobra style Jighead to stand up in a strike pose or even rigged on a 90 degree Jig Hook to fish across the top of Oyster Racks, Snags and Structure.

The Enticer Crabs are a **Neutral Buoyant** Soft Plastic that drops and sinks like a real Crab. Its legs flutter and move just like a natural Crab, and they are **'SCENT INFUSED'** with a secret formula to smell just like the real thing!

The Strike Pro Enticer Crabs come packaged with **internal trays** and are 100% perfect out of the packet to use every time.

Carapace 23mm x 20mm 6pcs per pkt Scent Infused

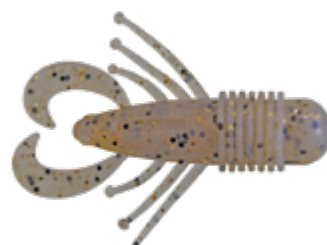
FINESSE BUG



Bloodworm (BW)



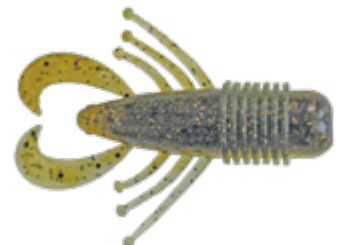
Crystal Olive (CO)



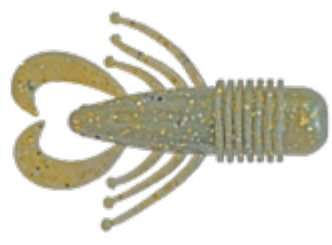
Crystal (CY)



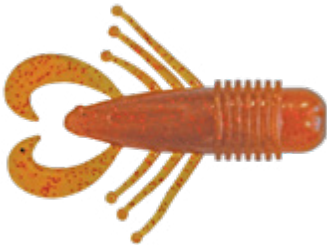
Glass Prawn (GP) UV



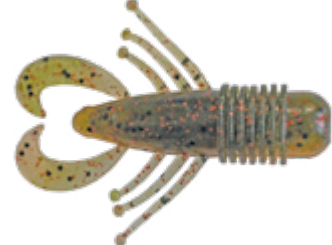
Kiwi (KW) UV



Oyster (OS)



UV Prawn (UV) UV



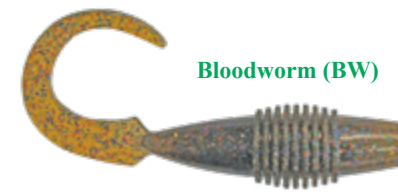
Watermelon Red (WR)

The Strike Pro Finesse Bug is a superb Creature Bait that can imitate a Prawn, Bass Yabby (Nipper), Yabby, Crab or Nymph. The Finesse Bugs also feature a smooth body with ribbing added in the body to increase Vibration and will also hold scent if applied, for a longer period of time. The design of the tail section has been done so you don't need to trim the tail for the modern style of Jigheads that most anglers use today. The Feelers give a superb swaying action on the drop and lift and the legs have weight balls added to the ends for added movement and attraction. The Finesse Bugs can be rigged on a **Enticer Pro Series Bullet head Jighead Size #1/0** a HWS for a slower sink rate and more delicate presentation.

They also feature a **Rigging Slot System** so you know they are rigged straight and perfect every time.

55mm 8pcs per pkt Scent Infused

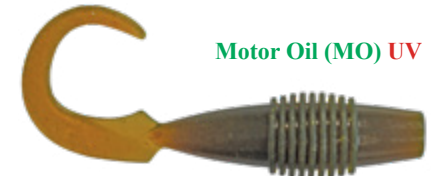
FINESSE GRUB 3"



Bloodworm (BW)



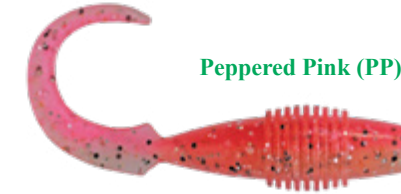
Gold Gudgeon (GG)



Motor Oil (MO) UV



New Penny (NP)



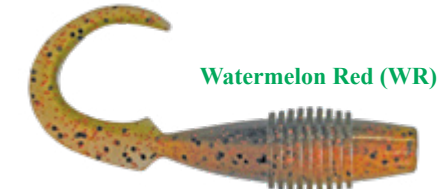
Peppered Pink (PP)



Pumpkin Seed (PS)



Toffee Apple (TA)

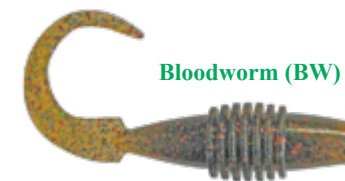


Watermelon Red (WR)

The Strike Pro Finesse Grubs feature the finest tails ever produced on a Grub style plastic and it creates the most tantalising action and movement that fish find appealing. The Finesse Grubs also feature a smooth body with ribbing added in the body to increase Vibration. The design of the head section has been done so you don't need to trim the head for the modern style of Jigheads that most anglers use today. The Finesse Grub 3" fine tail will work on the lift and drop using ultra light Jigheads and are best rigged on an **Enticer Pro Series Jighead Size #2/0** or can be rigged on a Worm Hook as it is Neutral Buoyant for use across the top of Oyster Racks or for surface fishing. The Finesse Grubs feature 8 pcs per packet and have internal trays so they are 100% perfect to use every time.

3" (76mm) 8pcs per pkt Scent Infused

FINESSE GRUB 2"



Bloodworm (BW)



Gold Gudgeon (GG)



Golden Oil (GO) UV



Motor Oil (MO) UV



New Penny (NP)



Peppered Pink (PP)



Pumpkinseed (PS)



Watermelon Red (WR)

The Strike Pro Finesse Grubs feature the finest tails ever produced on a Grub style plastic and it creates the most tantalising action and movement that fish find appealing. The Finesse Grubs also feature a smooth body with ribbing added in the body to increase Vibration and have been designed so you don't need to trim the head for the modern style of Jigheads that most anglers use today. The Finesse Grub 2" fine tail will work on the lift and drop using lightweight Jigheads even down to 1/32oz and lighter and are superb for finesse fishing for flighty fish in shallow water and around structure. They are best rigged on a **Enticer Pro Series Jighead Size #1**. The Finesse Grubs feature 8 pcs per packet and have internal trays so they are 100% perfect to use every time.

2" (50mm) 8pcs per pkt Scent Infused

PRO SERIES JIGHEADS

ACTUAL SIZES



Size #2/0 Designed to be used with Strike Pro Enticer Finesse Grubs 3" & other quality Plastics



Size #1/0 Designed to be used with Strike Pro Enticer Finesse Bugs & other quality Plastics



Size #1 Designed to be used with Strike Pro Enticer Finesse Grubs 2" & other quality Plastics



Size #4 Designed to be used with Strike Pro Enticer Crabs & other quality Plastics

The Enticer Pro Series Jigheads have been designed with each hook size chosen to be used in conjunction with the Strike Pro Enticers range of Soft Plastics. They are also well suited to use with other quality Plastics. The Enticer Pro Series Jigheads feature the finest quality **Black Nickel Chemically Sharpened Hooks** with rounded bends to increase hook exposure and to increase hook up rates. They also offer a quality lead finish with a superb collar design and feature a flat end so your plastic fits snug against the head.

All sizes feature 5 pcs per pkt.

POWERDOTS



Strike Pro Enticer Soft Plastics the perfect combination with Enticer Pro Series Jigheads



The Strike Pro Powerdots help the angler turn a floating lure into a **Suspending lure** or a **Suspending lure** into a slow sinking lure.

Available in Sml, Med & Lge
25 pieces per pack
(5 x 5 pcs per size)

ARMOUR 8 BRAID

Strike Pro Armour 8 is made from **100% PE Fibre** material from the **U.S.A.** to produce one of the World's finest lines. It is a high performance 8 Carrier Braid that features a rounded body construction that helps reduce wind knots, backlashes and rod tip wrapping. Strike Pro Armour 8 Braid also features an **Advanced PTFE coating** that produces a super slick finish that reduces rod guide friction, increases casting distance out of sight, offers amazing abrasion resistance and helps to resist saltwater penetrating the fibres. It also features an extremely low stretch core for superior hooking power, sensitivity and control.

'Strike Pro Armour 8 is an Advanced Super Line'

AVAILABLE IN
HI VIS ORANGE, HI VIS YELLOW & SLATE GREY



150 Mt		
LINE CLASS	PE RATING	DIAMETER
10lb	PE0.6	0.12mm
15lb	PE0.8	0.14mm
20lb	PE1.0	0.165mm
30lb	PE2.0	0.234mm
50lb	PE4.0	0.32mm

300 Mt		
LINE CLASS	PE RATING	DIAMETER
20lb	PE1.0	0.165mm
30lb	PE2.0	0.234mm
50lb	PE4.0	0.32mm

T - SHIRTS



Quality cotton T-Shirt. Strike Pro Logo featured on the Front and Back. Available in **Black** or **White**
Available in sizes:
Lge, X-Lge & XX-Lge.

HOODIES



The Strike Pro Hoodie is comfortable and lightweight. It features a Hood with draw strings and hand warmer front pockets. Strike Pro Logo on the Back and Front.
Available in sizes:
Lge, X-Lge & XX-Lge.

STICKERS



Strike Pro Stickers are ideal for Boats, Kayaks or Cars. Sets of 2.
Available in Sml, Med & Lge

CAPS



The Strike Pro Cap is Black and features a mesh back for added ventilation.
One size fits all.

Tokuryo Line Lab has been established in Taiwan since 1983 and weaving their history for over 30 years.

Tokuryo Line Lab is committed to producing high end fishing lines including PE Lines, Fluorocarbons and Monofilament Lines using the finest Japanese raw materials on the latest most updated machinery and technological breakthroughs in the manufacturing of PE Lines, Fluorocarbons and Monofilament lines from around the World.

MONSTERPRO 8 BRAID



Tokuryo Line Lab Monster 8 Braid is made from 100% Japanese UHMWPE raw material and is a superior 8 carrier PE Braid. Monster 8 Braid offers a Special Double Process Technic and construction to increase strength, tighten the weave and increase the abrasion resistance of the braid. It's ultra thin diameters also attribute to casting distance as well as it's special SI-Coated Surface Treatment. This SI-Coated treatment also helps to produce a super smooth surface that creates far less guide friction noise than common braids. Monster 8 Braid is a low stretch, high sensitivity line that offers superb bite detection. Monster 8 Braid is a premium PE line suited to many fishing situations.

AVAILABLE IN LIGHT GREEN

150 Mt		
LINE CLASS	PE RATING	DIAMETER
18lb	PE1.0	0.12mm
25lb	PE1.5	0.16mm
33lb	PE2.0	0.20mm
50lb	PE3.0	0.26mm
80lb	PE6.0	0.40mm

300 Mt		
LINE CLASS	PE RATING	DIAMETER
18lb	PE1.0	0.12mm
25lb	PE1.5	0.16mm
33lb	PE2.0	0.20mm
50lb	PE3.0	0.26mm
80lb	PE6.0	0.40mm

- 100% Japan UHMWPE raw material
- 8 strands braiding process
- C/AC twist method
- special double process technic
- SI coating surface treatment
- environmental care development

CASTINGPRO 8 BRAID



Tokuryo Line Lab Casting Pro 8 Braid is made from 100% Japanese UHMWPE raw material and is a premium 8 carrier PE Braid. Casting Pro features a Special Dual Braiding Technic and construction that offers outstanding casting distance, accuracy and fewer line troubles. It's ultra thin diameters also attribute to casting distance as well as it's special SI-Coated Surface Treatment. This SI-Coated treatment also helps to produce a super smooth surface that creates far less guide friction noise than common braids. Casting Pro PE is a low stretch, high sensitivity line that offers superb bite detection. It's Blue colour offers excellent visibility in most light conditions.

AVAILABLE IN BLUE

150 Mt		
LINE CLASS	PE RATING	DIAMETER
10lb	PE0.4	0.05mm
12lb	PE0.6	0.07mm
15lb	PE0.8	0.09mm
18lb	PE1.0	0.12mm
25lb	PE1.5	0.16mm

300 Mt		
LINE CLASS	PE RATING	DIAMETER
10lb	PE0.4	0.05mm
12lb	PE0.6	0.07mm
15lb	PE0.8	0.09mm
18lb	PE1.0	0.12mm
25lb	PE1.5	0.16mm

- 100% Japan UHMWPE raw material
- 8 strands braiding process
- C/AC twist method
- special dual braiding technic
- SI coating surface treatment
- environmental care development

FINESSE GAME x 4 BRAID



Tokuryo Line Lab Finesse Game 4 Braid is made from 100% Japanese UHMWPE raw material. Tokuryo Finesse Game 4 Braid is a quality 4 carrier PE line that offers superior qualities for a 4 carriers braid at exceptional pricing. Finesse Game 4 braids construction produces a tighter weave, creates a reduced diameter and smoother finish. The SI-Coated treatment also helps to produce a super smooth surface that creates far less guide friction noise than common braids. Finesse Game 4 is the perfect choice for finesse fishing situations where it's low stretch core, high sensitivity, superb bite detection and exceptional casting distance are essential.

AVAILABLE IN DARK GREEN, PINK & YELLOW

150 Mt		
LINE CLASS	PE RATING	DIAMETER
8.8lb	PE0.6	0.13mm
10.1lb	PE0.8	0.15mm
15.4lb	PE1.5	0.20mm
25.3lb	PE2.0	0.24mm
29.9lb	PE2.5	0.26mm

300 Mt		
LINE CLASS	PE RATING	DIAMETER
29.9lb	PE2.5	0.26mm
49.9lb	PE5.0	0.38mm
79.9lb	PE8.0	0.48mm

- 100% Japan UHMWPE raw material
- 4 strands braiding process
- SI coating surface treatment
- C/AC twist method
- environmental care development

Tokuryo Line Lab Jigging Pro 8 Braid is made from 100% Japanese UHMWPE raw material to produce the finest quality 8 carrier PE Braided line. Jigging Pro 8 is a Multi colour change braid that changes colour every 10mts. Jigging Pro features a Special Double Process Technic that helps to increase strength, tighten the weave and increase the abrasion resistance of the braid. The special SI Coating offers a super smooth coating to create less guide friction. This Braid is suitable for Jigging and casting Stickbaits and Poppers.

AVAILABLE IN MULTI



300 Mt		
LINE CLASS	PE RATING	DIAMETER
50lb	PE3.0	0.26mm
80lb	PE6.0	0.40mm
100lb	PE8.0	0.42mm



- 100% Japan UHMWPE raw material
- 8 strands braiding process
- C/AC twist method
- special double process technic
- SI coating surface treatment
- environmental care development

JIGGINGPRO 8 BRAID

FLUOROCARBON 100%



Tokuryo Line Lab Fluorocarbon 100% is a **100% pure Fluorocarbon** and is made from **Japanese raw materials** and is virtually invisible underwater. It is a superb leader material for Lure fishing, Squid fishing and Fly fishing. Fluorocarbon 100% also features a **low stretch core** which aids in better bite detection, superior knot strength and outstanding abrasion resistance.

AVAILABLE IN CLEAR

50 Mt		
LINE CLASS	PE RATING	DIAMETER
3.7lb	PE0.8	0.161mm
5.7lb	PE1.2	0.200mm
6.8lb	PE1.5	0.218mm
9.2lb	PE2.0	0.257mm
11.6lb	PE3.0	0.298mm
15.5lb	PE4.0	0.352mm
18.4lb	PE5.0	0.393mm
19.8lb	PE6.0	0.418mm

GTFC FLUOROCARBON



Tokuryo Line Lab GTFC Fluorocarbon is a powerful **100% Fluorocarbon** designed for fishing for powerful tough species and in rugged terrain. GTFC is made from **Japanese raw materials** and is harder and tougher than traditional Fluorocarbons so it offers **maximum abrasion resistance** and knot strength. It also features a **low stretch core** for better bite detection. GTFC Fluorocarbon is suited for G.T's, Tuna, Barramundi and reef species.

AVAILABLE IN CLEAR

50 Mt		
LINE CLASS	PE RATING	DIAMETER
35lb	PE10.0	0.555mm
49.3lb	PE16.0	0.685mm
61.1lb	PE22.0	0.816mm
80.5lb	PE30.0	0.952mm
104.2lb	PE40.0	1.100mm
130.4lb	PE50.0	1.229mm

PROFC FLUOROCARBON



Tokuryo PROFC is a **100% pure Fluorocarbon** made for fishing straight through when fishing with lures for Bream, Whiting, Bass, Estuary Perch, Squid & Murray Cod. It is perfect to use finesse fishing and when no line shadow is wanted. PROFC is made from **Japanese raw materials** and is **softer** than traditional Fluorocarbons so it lays and casts better of the reel. PROFC also features a **low stretch core** for better hook sensitivity and offers superior knot strength and high abrasion resistance.

AVAILABLE IN CLEAR

150 Mt		
LINE CLASS	PE RATING	DIAMETER
3.7lb	PE0.8	0.161mm
4.5lb	PE1.0	0.178mm
6.8lb	PE1.5	0.218mm
9.2lb	PE2.0	0.257mm
28.9lb	PE8.0	0.505mm

PRO-NY FLUORONYLON



Tokuryo Line Lab PRO-NY is an outstanding **Fluorocarbon Coated Monofilament** hybrid Fluoronylon line suited for Estuary & Freshwater fishing. PRO-NY is made from **Japanese raw materials** and has outstanding softness and suppleness. Tokuryo PRO-NY also offers **excellent abrasion resistance** and features a **low stretch core** for better bite detection.

AVAILABLE IN BROWN

300 Mt		
LINE CLASS	PE RATING	DIAMETER
4.2lb	PE0.8	0.15mm
6.4lb	PE1.2	0.18mm
7.9lb	PE1.5	0.20mm
11lb	PE2.0	0.23mm
14.7lb	PE3.0	0.29mm
19.1lb	PE4.0	0.33mm
27.3lb	PE6.0	0.41mm

SHOCK LEADER



Tokuryo Line Lab Shock Leader is a powerful soft **Fluorocarbon Coated Monofilament** Shock Leader that offers the ultimate cushion under pressure. Shock Leader is made from **Japanese raw materials** and has outstanding softness and suppleness. Tokuryo Shock Leader also offers **superior abrasion resistance, high knot strength**, features **low diameters** and has **ultra high shock absorption**.

AVAILABLE IN CLEAR

50 Mt		
LINE CLASS	PE RATING	DIAMETER
52.2lb	PE14.0	0.62mm
61.9lb	PE20.0	0.74mm
79.3lb	PE26.0	0.84mm
103.4lb	PE60.0	1.20mm
143lb	PE100	1.60mm

CAPS



Tokuryo Line Lab Cap features Mesh back Fully Adjustable

T-SHIRTS



Tokuryo Line Lab high quality Cotton T-Shirt Available in White or Blue Sizes; M, L, XL & XX-L

SPINFOCUS SU REELS


SU2500 BH

- High Tensile Strength Body
- Aluminium spool with Carbon Lip
- Intelligent Oscillating System
- Thick Bail Arm System
- Instant Anti Reverse
- Computer Balanced Rotor
- Carbon Drag Washers
- 8 TiCA RRB Rust Resistant Bearings



MODEL	GEAR RATIO	LINE CAPACITY	MAX DRAG
SU 2500	5.2:1	240yd x 6lb	4kg
SU 2500 BH	5.2:1	240yd x 6lb	4kg
SU 3500	5.2:1	300yd x 10lb	6kg
SU 4500	5.2:1	280yd x 15lb	7kg

DYNASPIN GH REELS


- Dynamic White Colour
- Cybernetic Frame System
- Aluminium spool
- Intelligent Oscillating System
- Instant Anti Reverse
- Computer Balanced Rotor
- Carbon Drag Washers
- 6 TiCA RRB Rust Resistant Bearings



MODEL	GEAR RATIO	LINE CAPACITY	MAX DRAG
GH 1500	4.5:1	150yd x 4lb	2kg
GH 2500	4.6:1	200yd x 6lb	4kg
GH 3500	4.6:1	260yd x 10lb	6kg
GH 4500	4.6:1	300yd x 15lb	6kg
GH 6000	4.6:1	300yd x 20lb	10kg

GYMIR GVAT REELS


- High Tensile Strength body
- Aluminium Alloy spool
- Worm Shaft System
- Easy Maintenance Oil Inlet System
- Thick Bail Arm System
- Instant Anti-Reverse
- Carbon Drag Washers
- 6 TiCA RRB Rust Resistant Bearings



MODEL	GEAR RATIO	LINE CAPACITY	MAX DRAG
GVAT 1500	5.2:1	195yd x 4lb	4kg
GVAT 2500	5.2:1	210yd x 6lb	4kg
GVAT 3500	5.2:1	260yd x 8lb	8kg
GVAT 4500	5.2:1	250yd x 15lb	8kg
GVAT 6000	4.1:1	240yd x 20lb	10kg

GOJIRA GGPT REELS


- High Tensile Strength Body
- Slim body frame
- Aluminium Spool
- Thick Bail Arm System
- Instant Anti Reverse
- Soft touch handle
- Carbon Drag Washers
- 3 Stainless Steel Ball Bearings



MODEL	GEAR RATIO	LINE CAPACITY	MAX DRAG
GGPT 2500	5.2:1	200yd x 6lb	4kg
GGPT 3500	4.9:1	260yd x 10lb	6kg
GGPT 4500	4.9:1	300yd x 15lb	6kg

ZATARA LBXT REELS



- High Tensile Strength body
- Slim body frame
- Aluminium spool
- Thick Bail Arm System
- Instant Anti Reverse
- Soft touch handle
- 5 TiCA RRB Rust Resistant Bearings



MODEL	GEAR RATIO	LINE CAPACITY	MAX DRAG
LBXT-L 2000	5.2:1	155yd x 6lb	3kg
LBXT-L 3000	5.2:1	190yd x 8lb	3kg
LBXT-L 4000	4.3:1	195yd x 12lb	4kg
LBXT-L 5000	4.3:1	220yd x 15lb	6kg

EZI CAST EC SPIN REELS



- High Tensile Strength body
- Z Oscillation system for flat line lay
- Aluminium spool
- Thick Bail Arm System
- Instant Anti Reverse
- Soft touch handle
- 3 Stainless Steel Ball Bearings



MODEL	GEAR RATIO	LINE CAPACITY	MAX DRAG
EC 2500	5.2:1	230yd x 4lb	3kg
EC 4000	5.2:1	250yd x 15lb	4kg
EC 6000	4.3:1	195yd x 20lb	6kg

BRUTE WOLF BW REELS



- High Tensile Strength body
- Slim body frame
- Intelligent Oscillating System
- Computer balanced rotor
- Aluminium spool
- Multi Stop Anti Reverse
- Extra Large Soft EVA Power handle
- 4 TiCA RRB Rust Resistant Bearings



MODEL	GEAR RATIO	LINE CAPACITY	MAX DRAG
BW 8000	4.4:1	280yd x 25lb	10kg

GRAPHITE EXTREME SERIES



The Graphite Extreme Series is a versatile range of rods that is well suited to many applications in Australian waters, from casting plug style lures to throwing metal lures off rocks and surf beaches, as well as soft plastics fishing. Graphite Extreme Series rods feature High Modulus Graphite Blanks with a Kevlar Wrap through the entire blank for added strength. The Spigot Ferrule Join eliminates the flat spot effect that is often found in two piece rods. Other features include a Japanese style reel seat configuration, Pac Bay Guides for use with braided lines and a Folding Hook Keeper.

MODEL	LENGTH	LINE CLASS	LURE WEIGHT	PIECES
SE-HB 421302	7'	8 - 15lb	3/8 - 3/4 oz	2
SE-HB 424402	8'	8 - 15lb	3/8 - 3/4 oz	2

NIBBLE TIP EXTREME SERIES


The Nibble Tip Extreme Series rods are based on the original Australian Nibble Tip Rods that were designed by Juro many years ago, and are ideal for targeting species such as Trout, Bream and Whiting.

They feature a butt and mid section and a 'Nibble-Tip' section that acts as a bite detector. The butt section is constructed from **High Modulus Graphite** with a **Kevlar Wrap** reinforcement for solid lock-up. The second section is made from **'E'-Glass**, and the three tip sections from **Solid Fibreglass**. Each rod features a **Screw-Off Base** that provides storage for spare tips.

There are three different weight /action colour -coded tips supplied with each rod. The Nibble Tip Extreme Series rods also feature **Hypalon Grips** and **Pac Bay Guides**.

MODEL	LENGTH	LINE CLASS	PIECES
SD-LA 419802	6'6"	4 - 8lb	2 + 3 tips
SD-LA 422902	7'6"	4 - 8lb	2 + 3 tips
SD-LA 425902	8'6"	6 - 10lb	2 + 3 tips

SPINFOCUS SPIN SERIES


The TiCA Spinfocus series rods have been designed with the finesse angler in mind. These rods are suited for Trout and Bass anglers in freshwater and anglers targeting Bream, Estuary Perch and Whiting in Saltwater.

The Spinfocus rods feature a **composite Graphite/Fibreglass blank**. These rods feature **high quality cork grips**. They also feature a **unique light weight exposed graphite reel seat** and **high quality Stainless Steel guides** that helps keep all the rods in this range under 100grams in total weight.

MODEL	LENGTH	LINE CLASS	LURE WEIGHT	PIECES
SM-GA50L1	5'0"	4 - 8lb	1/32 - 3/16 oz	1
SM-GA56L2	5' 6"	4 - 8lb	1/16 - 1/4 oz	2
SM-GA60L2	6'0"	4 - 8lb	1/16 - 1/4 oz	2

SHADOW SURF ROD


Fully custom built in Western Australia to the highest standards.

The Shadow Surf is built on the highest quality **Grey Carbon Nano Blank**. This creates a super slim lightweight rod with extreme power and cast rating.

The Shadow Surf features a short butt ideal for Casting and Spinning.

It also features a **Pac Bay® Reel Seat**, **Pac Bay® Titanium Framed**, **Titanium Nitride Ceramic Guides** and **Tip**, **Sanded grips** at ferrule connections and is Over and Underbound in a Black on Black with Gold Metallic trims. This Surf Rod is of the highest quality and even the most discerning angler will appreciate the quality of this rod.

MODEL	MOUNT	LENGTH	LINE CLASS	LURE WEIGHT	PIECES
SHADOW SURF	18" THREADLINE	3.9mt	15 - 24kg	250gm	3

SLAYER SURF ROD


Fully custom built in Western Australia to the highest standards.

The Slayer Surf is built on the highest quality **Metallic Blue Nano Blank**. This creates a super slim lightweight rod with extreme power and cast rating.

The Slayer Surf features a long butt ideal for Casting and Spinning.

It also features a **Pac Bay® Reel Seat**, **Pac Bay® Silicone Guides** and **Tip**, **Rear Hypalon Grip** featuring **finger shrink tube**, **Sanded grips** at ferrule connections, **rubber butt cap** and is Over and Underbound in a Black on Blue with Silver Metallic trims.

MODEL	MOUNT	LENGTH	LINE CLASS	LURE WEIGHT	PIECES
SLAYER SURF 12'	20" THREADLINE	12ft	10 - 20kg	150 - 200gm	2
SLAYER SURF 14'	20" THREADLINE	14ft	10 - 20kg	150 - 300gm	3

Ozflex Rods are fully custom built Fishing Rods, built in Western Australia to stringent Australian designs using only the finest quality Carbon blanks with many featuring **Nano Technology** within the blanks. All Ozflex Custom built Fishing Rods feature only the highest quality **Pac Bay®** componentry Made in U.S.A.

Ozflex Rods are of the highest standards, Even the most discerning angler will appreciate the quality of these rods.

FLEX - X RODS



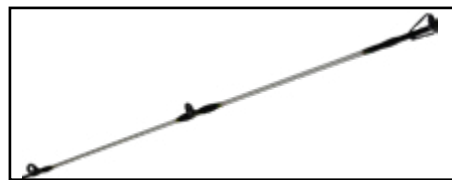
The Juro Flex-X Series of rods were developed in Australia by the Juro Oz Pro staff. Juro Flex-X rods are built with the latest technology using "MULTIFLEX" Fibres, giving incredible strength, power and durability. These rods have awesome actions with soft tips and powerful butt sections. They are also extremely sensitive as well as durable. This is a range of rods that is definitely built to last!

The Flex-X Series rods feature green and gold metallic butt wraps and are under and overbound, with deluxe stainless steel hooded reel seats. Other features include shaped EVA grips, Aluminium Oxide guides, rubber butt caps and an INTEGRATED SOLID GLASS CLEAR TIP.

There is a huge variety of choices available in the Juro Flex-X range of rods, designed to fit the many different fishing conditions around Australia. The diverse range covers everything from Freshwater and Estuary, Boat Fishing, Deepwater Bottom Fishing, right through to Surf Fishing.



Decorative Metallic Green and Gold Butt Wrap



Integrated Clear Solid Glass Tip

MODEL	STYLE	LENGTH	LINE CLASS	ACTION	PIECES
FX561 SWM	BOAT	5'6"	6 - 10kg	Medium	1
FX601 SSM	BOAT	6'	3 - 5kg	Medium/Light	1
FX601 SWM	BOAT	6'	6 - 10kg	Medium	1
FX602 SPXL	SPIN	6'	2 - 5kg	X/Light	2
FX661 SPL	SPIN	6'6"	3 - 5kg	Light	1
FX661 SWM	BOAT	6'6"	6 - 10kg	Medium	1
FX662 SPL	SPIN	6'6"	2 - 5kg	Light	2
FX662 SWM	BOAT	6'6"	6 - 10kg	Medium	2
FX701 SWL	BOAT	7'	4 - 6kg	Medium/Light	1
FX701 SWM	BOAT	7'	8 - 10kg	Medium	1
FX702 SWM	BOAT	7'	8 - 10kg	Medium	2
FX702 NT	NIBBLE TIP	7'	2 - 4kg	X/Light	2
FX802 NT	NIBBLE TIP	8'	2 - 4kg	X/Light	2
FX702 GPL	GENERAL	7'	4 - 8kg	Medium/Light	2
FX802 GPM	GENERAL	8'	6 - 8kg	Medium	2
FX1202 SFM	SURF	12'	8 - 10kg	Medium	2

f.t. NED KELLY POLES



Ned Kelly Tele Poles feature a gripped base section and an 'E' Glass tip section with a Stainless Steel eyelet. Ned Kelly Poles come with a Screw off base section so sections can be replaced easily and have rubber end cap. These poles are ideal for anglers fishing piers and rocks for species such as Squid, Mullet, Garfish and Tommy Ruffs.

MODEL	LENGTH	ACTION	PIECES
NED KELLY 6mt	6mt	5-25 grams	6
NED KELLY 7mt	7mt	5-25 grams	7

f.t. POWER STICK RODS



A great little range of powerful rods that features Camo handle grips, Stainless Steel guides and an Integrated Solid Glass Tip. The little 4' rod is ideal for Kids and when fishing in confined spaces.

MODEL	LENGTH	LINE CLASS	PIECES
POWER STICK	4'	3-6KG	1

f.t. KAYAK ROD



The Kayak rod is a super soft 2pce rod that features a decorative butt wrap, single foot guides and also features an Integrated Solid Glass Tip. This rod is suited for Kayak fishing, stream fishing and fishing in confined spaces.

MODEL	LENGTH	LINE CLASS	PIECES
KAYAK STICK	1.5mt	4-8LB	2



Visit and Follow [JuroOzPro](#) on You Tube for all the Videos on the outstanding range.

GENERAL COMBOS

SURF / ROCK COMBO
FT1200SWM 12' 2pce rod
+ FT60 Reel with 20lb line

BOATMASTER 6'6"
Multiflex MX661SWM 6'6" 2pce rod
+ Juro EB5000 Reel with 15lb line

BOATMASTER 6'
Multiflex MX601SWM 6' 2pce rod
+ Juro EB5000 Reel with 15lb line

MULTIFLEX SPECIAL LIGHT
Multiflex MX702NT 7' 2pce rod
+ Juro CF2000 Reel with 8lb line

MULTIFLEX SPIN SPECIAL
Multiflex MX602SSM 6' 2pce rod
+ Juro CF2000 Reel with 10lb line

MONSTER CRUNCHER

JURO BLUE BARBARIAN COMBO
Juro 6'6" 2pce Spin rod
+ Juro HT2000 Reel with 9lb line

JURO RED RUBY COMBO
Juro 6'6" 2pce Spin rod
+ Juro HT2000 Reel with 9lb line

JURO GREEN MEANIE COMBO
Juro 6' 2pce Spin rod
+ Juro HT2000 Reel with 9lb line

JURO PINK PRINCESS COMBO
Juro 6' 2pce Spin rod
+ Juro HT2000 Reel with 9lb line

JURO JUNIOR COMBO
Juro JJ502ML 2pce rod
+ Juro CC500 Reel with 6lb line.

JURO JUNIOR COMBO
Juro JJ502ML 2pce rod
+ Juro CC500 Reel with 6lb line.

ATLANTIS COMBOS



JURO ATLANTIS COMBO
Juro 556ML 2pce rod
+ Juro 1000 Reel with 8lb line.



JURO ATLANTIS COMBO
Juro 556ML 2pce rod
+ Juro 1000 Reel with 8lb line.



JURO ATLANTIS COMBO
Juro 556ML 2pce rod
+ Juro 1000 Reel with 8lb line.

FT. KIDS COMBOS



FORCE 10 KIDS COMBO
Force 10 4'6" 2pce rod with Clear Tip
+ Force 10 2000 Reel with line.

FORCE 10 KIDS COMBO
Force 10 4'6" 2pce rod with Clear Tip
+ Force 10 2000 Reel with line.



FORCE 10 KIDS COMBO
Force 10 4'6" 2pce rod with Clear Tip
+ Force 10 2000 Reel with line.

FORCE 10 KIDS COMBO
Force 10 4'6" 2pce rod with Clear Tip
+ Force 10 2000 Reel with line.

SOLD IN CARTONS OF 4 pcs. (1 each Colour)

Juro Rod and Reel Combo's have been selected by the Juro Ozpro Tackle Team to offer a quality product at reasonable pricing. Each combo is balanced and they all come with high quality line attached.

These combos have been developed to target bread and butter species that the Australian angler targets and are ideal for holiday makers, anglers that only fish a few times a year, beginners and are great for Children starting out in the fantastic pastime of fishing.

AUSSIE Essential Fishing Kit

Each Box Contains:

- 1 x 2 Tray Tackle Box
- 1 x Senshi Pre Tied Whiting Rig SR02
- 1 x Senshi Pre Tied Flathead Rig SR06
- 1 x Senshi Pre Tied Running Sinker Rig SR12
- 1 x Senshi Pre Tied Native River Rig SR16
- 6 x Ball Sinker #1
- 6 x Ball Sinker #2
- 6 x Ball Sinker #4
- 6 x Bean Sinker #3
- 6 x Bomb Sinker #1oz
- 10 x Octopus Hooks #3/0
- 10 x O'Shaughnessy Hooks #1/0
- 10 x Baitholder Hooks #4
- 10 x Longshank Red Hooks #6
- 10 x Barrel Swivels #8
- 10 x Snap Swivels #10
- 5 x Attractor Beads Red
- 5 x Attractor Beads Lumo
- 1 x 20gram Baitfish Lure
- 1 x Freshwater Spinning Lure
- 1 x Oval Spin Float
- 1 x Clip On Rod Bell

Total of 108 pcs.
Everything essential that the Aussie Angler needs in 1 Tackle Box!

NEW

SENSHI GRAB 'N' GO BOX



Includes 4 of the popular Senshi Pre-Tied Rigs!



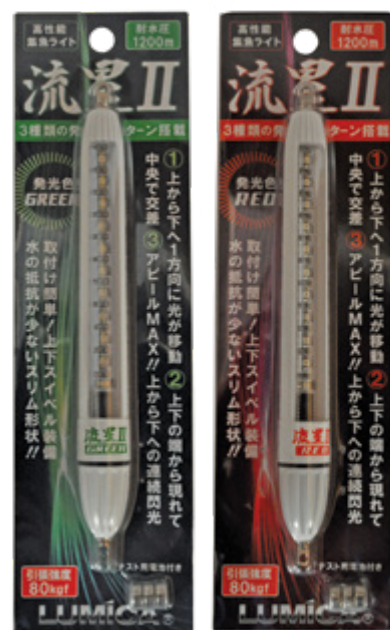
Ball Sinker #1 Ball Sinker #2 Ball Sinker #4 Bean Sinker #3 Bomb Sinker #1oz
Octopus #3/0 O'Shaughnessy #1/0 Baitholder #4 Longshank #6
Barrel Swivels #8 Snap Swivels #10 Beads Red Beads Lumo
Baitfish Lure 20gm Freshwater Spinner Oval Spin Float Rod Bell

UFO LIGHT



- Available in Multi, Blue & Purple UV
- Highest Japanese Quality
- Depth tested to 1200mt
- Pressure tested to 85kg
- Size 130mm x 28mm dia.
- 5 different Light Functions
- MULTI has Green, Blue, Red and 2 Multi Colours
- Requires 1 x AA Alkaline Battery

RYUSEI II LIGHT



- Available in Green or Red
- Highest Japanese Quality
- Depth tested to 1200mt
- Pressure tested to 80kg
- Size 147mm x 15.5mm dia.
- 3 Strobe Light Functions
- Comes with 3 x LR41 Batteries

HIGH BIT UV LIGHT



- Available in Purple UV
- Highest Japanese Quality
- Depth tested to 500mt
- Pressure tested to 20kg
- Size 45mm x 14mm dia.
- Water Activated
- 30 hours Continuous use
- Comes with Batteries

BIT LIGHT



- Available in Green & White
- Highest Japanese Quality
- Depth tested to 500mt
- Pressure tested to 20kg
- Size 45mm x 14mm dia.
- Water Activated
- 30 hours Continuous use
- Comes with Batteries

IKE SHINKE SPIKE



- Humane Fish Spike, kills instantly
- Main Spike 50mm
- Extended Spike 220mm x 1.0 dia.
- Comes with Carabiner

QUATTRO LIGHT



- Available in Blue, Green, Red & Purple UV
- Highest Japanese Quality
- Depth tested to 1000mt
- Pressure tested to 80kg
- Size 101mm x 20mm dia.
- 4 different Light Functions
- Requires 1 x AAA Alkaline Battery

KIHO AIR BUBBLE



- Available in Blue, Green or White
- Highest Japanese Quality
- Depth tested to 800mt
- Pressure tested to 30kg
- Size 89mm x 15mm dia.
- Air Bubble Dazzler
- Comes with 3 x LR41 Batteries

C TYPE LIGHT



- Available in Green or Red
- Highest Japanese Quality
- Depth tested to 600mt
- Pressure tested to 60kg
- Size 128mm x 28mm dia.
- 2 Phases of Flashing Speed
- Comes with 3 x LR44 Batteries

L TYPE LIGHT



- Available in 1 LED Auto change
- Highest Japanese Quality
- Depth tested to 300mt
- Pressure tested to 50kg
- Size 128mm x 28mm dia.
- 1 Auto Strobe Light Function
- Comes with 1 x AA Alkaline Battery

A TYPE LIGHT



- Available in Blue, Green, Red & White
- Depth tested to 300mt
- Pressure tested to 30kg
- Size 62mm x 11mm dia.
- Water Activated
- 33 hours Continuous use
- Comes with Batteries

CHAP ON FLOAT



- Amazing running Float
- Available in Green or Red
- Size 37.5mm x 29mm dia.
- Weighs 12.5grams
- Visibility 100mt
- Water Activated
- Comes with 2 x LR41 Batteries

LED ROD LIGHTS



NEW COLOURS



Actual Size

- Available in **Sunset Red**, **Sea Green**, **Pink** or **White**
- Available in **Medium** and **Large**
- **MEDIUM:** 2.3 - 2.7mm Rod Tip
- **LARGE:** 2.8 - 3.2mm Rod Tip
- Highest Japanese Quality
- Super Bright and easy to use
- On / Off Switch
- Requires 1 x Lithium BR/CR425 Battery (**Available**)

CLIP ON LIGHTS



- Available in **Yellow**
- Available in **Medium**, **Large** & **X-Lge**
- **MEDIUM:** 1.8 - 2.3mm Rod Tip
- **LARGE:** 2.4 - 2.9mm Rod Tip
- **X-LGE:** 3.0 - 3.5mm Rod Tip
- Duration time 4 hours
- Safety clip eliminates falling off
- 1 Stick and Safety Clip per packet

KEMIHOTURA 37



Actual Size

- The Original Chemical Light
- Available in **Yellow** or **Red**
- Size 37mm x 4.5 dia.
- Visible range 30mt
- Duration time 4 hours
- Highest Japanese Quality
- 2 Sticks and 1 Tube per packet

KEMIHOTURA 25



Actual Size

- The Original Chemical Light
- Available in **Yellow** or **Red**
- Size 23mm x 2.9 dia.
- Visible range 15mt
- Duration time 3 hours
- Highest Japanese Quality
- 2 Sticks and 1 Tube per packet

CHEMI WIND



Actual Size

- Available in **Yellow** or **Red**
- Size 22mm x 2.2 dia.
- **Inserts into Soft Plastics**
- Duration time 2 hours
- Highest Japanese Quality
- 2 Sticks per packet

X-WING 90 SQUID



X-WING 90 / WAVE 65
with a 25mm Kemihotaru
Inserted

Fits a Kemihotaru 25mm Light inside



#118 #119 #121 #125

90mm 6grams 3pcs per pkt

The Lumica X-Wing Squid is a ultra realistic soft plastic Squid, designed, developed and **Made in Japan**. The X-Wing features a secondary slot that allows the angler to insert a **Kemihotaru 25mm light inside the body to allow it to glow** for added attraction. The X-Wing can be rigged with a lead weighted system with a treble, Carolina or Texas rigged with a Worm Hook or on a weighted Jighead. The X-Wing has a tantalising action that any predatory fish that feed on Squid, Cuttlefish or Octopus find irresistible and appealing.

WAVE 65 SQUID



#106 #107 #108 #110

65mm 3grams 3pcs per pkt

The Lumica Wave Squid is a ultra realistic soft plastic Squid, designed, developed and **Made in Japan**. The Wave features a secondary slot that allows the angler to insert a **Kemihotaru 25mm light inside the body to allow it to glow** for added attraction. The Wave can be rigged with a lead weighted system with a treble, Carolina or Texas rigged with a Worm Hook or on a weighted Jighead. The Wave has a tantalising action that any predatory fish that feed on Squid, Cuttlefish or Octopus find irresistible and appealing.

The Eureka "Bio-Lumen" Series of Jigs & Lures combines the most realistic 3D finish with incredible light emitting **BIO - LUMINESCENT** features, all in 1 lure. **LUMINESCENT, ULTRA UV & 3D REALISM**

Each Jig features quality fittings and components. They feature quality Mustad® 10827BLN Hooks and 200lb Kevlar that is also heat shrunk for added protection.

LUNATIC JIGS


Reverse Side View



- Pre-rigged with a Mustad® Assist hook
- UV Body
- **Glo Striped Body** (Reverse Side)
- 3D Realistic fish finish
- Rigged centre balanced
- Scalloped on one side to increase flutter on drop
- Sinks quickly without influences from tide

WEIGHT	LENGTH	HOOK SIZE
200gm	220mm	9/0 Assist
150gm	200mm	7/0 Assist

IMPACT JIGS


- Pre-rigged with Mustad® Assist hook
- UV Body
- **Glo Belly**
- 3D Realistic fish finish
- Rigged Weight on Tail
- Rounded on one side, Sliced on other side to increase flutter on drop
- Sinks quickly without influences from tide

WEIGHT	LENGTH	HOOK SIZE
180gm	200mm	8/0 Assist

The Eureka "Bio-Lumen" Series of Jigs & Lures combines the most realistic 3D finish with incredible light emitting **BIO - LUMINESCENT** features, all in 1 lure. **LUMINESCENT, ULTRA UV & 3D REALISM**

Each Jig features quality fittings and components. They feature quality Mustad® 10827BLN Hooks and 200lb Kevlar that is also heat shrunk for added protection.

LOCO JIGS


- Pre-rigged with a Mustad® Assist hook
- UV Body
- **Glo Body with Large Glow Eyes**
- 3D Realistic fish finish
- Rigged Weight on Tail
- Rounded on one side, Knife Cut on other side to increase flutter on drop
- Sinks quickly without influences from tide

WEIGHT	LENGTH	HOOK SIZE
200gm	180mm	8/0 Assist
160gm	170mm	7/0 Assist



Bottom View

PREY BAITS


Rigged with In-Line Hook

- Pre-rigged with Single In-Line hook
- UV Body
- **Glo Belly with Glow Eyes**
- 3D Realistic fish finish
- Ideal for Casting/Trolling and can also be used for Micro Jigging
- Body can be bent to shape to create a more vigorous action!

WEIGHT	LENGTH	HOOK SIZE
40gm	95mm	1/0 In-Line
60gm	110mm	2/0 In-Line

OCTANE JIGS



The Eureka Octane Jigs are a realistic exquisite Squid/Octopus imitation designed for slow pitched Jigging that have exceptional realism and a tantalizing action! Each lure features a Solid Ring with quality Dacron running to Twin Assist Hooks that feature ultra sharp points that have the fish hooking themselves. Most of the Jigs also feature a highly luminous body for added attraction.

Available in 50 & 100 grams

3D BAITFISH



All sizes in the 3D Baitfish come rigged with a quality In-Line Single Hook



The 3D Baitfish offer an extraordinary realistic Baitfish finish that is truly outstanding.

These lures can be used as a Micro Jig or as a Casting/Trolling lure.

The 3D Baitfish come rigged with an In-Line Single hook so it makes it harder for fish to throw the lure.

Available in 20, 40 & 60 grams

K.O. BAITZ



The Eureka K.O. BaitZ are an outstanding metal lure that have an enticing swaying action.

Eureka K.O. BaitZ also feature reflective prism for added attraction and outstanding glow in the dark bodies.

They are highly effective when cast or trolled at high speed. It can also be vertically jigged with a rip and drop action.

Available in 40 & 60 grams

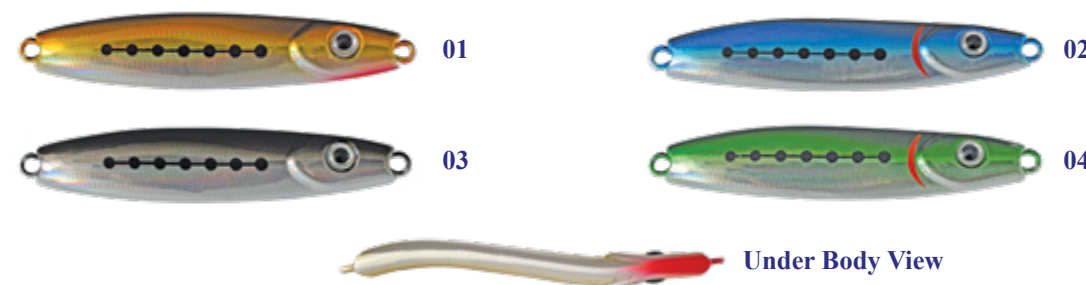
BOIL BAITZ



The Eureka Boil BaitZ are a traditional baitfish lure in improved colours that is highly effective when worked at high speed. They can also be carefully bent to increase the lures action.

Available in 20, 30 & 40 grams

ACTION BAITZ



The Action BaitZ have a vigorous fluttering action that many fish find appealing. They offer a truly amazing finish and it comes fitted with a VMC Permasteel Treble Hook. They are deadly on Salmon, Tailor, Bonito, Mackerel and Tuna.

Available in sizes 20, 30 & 45 grams

FLASHMASTERS



Classic chrome slice in an exciting range of new colours that emit a fantastic flash effect in the water.

Proven on many predatory & pelagic species.

Available in sizes 20, 30, 40 & 50 grams

SALTWATER LURE KIT

The Eureka Saltwater Lure kit offers all the Juro Ozpro Tackle Test teams favourite Eureka lures to suit the most commonly found saltwater fishing environments around Australia. These lure kits offer great value for money without compromising quality or fish catching ability. Ideal for Salmon, Tailor, Mackerel & Bonito.



IDEAL FOR THE HOLIDAY MAKER, BEGINNER & KIDS

JELLY VIBE 95



Eureka Jelly Vibe lures are made from a durable soft material and feature a balanced internal weight system, for a superior vibration and action on the drop and lift. The Jelly Vibe also feature a multi strand wired through construction and a holographic head for added attraction. They are very effective on Mulloway, Barramundi, Mangrove Jacks & Flathead

95mm 20 grams

JELLY VIBE 67



Eureka Jelly Vibe lures are made from a durable soft material and feature a balanced internal weight system, for a superior vibration and action on the drop and lift. The Jelly Vibe also features a holographic head for added attraction. They are highly effective on Bream, Bass, Estuary Perch, Flathead & Redfin

67mm 7 grams

ASSIST HOOKS

- 200lb Kevlar
- Mustad 4X Strong 10827 BLN Black Nickel hook
- 1.6mm welded ring
- Forged Stainless Steel ring
- Heat shrink rubber coated

SIZE	HOOK SIZE
9/0	9/0 Assist
8/0	8/0 Assist
7/0	7/0 Assist
6/0	6/0 Assist



LAZERS



The original Australian designed and developed lure that has been a favourite amongst Aussie anglers for many years. A versatile lure in a large range of colours and sizes that can be used for spinning, jigging or trolling for many fish species.

Available in sizes 15, 25, 35, 50, 70 & 90 grams

SNAPPER RIGS



SNAPPA FLASH RIG

Gamakatsu #5/0 Octopus Beak Hooks
Ideal for Snapper, Gummy Sharks, Mulloway, Surf Fishing & Reef Fishing.

WHIPPA SNAPPER RIG

Gamakatsu #6/0 or #4/0 Octopus Circle Hooks
Ideal for Snapper, Gummy Sharks, Mulloway, Surf Fishing & Reef Fishing.

BAIT RIGS



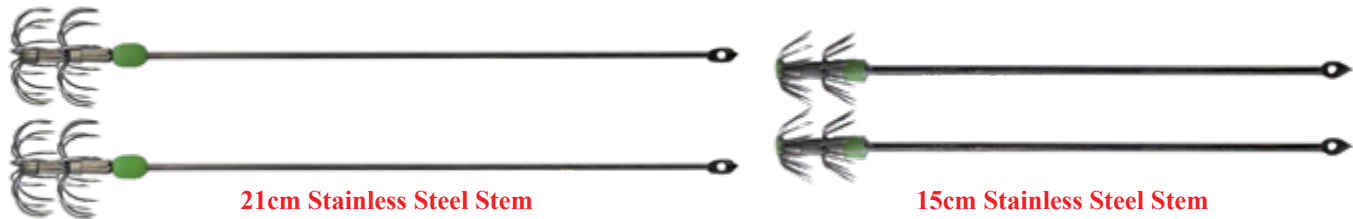
AURORA SABIKI RIG #8

Suitable for Yakkas, Slimies, Bonito & Mackerel

BAIT CHASER RIG #6

Suitable for Yakkas, Slimies, Bonito & Mackerel

METAL SQUID JIGS



21cm Stainless Steel Stem

15cm Stainless Steel Stem

Wire squid jig designed for use with baits such as Pilchards or Silver Whiting. Dual barbed.
2pcs per pkt

SURF POPPERS



Use in place of baited hook as a very effective attractor in the surf when chasing Australian Salmon and Tailor.
2pcs per pkt

LUMO SQUID



The Lumo Bottle Squid represent a Bottle Squid perfectly and feature a highly luminous glow body. 100mm
3pcs per pkt

MIMIC SKEETA



A superb surface walker with irresistible frog like kicking action. Deadly on Murray Cod, Bass and large Trout.
7cm FLOATING Surface Walker

MIMIC BUG



A miniature version of the Mimic Skeeta. Deadly on Bream, Bass, Estuary Perch and Trout.
4cm FLOATING Surface Walker

SAX SCENT 10ml



ABALONE
Garlic Flavour
With Purple & Blue Fleck

BLOODWORM
Fish Stimulates Flavour
With Red & Silver Fleck

CRAB
Crab Flavour
With UV Orange & Black Fleck

GOLD PRAWN
Prawn Flavour
With Gold Fleck

WASABI
Aniseed Flavour
With Green & Silver Fleck

Scent with Glitter added. Ideal small container that can be stored anywhere.

SAX SCENT 30ml with Carabiner



ABALONE
Garlic Flavour
With Purple & Blue Fleck

BLOODWORM
Fish Stimulates Flavour
With Red & Silver Fleck

CRAB
Crab Flavour
With UV Orange & Black Fleck

GOLD PRAWN
Prawn Flavour
With Gold Fleck

WASABI
Aniseed Flavour
With Green & Silver Fleck

Scent with Glitter added. Carabiner allows the angler to clip the scent onto a Shirt, Pants, Lanyard or Kayak

UV HOT SPOT 30ml



CHARTREUSE UV
Baitfish Flavour

ORANGE UV
Baitfish Flavour

PINK UV
Baitfish Flavour

Allows the angler to add a UV section on a Hard Bodied Lure, Soft Plastic or Squid Jig on the Underbelly, throat or where you want to add a UV finish. Carabiner allows the angler to clip the scent onto a Shirt, Pants, Lanyard or Kayak

A great Australian made and tested product. It has been developed and tested on Castaway Estuary Fishing Charters and is extensively used by Tournament anglers around Australia. It is ideal and suitable for Lures, Soft Plastics and Squid Jigs.

MAPSO®, the Lukris® house brand, has previously only been available in Spain and the surrounding area, but is now available in Australia. Known for their innovative ability and unique quality, Lukris® have been responsible since 1961 for producing some of the World's best known and most trusted brands. Since 1990 Lukris® made the famous Rublex® brand under license for Rublex® and in the mid 2000's it purchased the Iconic brand and now Owns, Makes and Distributes the Rublex® brand Worldwide. Ideally located in one of Spain's greenest areas on the banks of the Ebro River, it's the ideal testing ground for 'The World's most Successful Spinning Lures'

SAJA SPINNER



ACTUAL SIZES



The Mapso Saja is an updated version of one of the World's most popular spinning lures. With improved colours and finish that will attract fish and anglers alike!
 100% Perfect spinning action everytime
 Ideal for Trout, Redfin, Bass and other freshwater species. A proven winner of the highest quality!
 2pcs per packet

MODEL	WEIGHT	SIZE	QTY
SAJA #0	2.3gm	42mm	2 per pkt
SAJA #1	3.2gm	47mm	2 per pkt
SAJA #2	4.3gm	53mm	2 per pkt
SAJA #3	7.0gm	60mm	2 per pkt

MAPSO®, the Lukris® house brand, has previously only been available in Spain and the surrounding area, but is now available in Australia. Known for their innovative ability and unique quality, Lukris® have been responsible since 1961 for producing some of the World's best known and most trusted brands. Since 1990 Lukris® made the famous Rublex® brand under license for Rublex® and in the mid 2000's it purchased the Iconic brand and now Owns, Makes and Distributes the Rublex® brand Worldwide. Ideally located in one of Spain's greenest areas on the banks of the Ebro River, it's the ideal testing ground for 'The World's most Successful Spinning Lures'

VLASON SPINNER



A bell shaped spinner with a cog internally that creates a vibration as it spins through the water to attract fish from longer distances. It is also very effective in murky water.

100% Perfect spinning action everytime
 Ideal for Trout, Redfin, Bass and other freshwater species.
 A proven spinner of the highest quality!

2pcs per packet

MODEL	WEIGHT	SIZE	QTY
VLASON #1	4gm	50mm	2 per pkt

ACTUAL SIZES



DEVA SPINNER

A unique, modernized version of a famous style Redfin & Yellowbelly lure. Features a Red woolen fly on the treble hook for added attraction.
 100% Perfect spinning action everytime. A proven lure of the highest quality!

2pcs per packet

MODEL	WEIGHT	SIZE	QTY
DEVA #3	3gm	58mm	2 per pkt
DEVA #4	5.2gm	70mm	2 per pkt

DIGGER 25+



The Bushranger Digger is suitable For Murray Cod, Yellowbelly, and Barramundi. The design of the Bushranger Digger helps the lure from snagging with its large bib and flat body keeping the hooks away from snags. It is a superb lure for flat line trolling but can also be cast retrieved. The Bushranger Digger features a Super strong body with In-built Rattles and has a wide swaying action that fish find irresistible. It also features a Wire through body, Heavy duty split rings, Heavy duty VMC hooks, UV Eyes and an amazing paint finish.

8.5cm 27grams Floating Dives to 25ft +

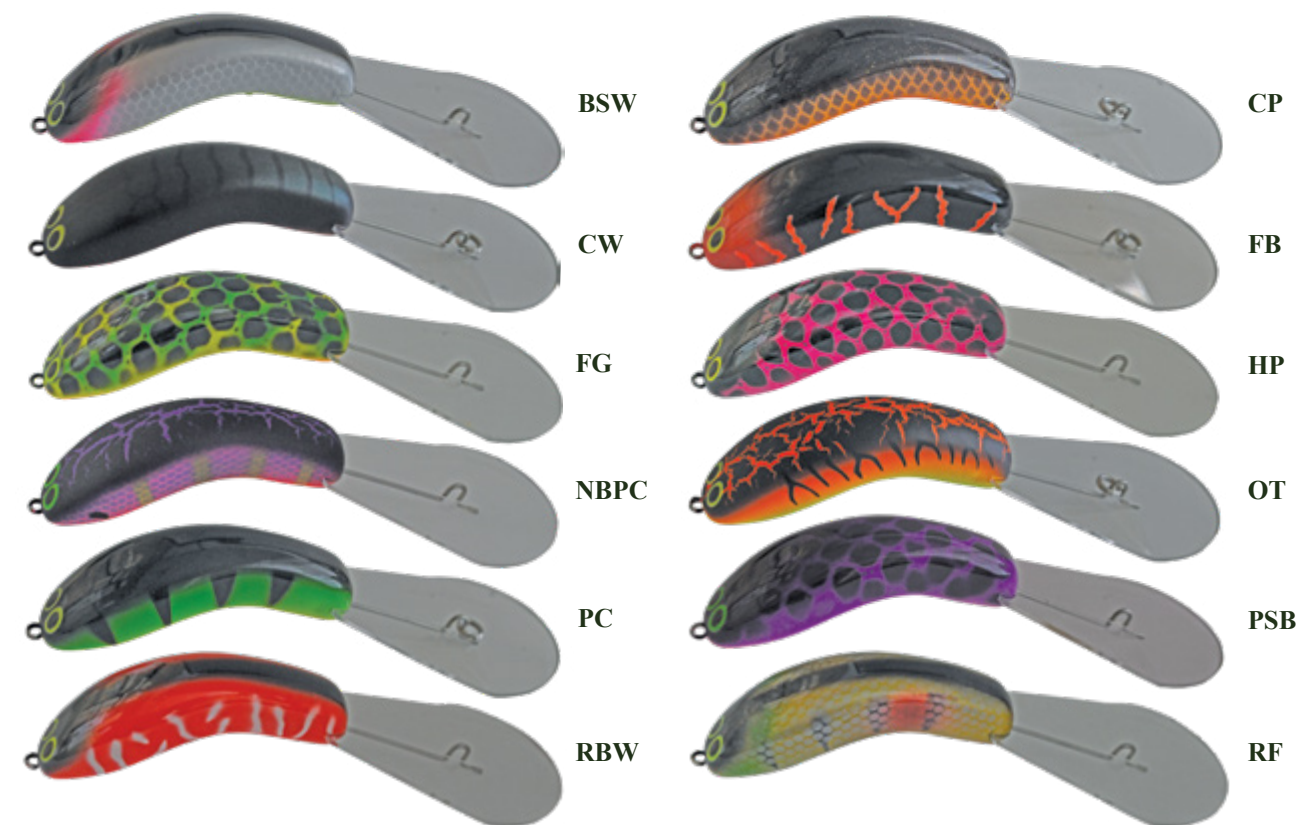
CICADA



The Bushranger Cicada is an outstanding realistic Cicada imitation surface walker that has an irresistible frog like kicking action. It features a holographic foil body and rear tail features for added attraction. This lure is dynamite at first and last light and going into the evening, it also works very well in overcast and humid conditions.

5.5cm 9grams Floating Surface Walker

DONGA 15+



The Bushranger Donga is suitable For Murray Cod, Yellowbelly, Barramundi and Mangrove Jacks. The design of the Bushranger Donga helps the lure from snagging with its large bib and flat body keeping the hooks away from snags. It is a deadly lure for cast retrieve fishing but can also be trolled. The Bushranger Donga features a Super strong body with In-built Rattles and has a wide swaying action that fish find irresistible. It also features a Wire through body, Heavy duty split rings, Heavy duty VMC hooks, UV Eyes and an amazing paint finish.

7cm 18grams Floating Dives to 15ft +

SPINNERBAITS 1/2oz



The Bushranger Spinnerbait has an enticing pulsating action that fish find very appealing with twin blades, one each of Willow and Colorado shape. The Bushranger Spinnerbaits feature the highest quality fittings and include Silicone Silk Cut Skirts, Rolling Swivel and a Wire Tied Skirt Holder. The Bushranger Spinnerbaits are suitable for Murray Cod, Yellowbelly, Bass & Redfin.

1/2oz

HEADSPINNERS



The Bushranger Headspinner features a realistic baitfish body for added weight and ultra realism. It also features a tail feather for added attraction and a perfect spinning action.

Size #1 4.6 grams

Size #2 6.5 grams

TURBO HEADS



The Bushranger Turbohead features a bell shaped fish head for added weight and ultra realism. It also features a tail feather for added attraction and a perfect spinning action.

4.5 grams

SONAR SPINNERS



A Trout spinner that emits an audible sound through body vibration. Also suitable for Redfin and Bass.

4 grams

ALPINE SPINNERS



A classic popular Trout spinner that has also proven deadly on Redfin and Bass.

3.5 grams

MARBLE SPINNERS



A popular sonic bladed lure. Painted body with black spots. Ideal Redfin, Trout & Yellowbelly lure.

11 grams

PERCH SPINNERS



A classic Redfin and Yellowbelly lure with a proven track record over many years.

5 grams

SONAR SPINNERS



A Trout spinner that emits an audible sound through body vibration. Also suitable for Redfin and Bass.

4 grams

ALPINE SPINNERS



A classic popular Trout spinner that has also proven deadly on Redfin and Bass.

3.5 grams

NEW

TOBY SPOON



A all time classic fish catching lure. Features a superb fluttering action in new fantastic colours. It features an In-Line Single hook that helps stop fish from throwing the hooks.

9 grams

NEW

RATTLIN' T

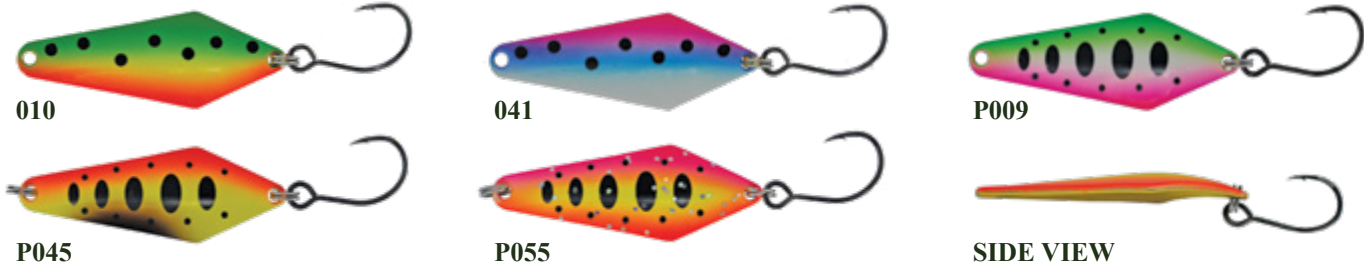


The Rattlin' T features a vigorous swaying action with an Internal rattle chamber. It features an In-Line Single hook that helps stop fish from throwing the hooks.

7 grams

HOVER SPOON

NEW

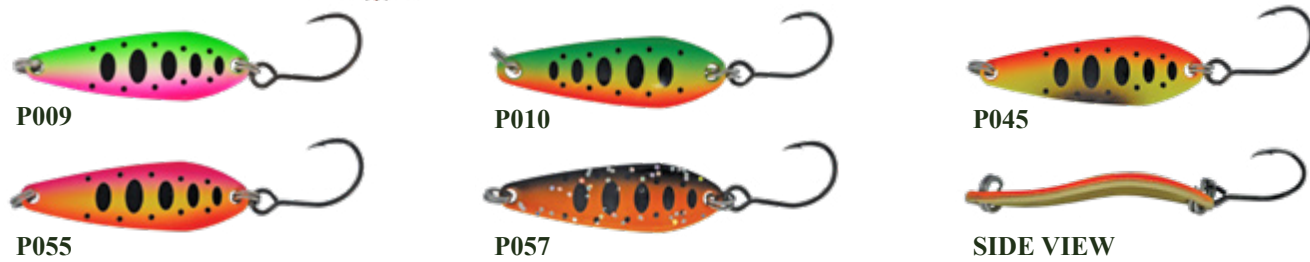


The Hover Spoon features a scalloped body that creates a vigorous swaying action. It features an In-Line Single hook that helps stop fish from throwing the hooks.

5.5 grams

MICRO SPOON

NEW

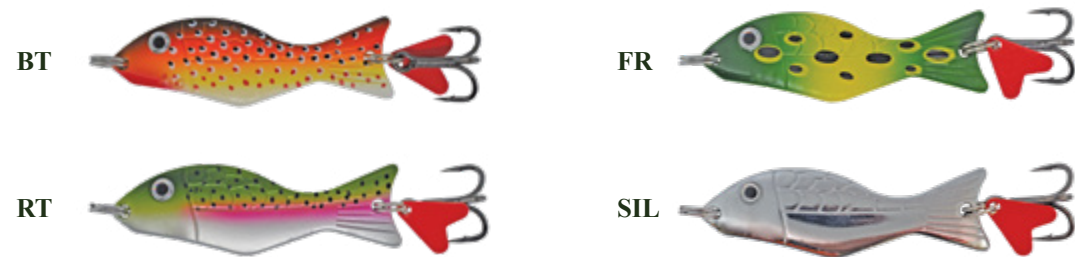


The Micro Spoon is an ultra light spoon that is ideal for small streams and has a fantastic flutter action. It features an In-Line Single hook that helps stop fish from throwing the hooks.

3.5 grams

WOBLERS

NEW



An all time classic lure including the red tag. New superb updated colours. Ideal for Salmon, Tailor, Trout & Redfin

7 grams

FRESHWATER LURE KIT

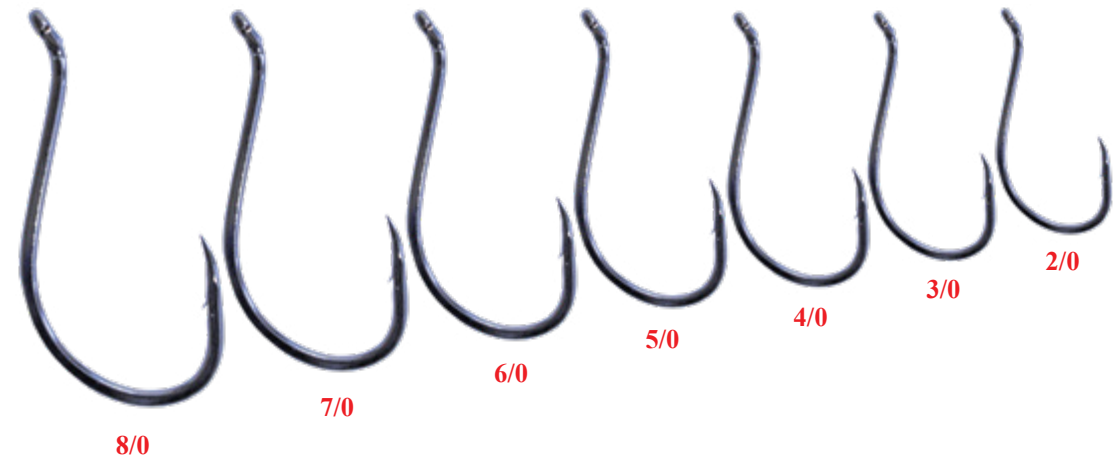
The Bushranger Freshwater Lure kit offers all of the Juro Ozpro Tackle Test teams favourite Bushranger lures to suit the most commonly found fish in freshwater fishing environments around Australia.

These lure kits offer great value for money without compromising quality or fish catching ability. Ideal for Trout, Redfin, Yellowbelly & Bass.



Daiichi Hooks of Japan were the first hook makers in the world to produce a coloured chemically sharpened hook, thanks largely to the input of the Team at Juro OzPro Tackle Australia. The Juro Team observed that local anglers targeting species such as Whiting often used red tubing or beads as an attractant, and approached Daiichi with a request to build that attraction into the hook itself. Daiichi responded by developing a coloured coating that was not only durable, but also had no adverse effects on the sharpness of the hook point like many of the thicker painted coatings can.

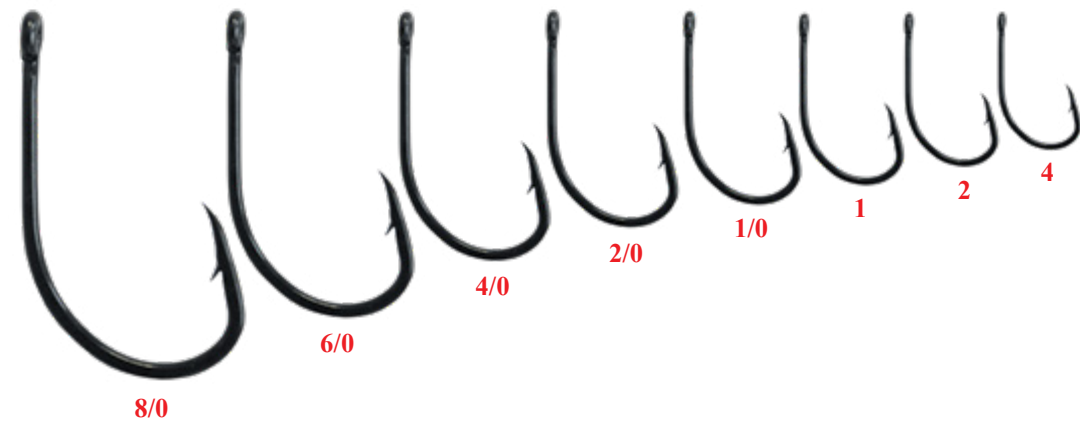
This innovative process was something that would change the manufacturing of hooks worldwide forever, as every other company soon realised the effectiveness of coloured chemically sharpened hooks and rushed to bring out copies. In spite of all of this added competition, Daiichi still manufacture the finest range of ultra-sharp chemically etched hook points in the World. Daiichi Hooks are still The World's Finest Quality Hi-Carbon Chemically Sharpened Hooks. Daiichi are the 'Premium Quality Japanese Boutique Hook Company'. 100% Made in Japan.



OCTOPUS BN

- Black Nickel
- 2X Strong
- Turned Up Eye, Offset Beak
- Sizes: 10/0 - 2/0
- Value Packs & Pre-Packs

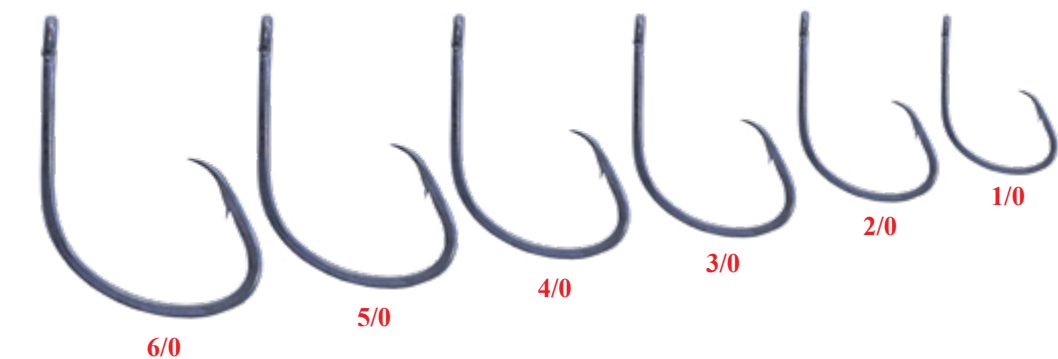
*Note 10/0 not pictured



BLACK BAITER

- Black
- 2X Strong
- Turned Up Eye, Offset Beak
- Sizes: 10/0 - 4
- Value Packs

*Note 10/0 not pictured

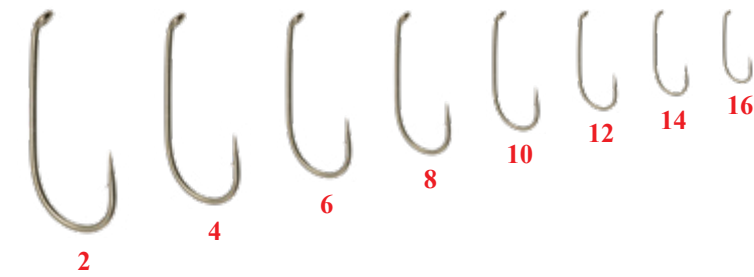
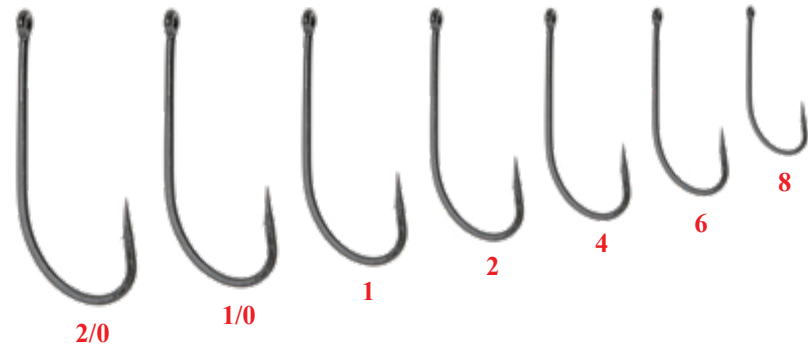


MUTSU CIRCLE

- Black Nickel
- Ultra Sharp
- Straight Eye, Offset Beak
- Sizes: 6/0 - 1/0
- Value Packs & Pre-Packs

O'SHAUGHNESSY

- Black
- 1X Strong
- O'Shaughnessy bend with a Straight Eye
- Sizes: 2/0 - 8
- Value Packs

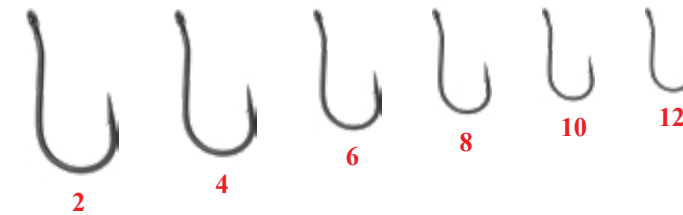
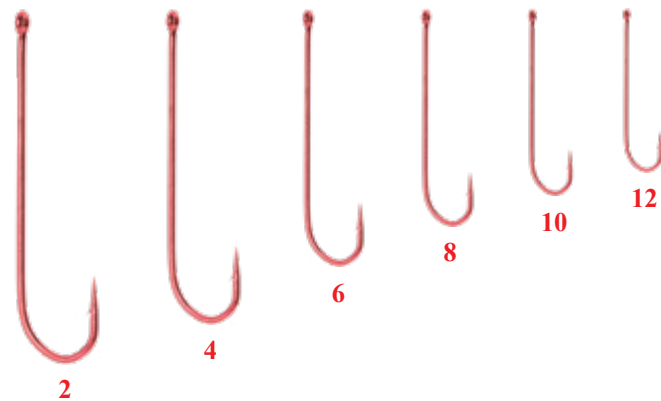


1550

- Bronze
- Sprout Bend
- Turned down eye
- Sizes: 2 - 16
- Wet & Dry Fly hook
- Value Packs

LONG SHANK R

- Bright Red
- 4X Long Shank
- Straight eye
- Sizes: 2 - 12
- Value Packs & Pre-Packs

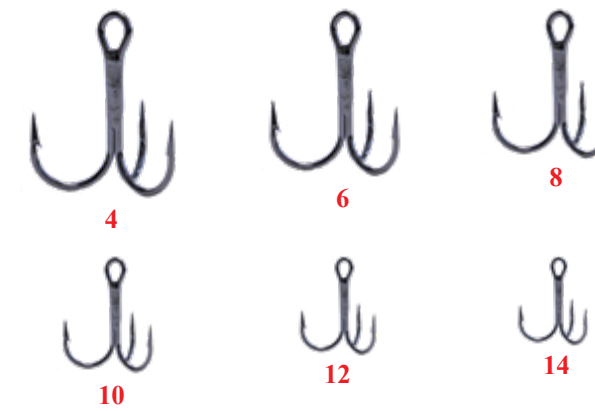
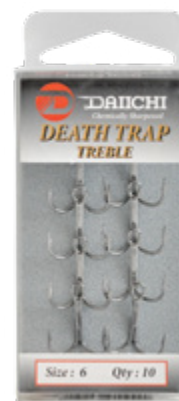
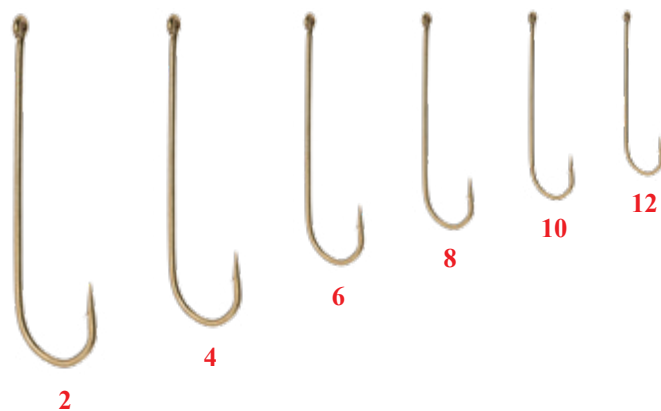


2171 - B

- Black
- The Ultimate Luderick and Mudeye Hook
- 1X Short Shank
- 20° Shank Bend
- Sizes: 2 - 12
- Value Packs & Pre-Packs

LONG SHANK BR

- Bronze
- 4X Long Shank
- Straight eye
- Sizes: 2 - 12
- Value Packs

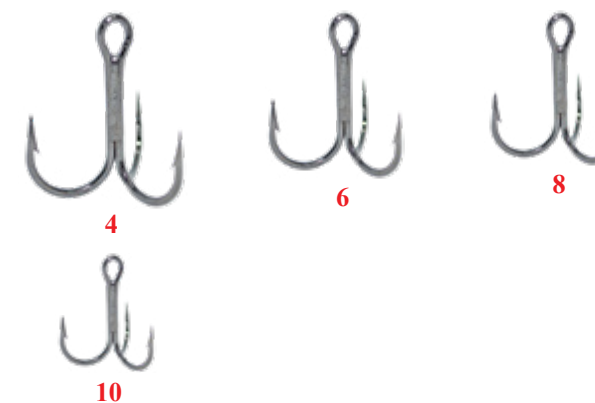
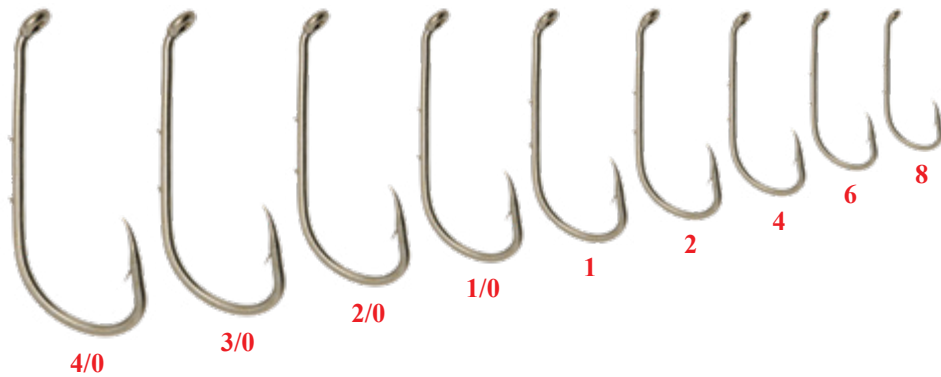


DEATH TRAPS

- Black Nickel
- Super Sharp Needle Points!
- 2X Strong
- Oblong eye
- Rounded Bends
- Sizes: 4, 6, 8, 10, 12 & 14
- Boxes

BAITHOLDER

- Bronze
- 2 Slices on the shank
- Turned down eye
- Sizes: 4/0 - 8
- Value Packs & Pre-Packs



DEATH TRAPS HD

- Black Nickel
- Super Sharp Needle Points!
- 3X Strong
- Oblong eye
- Rounded Bends
- Sizes: 4, 6, 8 & 10
- Boxes

Senshi hooks are produced using the finest quality 'Japanese' raw materials, made to the highest standard and 'Give You The Edge'

The range of hooks have **Chemically Sharpened Needle Points**, use high grade Carbon Steel and are all a Black Nickel finish.

BOXED HOOKS

OCTOPUS



- Black Nickel
- **2X Strong**
- Turned up Eye, Offset Beak
- Sizes: 8/0, 7/0 (20pcs)
6/0, 5/0 (25pcs)
4/0, 3/0 (30pcs)

BAITHOLDER



- Black Nickel
- **2 Slices in the Shank**
- Straight Eye, Offset Beak
- Sizes: 4/0, 2/0 (25pcs)
1/0, 2, 4, 6 (30pcs)

LONG SHANK



- Black Nickel
- **4X Long Shank**
- Straight Eye, Offset Beak
- Sizes: 2, 4, 6, 8, 10 & 12
- **30 pcs per packet**

FINESSE



- Black Nickel
- Straight Eye, with 2 Slices in the Shank
- Sizes: 1/0, 1, 2, 4, 6 & 8
- **30 pcs per packet**

SPECIALIST HOOKS

G-POINT ISEAMA

Senshi G-Point hooks are the next generation of high quality **Chemically sharpened hooks**.

The G-Point Iseama Pro series hooks are extremely strong and offer no extra coating over the hook point itself that gives you the **Ultimate edge** to your hook, creating the most razor sharp hook point produced!



ACTUAL SIZES

- Black Nickel with Gold Points
- **2X Strong**
- Straight Eye, Straight Beak
- Sizes: 2 - 12
- **Pre Pack, 10pcs per pkt**



Senshi G-Point Hook Packaging

Senshi hooks are produced using the finest quality 'Japanese' raw materials, made to the highest standard and 'Give You The Edge'

The range of hooks have **Chemically Sharpened Needle Points**, use high grade Carbon Steel and are all a Black Nickel finish.

PRE PACK HOOKS

LIVE BAIT



- Black Nickel
- **6X Strong**, Heavy Duty
- Straight Eye, Straight Beak
- Sizes: 10/0 - 7/0
- **Pre Pack, 5pcs per pkt**

O'SHAUGHNESSY



- Black Nickel
- **2X Strong**
- Straight Eye, Straight Beak
- Sizes: 2/0 - 8
- **Pre Pack, 10pcs per pkt**



Senshi Pre Pack Hook Packaging

OCTOPUS



- Black Nickel
- **2X Strong**
- Turned up Eye, Offset Beak
- Sizes: 8/0 - 1/0
- **Pre Pack, 10pcs per pkt**

LONG SHANK



- Black Nickel
- **4X Long Shank**
- Straight Eye, Offset Beak
- Sizes: 2 - 12
- **Pre Pack, 10pcs per pkt**

WIDE GAPE



- Black Nickel
- **6X Strong**, Heavy Duty
- Straight Eye, Straight Beak
- Sizes: 4/0 - 6
- **Pre Pack, 10pcs per pkt**

MUTSU CIRCLE



- Black Nickel
- **2X Strong, Super Sharp!**
- Straight Eye, Straight Beak
- Sizes: 6/0 - 6
- **Pre Pack, 10pcs per pkt**

BAITHOLDER



- Black Nickel
- **2 Slices in the Shank**
- Straight Eye, Offset Beak
- Sizes: 6/0 - 10
- **Pre Pack, 10pcs per pkt**

FINESSE



- Black Nickel
- Straight Eye, with 2 Slices in the Shank
- Sizes: 2/0 - 10
- **Pre Pack, 10pcs per pkt**

CUSTOM RIGS

CUSTOM RIGS



WHITING RIG
SR02

- Paternoster Rig
- #6 Long Shank Hooks
- Red Beads
- 1oz Bomb Sinker

WHITING CIRCLE RIG
SR04

- Paternoster Rig
- #4 Mutsu Circle Hooks
- Red Beads
- 1oz Bomb Sinker

FLATHEAD RIG
SR06

- Paternoster Rig
- #1/0 Baitholder Hooks
- Red Tubing
- 1oz Bomb Sinker

REEF/GUMMY RIG
SR08

- Paternoster Rig
- #8/0 Octopus Hooks
- 60lb Trace material
- Lumo Squid Baits

RUNNING SNAPPER RIG
RIG SR20

- Running Sinker Rig
- 1mt Trace
- 2 x 5/0 Octopus Hooks
- #1 Ball Sinker

SURF RIG
SR1605

- Paternoster Rig
- Simply Clip on Hooks and Sinker for your target species

WIRE FISHING RIG
SR1866

- Paternoster Rig
- Simply Clip on Hooks and Sinker for your target species

DEEP SEA RIG
SR5060

- Paternoster Rig
- Simply Clip on Hooks and Sinker for your target species



LIGHT SURF RIG
SR10

- Paternoster Rig
- #2/0 O'Shaughnessy Hooks
- 3oz Star Sinker

RUNNING SINKER RIG
SR12

- Running Sinker Rig
- 1mt Trace
- #4 Baitholder Hooks
- #1 Ball Sinker

SNAPPER RIG
SR14

- Paternoster Rig
- #5/0 Mutsu Circle Hooks
- 60lb Trace material
- 4oz Snapper Lead

NATIVE RIVER RIG
SR16

- Paternoster Rig
- Wide Gape Hooks
- Red Beads
- 1oz Bomb Sinker



Senshi Swivel Packaging

BARREL



SIZE	RATING
2	90lb
4	70lb
6	50lb
8	40lb
10	30lb

SNAP



SIZE	RATING
2	70lb
4	55lb
6	45lb
8	35lb
10	25lb

CROSSLINE



SIZE	RATING
4	70lb
6	50lb
8	40lb

Highest Quality Black Coated Brass Swivels. Tested to stringent Standards.
10pcs per packet, 10 packets per outer

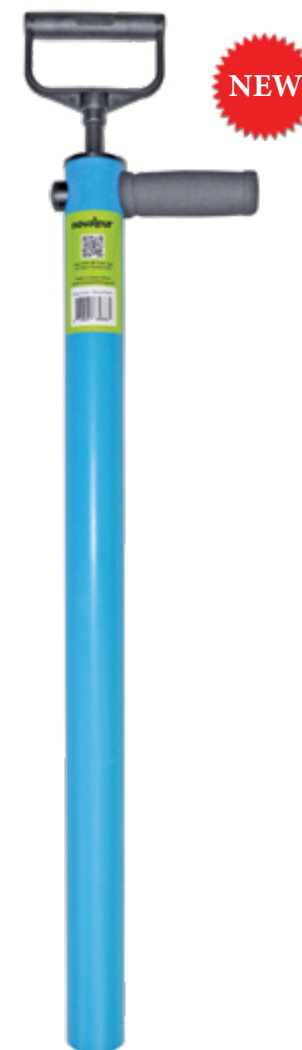
Senshi Custom Rigs are designed for the Australian angler using the most proven and common rigs for Australia's favourite fish species and fishing locations. Senshi Custom Rigs feature quality terminal tackle fittings and are all tied with specialized expert knots.

EGI PRO SQUID JIGS


Senshi Egi Pro Series jigs are advanced Japanese designed Egi jigs. Each jig is perfectly weight balanced for a precise lifelike swimming action with a high quality lead keel. Senshi Egi Pro Series Jigs feature High quality cloth materials, Oversized Eyes, Foil Bodies, UV finishes that attract Squid and can be recharged with any light source such as a torch or camera flash and have super sharp nickel prongs.

Size: 3.5 Sink Rate: 3 seconds per metre
 Size: 3.0 Sink Rate: 4 seconds per metre
 Size: 2.5 Sink Rate: 5 seconds per metre

*A Heavy Duty Bait Pump that will last Lifetime.
 Handmade in South Africa to the highest standards!*

PVC DELUXE


- Super Light Weight!
- PVC Body Tube
- Aluminium Body Handle (Anodised)
- Foam Grip on Handle
- Unique Novatuer Shaft Handle (Glass- Filled Nylon)
- Standard Screw Assembly
- Polyethylene Bush
- 304 Stainless Steel 8mm Shaft
- 304 Stainless Steel 8mm Suction Kit Components
- 20mm High Performance Sponge Suction Plug
- Body Tube Dia. 50mm / 2"
- Body Tube Length 735mm / 29"
- Total Pump Length 865mm / 34.5"
- Pump Weight 0.85kg / 1.9lb
- Cartons of 8

ALUMINIUM


- Super Light Weight!
 Half the weight of a Stainless Steel Pump!
- Aluminium Body Tube (Anodised)
- Aluminium Body Handle (Anodised)
- Anodised Blue
- Foam Grip on Handle
- Unique Novatuer Shaft Handle (Glass- Filled Nylon)
- Standard Screw Assembly
- Polyethylene Bush
- 304 Stainless Steel 8mm Shaft
- 304 Stainless Steel 8mm Suction Kit Components
- 40mm High Performance Sponge Suction Plug
- Body Tube Dia. 50mm / 2"
- Body Tube Length 735mm / 29"
- Total Pump Length 865mm / 34.5"
- Pump Weight 1kg / 2.2lb
- Cartons of 8

HEAVY DUTY STAINLESS STEEL


- Extra Heavy Duty!
 Built to Last!
- 304 Stainless Steel Body Tube
- 304 Stainless Steel Body Handle
- Foam Grip on Handle
- Unique Novatuer Shaft Handle (Glass- Filled Nylon)
- Heavy Duty Welded Assembly
- Polyethylene Bush
- 304 Stainless Steel 8mm Shaft
- 304 Stainless Steel 8mm Suction Kit Components
- 40mm High Performance Sponge Suction Plug
- Body Tube Dia. 50mm / 2"
- Body Tube Length 735mm / 29"
- Total Pump Length 865mm / 34.5"
- Pump Weight 1.9kg / 4.2lb
- Cartons of 8

*Designed to Pump Worms, Prawns, Bass Yabbies (Nippers) and Shrimp on Sand & Mud Flats.
 A Heavy Duty Bait Pump that will last Lifetime!*

Victory Knives have been Made in New Zealand by E. Goddard Ltd, for over 80 years. Victory Knives have gained a reputation for superior quality, and are used extensively in New Zealand and Australia by leading abattoirs and fish processing plants. The Victory Stainless Steel blade has a sub zero (-78oC) quench after hardening. This particular process produces a strong, hard and wear resistant blade with improved edge retention. It also produces a finer grain and this is believed to be the reason that Victory Knives are less prone to corrosion and maintaining its edge.

V5 / 7000 / 15 / 115P



Flex Straight Fillet 15cm

V2 / 7000 / 18 / 115P



Flex Straight Fillet 18cm

V3 / 507 / 18 / 115P



Fish Boning Knife 18cm

V5 / 512 / 18 / 115P



Super Flex Fillet 18cm

V2 / 508 / 20 / 115P



Straight Fillet 20cm

V2 / 150 / 22 / 115P



Fillet Knife (Diogene) 22cm

V2 / 151 / 22 / 115P



Thin Fillet Knife 22cm

V2 / 506 / 22 / 115P



Narrow Fish Fillet 22cm

V2 / 720 / 13 / 115P



Narrow Curved Boner 13cm

V2 / 720 / 15 / 115P



Narrow Curved Boner 15cm

V2 / 201 / 13 / 115P **NEW**



Sheep Skinning Knife 13cm

V2 / 201 / 15 / 115P **NEW**



Sheep Skinning Knife 15cm

V2 / 505 / 25 / 115P



Curved Fillet Knife 25cm

S4 / 01 SHEATH



Fits all Victory Knives (except 25cm size)

VICTORY STEELS



- VTI 40 Super Fine Steel 30cm
- VTI 41 Smooth Steel 30cm
- VTI 40/1 Super Fine Steel 35cm

FISH SET #1

NEW



Contains:

- Victory V5/722/13/115
- Victory V5/7000/15/115
- Victory V5/512/18/115
- Victory V3/506/20/115
- EZE - D5F Steel
- Victory TI65 Wrap
- VicFis 1 (Inland)

FISH SET #2

NEW



Contains:

- Victory V2/7000/18/115
- Victory V3/506/20/115
- Victory V2/150/22/115
- Victory V2/505/25/115
- EZE - D5F Steel
- Victory TI65 Wrap
- VicFis 2 (Offshore)

ULTIMATE TUNA SET!

NEW



Contains:

- Victory V2/506/22/115
- Victory V2/507/17/115
- Victory V2/508/20/115
- Victory V2/310/30/115
- Victory T1-44 Steel
- Victory TI65 Wrap
- VicFis 3 (Kai Ika - Tuna)

FISH SET #3 (Kai-Ika Tuna)



Eureka Slider Knives are made using high grade material. Each Eureka Slider Knife features a super tough **PTFE COATED** 440 Stainless Steel flexible blade, that glides effortlessly through all skin and flesh. Non Stick, no stains, and resists rust and attack from almost all chemicals. Each Knife features a soft moulded rubber handle with a finger guard for added protection and they all come with a durable sheath with belt strap for added safety and blade protection.

SLIDER 6" STRAIGHT

- 6" Straight Flex Blade
- **PTFE COATED** Blade
- 440 Stainless Steel Blade
- Soft Moulded Handle
- Nylon Sheath with Belt Strap



SLIDER 7" STRAIGHT

- 7" Straight Flex Blade
- **PTFE COATED** Blade
- 440 Stainless Steel Blade
- Soft Moulded Handle
- Nylon Sheath with Belt Strap



SLIDER 7" CURVED

- 7" Curved Flex Blade
- **PTFE COATED** Blade
- 440 Stainless Steel Blade
- Soft Moulded Handle
- Nylon Sheath with Belt Strap



Eureka Hunting products offer a range of Fishing Knives, Hunting Knives, Folding Knives and Hunting Accessories at extremely affordable pricing without compromising on quality and reliability. We search the World to find outstanding Fishing & Hunting products then test each product for quality, durability and performance before releasing them onto the Australian market.

PRO CERAMIC



- Sharpens Knives, Tools & Scissors
- Tungsten Carbide Sharpener
- Ceramic Fine Hone and Buffer
- Non Slip Base
- **ESP121**

PRO CERAMIC



- Sharpens Knives & Scissors
- Tungsten Carbide Sharpener
- Heavy Duty Finger Guard
- **ESP119**

RAZORBACK SAW

- 16" Overall Length
- 7.8" Blade
- 3CR13 Satin Blade
- Soft Rubber Handle
- **EFRBS**



HOGWILD PIG STICK

- 13.5" Overall Length
- 8" Blade
- 4mm Thick Satin Blade
- ABS Handle
- **EHSS**



BUFFALO

- 12" Overall Length
- 7.5" Blade
- 3CR13 Satin Blade
- Aluminium & Wood Handle
- **EH311**



SANTA FE

- 11.75" Overall Length
- 6.25" Blade
- 3CR13 Satin Blade
- Wood & Pearl Handle
- **EH051**



BEARTOOTH

- 11.5" Overall Length
- 6" Blade
- 3CR13 Satin Blade
- Imitation Bone Handle
- **EH053**



BIGHORN

- 11" Overall Length
- 6" Blade
- 3CR13 Satin Blade
- Wood Handle
- **EH120**



YUKON

- 10.75" Overall Length
- 6" Blade
- 3CR13 Satin Blade
- Wood Handle
- **EH113**



SURVIVOR

- 10.5" Overall Length
- 6" Blade
- 3CR13 Satin Blade
- Soft Rubber Handle
- **EH057**



BRONCO

- 10.25" Overall Length
- 5.75" Blade
- 3CR13 Satin Blade
- Aluminium & Wood Handle
- **EH078**



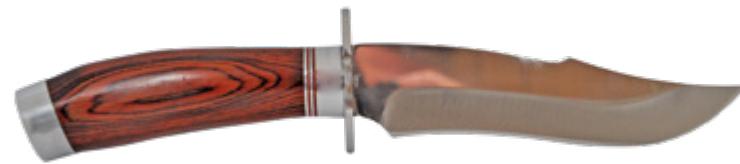
BOWIE

- 10.25" Overall Length
- 5.75" Blade
- 3CR13 Satin Blade
- Aluminium & Wood Handle
- **EH067**



STURGIS

- 10.25" Overall Length
- 5.25" Blade
- 3CR13 Satin Blade
- Aluminium & Wood Handle
- **EH030**



HIGHLANDS

- 9.7" Overall Length
- 4.6" Blade
- 3CR13 Satin Blade
- Metal/Wood Handle
- **EH069**



MONTANA

- 9" Overall Length
- 5" Blade
- 3CR13 Satin Blade
- Imitation Bone Handle
- **EH190**



TROPHY

- 9" Overall Length
- 4" Blade
- 3CR13 Satin Blade
- Imitation Bone Handle
- **EH071**



GUTVISION

- 8" Overall Length
- 4" Blade
- 3CR13 Satin Camo Blade
- Synthetic ABS Camo Handle
- **EH074**



HOMESTEADER

- 8" Overall Length
- 3.25" Blade
- 3CR13 Satin Blade
- Timber Handle
- **EH014**



BUSHMAN

- 7.75" Overall Length
- 3.5" Blade
- 3CR13 Mirror finish Blade
- Wood Handle
- **EH028**



COWEE COMBO

- Perfect Knife Combo Set
- 2 Tone 3CR13 Satin Blades
- 12" Overall with a 7" Blade
- 8.5" Overall with a 5" Blade
- Cord Handles
- Nylon Pouch with Belt Clip
- **EHCC**



BLACKFOOT

7.5" Length 3CR13 Blades
Synthetic Plastic Handle **EF044**



STOCKMAN 3UP

7.5" Length 3CR13 Blade
Wood Handle **EF53**



APACHE

7.7" Length 3CR13 Blade Alum/Wood Handle **EF019**



CAPOTE

6.5" Length 3CR13 Blade Metal/Wood Handle **EF054**



COYOTE

8" Length 3CR13 Blade Aluminium Handle **EF400**



HUNTSMAN

7" Length 3CR13 Blade ABS Tree Camo Handle **EF184**



MUSTER WALNUT

8.5" Length 8CR13 Stainless Blade Walnut Handle **EF8CR - W**



NEVADA

7.75" Length 3CR13 Stainless Blade Colourwood Handle **EF041**



BLACK HILLS

7.75" Length Titanium Damascus Blade Wood Handle **EF192**



COLORADO

8.25" Length 3CR13 Blade ABS Leaf Camo Handle **EF196**



DAKOTA

7.75" Length 3CR13 Blade Wood Handle **EF191**



LAKOTA

7.8" Length 3CR13 Blade Wood Handle **EF031**



NATCHEZ

6.75" Length 3CR13 Blade Metal/Wood Handle **EF055**



OATMAN

7.75" Length 3CR13 Blade Metal/Wood Handle **EF363**



RODEO

7.5" Length 3CR13 Blade Metal/Wood Handle **EF312**



STOCKMAN 42

7.25" Length 3CR13 Blade Wood Handle **EFS1B**



SWAGMAN

7.7" Length 3CR13 Blade Alum/Wood Handle **EF043**



UTAH

7.75" Length Tree Camo Blade ABS Leaf Camo Handle **EF013**



YELLOWSTONE

8" Length Titanium Damascus Blade Tigerwood Handle **EF195**



STOCKMAN 35

5.75" Length 3CR13 Blade Wood Handle **EFS1A**



STOCKYARD

8" Length 3CR13 Blade Wood Handle **EFSY**



TACTICO

8" Length 3CR13 Blade ABS Leaf Camo Handle **EF117**



WYOMING

8" Length 3CR13 Blade Alum/Wood Handle **EF063**



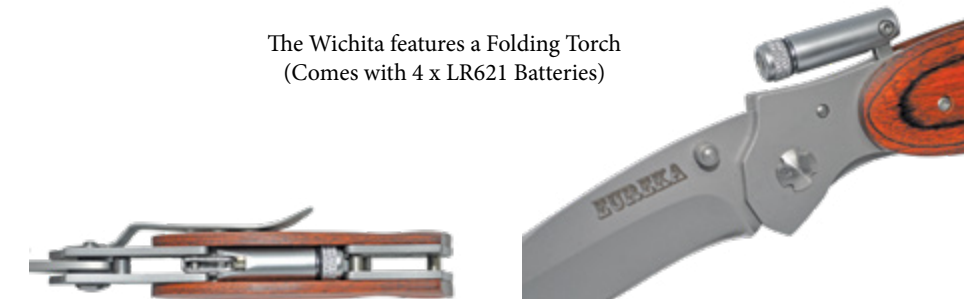
NEW

WITCHITA

8" Length 3CR13 Blade Alum/Wood Handle **EF341**



The Wichita features a Folding Torch
(Comes with 4 x LR621 Batteries)



FOLDING PICK / SHOVEL

- 41cm Overall with a 28.5cm Handle
- Shovel Head size 12.5cm x 9.7cm
- 2 pce Handle with Screw Joint
- Serrated Edge on one side
- Bottle Opener
- Camo Canvas Pouch
- **EHFPS**



P4000 SPOTLIGHT CAMO

NEW



- **Rechargeable** 4500 Lumens Cree Spotlight with Lithium Battery
- Up to 4500 lumens, Up to 450 mt distance
- Shatterproof Poly Carbonate lens
- Detachable **Green & Red** Filtered Lenses Included
- M8 Nut for Tripod mounting
- Comes with 240V AC & 12V car charger
- **P4000 CAMO**

GUN CLEANING KIT

NEW



Quality Gun Cleaning Kit that includes everything you need to clean your Firearm. Comes with Rod, Mop, Brushes, Oil bottle, Brushes and includes a Carry Case

- **SHOT GUN - GKT-12G**
- **RIFLE - GKT-22**

BORE BUDDIES



- Integral Bronze Brush - contained within pull through rope
- Convenient to stow and go
- Quick and simple to use
- Totally REUSEABLE
- Available in 12 Gauge, .22 Caliber, .38 Caliber, .243 Caliber & .270 Caliber

FLY / MOZZIE VEIL



Ideal for the Australian Summer Keeps Flies and Mozzies at bay!

RE - CHARGEABLE LED PRAWN LIGHT

Super Bright Up to 500 Lumens!

NEW



- 5 watt **ULTRA BRIGHT CREE** Technology LED globe
- **USB Re-Chargeable** (C Type)
- LED Charging Indicator & Battery Indicator
- Up to 5 hours run time
- Waterproof with 'O' ring seals
- No need for wires or battery packs
- Lightweight
- **PRLNC-R**

CREE LED PRAWN LIGHT

Bright Up to 250 Lumens!



- 3 watt **ULTRA BRIGHT CREE** Technology LED globe
- Comes with 6 x AA batteries
- Waterproof with 'O' ring seals
- No need for wires or battery packs
- Lightweight
- **PRLNC**

ROD HOLDERS



ARH4



ARHL4

- Aluminium Rod Holder, holds 4 Rods
- Fitted with end caps to protect Rods & Reels
- Welded, all Aluminium construction
- Bull Bar Rod Holder with U Bolt Mounting **ARH4**
- Slots for Knives, Pliers and Tools on **ARHL4**
- Available in **CHROME**
- **ARH4** Dimensions (W) 420mm x (H) 160mm
- **ARHL4** Dimensions (W) 450mm x (H) 450mm

DELUXE WADERS



- PVC Deluxe Wader
- Deep Cleated Sole
- Waist Belt with Clip
- Breathable Mesh Lining
- Internal Pockets
- Padded Knees and Buttocks
- Available in sizes: 7, 8, 9, 10, 11, 12 & 13

HH1500 TORCH



- CREE XHP50.2 20 watt LED
- High powered LED 300mt range
- 2 Zoom modes
- Water resistant
- Comes with 6 AA Batteries
- **HH1500**

MEGA T6 TORCH



- High powered LED 200mt range
- 5 Function switch
- 5 Zoom modes
- Water resistant
- Comes with 3 AAA Batteries
- **HHT6**

HHXPE2 TORCH



- High powered CREE LED (Up to 200 lumens)
- Zoom lens 50 to 300mt
- Comes with 3 AAA Batteries & Pouch
- Available in Black, Blue & Gunmetal Grey
- **HHXPE2**

HHC0B TORCH



- High powered COB LED
- Wriststrap
- Comes with 3 x AAA Batteries
- **HHC0B**

FLOATING TORCH SML



- 3 Super bright LED's
- Floating, Waterproof and with Wriststrap
- Comes with 2 x AA Batteries
- **HHWFA**

UV TORCH



- 9 Super bright LED's
- Keeps your Squid Jig glowing
- Wriststrap
- Comes with 3 x AAA Batteries
- **HHUV**

ZFL TORCH



- High powered 3 watt CREE LED
- Zoom function, Adjustable head
- Convenient fits on Cap, Pocket or Belt Clip
- Comes with 3 x AAA Batteries
- **ZFL**

FLOATING TORCH LGE



- 5 Super bright LED's
- Floating, Waterproof and with Wriststrap
- Comes with 2 x C Batteries
- **HHWFC**

HD580 HEADLAMP



- Super bright CREE XP3 watt LED
- 580 lumens output, 250mt Zoom function
- Includes 3 x AA Batteries
- **HD580**

HD500 HEADLAMP



- Super bright CREE 5 watt LED
- 500 lumens output, with Motion Sensor
- Includes Lithium Battery, Re-Chargeable
- **HD500R**

COB POCKET TORCH



- Super Bright up to 35 Lumen light
- Simply clips on any 9V Battery
- **9VCOB**

CREE LED HEADLAMP



- Ultra bright 3 watt CREE LED
- 200mt Zoom function
- Includes Lithium Battery, Re-Chargeable
- **HDZR**

HDC0B HEADLAMP



- Super bright 3 watt COBLED
- 180 lumens output, 50mt Beam
- Includes 3 x AAABatteries
- **HDC0B**



HD350 COB HEADLAMP



- Super bright COBLED 350 Lumens
- Motion Sensor for hand free operation
- USB Charging
- **HDC0B**

BATTERIES



- Quality Alkaline Batteries
- Ideal for all Perfect Image products and devices
- Available in AAA, AA, C, D & 9V sizes

1500 LUMEN SPOTLIGHT



- Rechargeable 3 x 5 watt T6 Cree Spotlight
- Up to 1500 lumens, Up to 500mt distance
- Shatterproof Poly Carbonate lens
- Rubberized Lens Protector
- Comes with 240V AC & 12V Car charger
- **HHSPT-1500R**

550 LUMEN SPOTLIGHT



- 5 watt Cree Spotlight
- Up to 550 lumens, Up to 500mt distance
- Shatterproof Poly Carbonate lens
- Rubberized Lens Protector
- Wrist Strap with In-Built Whistle
- Operates on Rechargeable Lithium Batteries
- **HHSPT-550R**

300 LUMEN SPOTLIGHT



- 3 watt Cree Spotlight
- Up to 300 lumens, Up to 350mt distance
- Shatterproof Poly Carbonate lens
- Rubberized Lens Protector
- Wrist Strap with In-Built Whistle
- Operates on 3 x AA Batteries (Included)
- **HHSPT-300B**

P4000 SPOTLIGHT



- **Rechargeable** 4000 Lumens Cree Spotlight with Lithium Battery
- Up to 4000 lumens, Up to 400 mt distance
- Shatterproof Poly Carbonate lens
- Detachable Green & Red Filtered Lenses Included
- M8 Nut for Tripod mounting
- Comes with 240V AC & 12V car charger
- **P4000**

P1600 SPOTLIGHT



- **Rechargeable** 1600 Lumens Cree Spotlight with Lithium Battery
- Up to 1600 lumens, Up to 600 mt distance
- Shatterproof Poly Carbonate lens
- Detachable Green & Red Filtered Lenses Included
- M8 Nut for Tripod mounting
- Comes with 240V AC & 12V car charger
- **P1600**

MARINE SPOTLIGHT



- 25 watt 1050 Lumen spot and flood beam
- 40 metre distance
- Suitable for marine and Automotive applications
- Die cast aluminium waterproof construction
- Operating voltage 9-36 volt DC
- **FLDS25W**

UNDERWATER LIGHT



- Submersible **GREEN** Underwater Light
- Submersible up to 5 metres IP68
- Built in Metal Sinker
- Powered by 12V DC
- Heavy Duty 6mt Cable with ON/OFF Switch
- Built in Hanging Hook
- **LFL**

LTNF MINI LANTERN



- 260 lumen COB LED
- 360 degrees of light
- Collapsible design, very compact
- Comes with 3 x AA Batteries
- **LTNFMINI**

SPOTLIGHT



- 24 watt Spotlight
- 76 metre distance
- 10 degree angle
- Cast Aluminium construction
- Operating voltage 9-36volt DC
- Available in Black or White
- **FLD24W - ROUND**
- **FLD24W - SQUARE**

MULTI WORKLIGHT



- 30 watt Worklight up to 3000 lumens
- USB Powerbank, Ideal for charging
- 360 degree Multi Angle Positioning
- Re-Chargeable and Cordless
- Magnetic mounting
- 3 Mode Switch
- **WL3000R**

LIGHT / POWERBANK



- 10 watt Worklight up to 1000 lumens
- Powerbank, Ideal for charging phones, etc
- 360 degree Multi Angle Positioning
- Re-Chargeable and Cordless
- Magnetic mounting
- Lightweight
- **WL1000R**

FLOODLIGHT



- 12 watt Floodlight
- 57 metre distance
- 60 degree angle
- Cast Aluminium construction
- Operating voltage 9-36volt DC
- **FLDW12 - BLACK**

BUSHMAN PLUS

The Original Bushman Insect Repellent.
Works on Mosquitoes, Sandflies, Flies, Ticks & Leeches.

Non Greasy, Pleasant Scent, Repels for Hours!
Developed in Tropical Northern Australia.
Made in Australia.

20% DEET with SUNSCREEN



PUMP PACK 100ml **AEROSOL 50gm** **AEROSOL 150gm** **AEROSOL 350gm**

BUSHMAN PRO

A Heavy Duty formula of the famous Bushman Insect Repellent.
Works on Mosquitoes, Sandflies, Flies, Ticks & Leeches.

Non Greasy, Pleasant Scent, Repels for Hours!
Developed in Tropical Northern Australia.
Made in Australia.

40% DEET



PRO 60gm **PRO 130gm** **PRO 225gm**

BUSHMAN NATURALS



A natural alternative for the whole family.
Made from Lemon & Eucalyptus, this Aerosol Free Pump Spray is ideal for Mosquitoes, Sand Flies, Black Flies, Stable Flies & Midges. Up to 9 hours protection from Mosquitoes.

145ml

SUNSCREEN + ZINC



SPF 50+ with ZINC
Very high protection Sunscreen.
Broad Spectrum, UVA/UVB protection.
Dermatologically tested and contains Aloe Vera and Vitamin E.
Water Resistant for 4 hours.

125ml

BUSHMAN GEL



An EXTRA HEAVY DUTY formula of the famous Bushman Insect Repellent.
Works on Mosquitoes, Sandflies, Flies, Ticks & Leeches.
Non Greasy, Pleasant Scent, Repels for Hours!
Developed in Tropical Northern Australia.
Made in Australia.

80% DEET with SUNSCREEN



ITCH FIX



Bushman Itch Fix is ideal for Insect Bites and Sunburn.
It relieves and repairs minor skin irritations.
It contains natural actives Aloe Vera, Witch Hazel and Chamomile.

75grams

PETE



Natural Straw
Adjustable

FISHERMAN #1



Natural Straw, Chin Rope with Toggle
One Size Fits Many

FISHERMAN #2



Natural Straw, Chin Rope with Toggle
One Size Fits Many

TIMBER CAMO



Cotton/Polyester Cap
Available in True Timber Camo.
Adjustable

STALKING CAMO



Cotton/Polyester Cap
Available in Olive Camo or Grey Camo
Adjustable

OUTBACK JACK



Brown Cotton/Polyester
Available in sizes
Med:57cm Lge:59cm X-Lge:61cm

BLACK CAMO



Cotton/Polyester Cap
Available in Black Camo.
Adjustable

6 PANEL CAMO



Cotton/Polyester Cap
Available in Camo Green or Camo Brown.
Adjustable

BEANIE - ACRYLIC



Acrylic. Available in Black, Bottle Green, Charcoal, Maroon, Navy or Pink

BEANIE - MICRO



100% Polyester. Available in Black, Bottle Green, Charcoal, Navy or Pink

ADRIANA



Natural Straw, Beaded band
One Size Fits Many

AMANDA COWBOY



Natural Straw, Beaded band
One Size Fits Many

CHELSEA



Natural Straw, Beaded band
One Size Fits Many

CHARLOTTE



Natural Straw, Brown Cotton band
One Size Fits Many

DOMINIQUE



Natural Straw, Rope bands with Shells
Adjustable

HOLLY COWBOY



Natural Straw, Rope bands with Buttons
Adjustable

JULIE COWBOY



Natural Straw, Shell band
One Size Fits Many

SHELLY



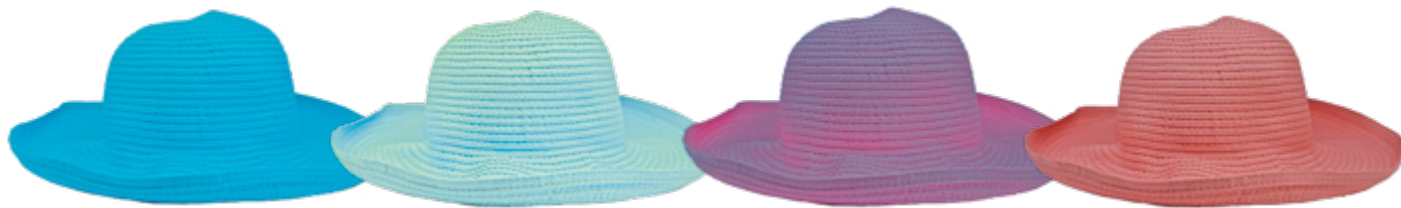
Natural Straw, Rope bands with Shells
Adjustable

ZIGGY



Natural Straw
One Size Fits Many

VICTORIA



100% Polyester. UPF 50+ Adjustable
Available in Aqua Marine, Mint, Purple & Strawberry Ice

KIDS - CARMEN



100% Polyester
Kids 3 - 6

KIDS - DONNA



100% Polyester
Kids 5 - 11

KIDS - LANA



100% Polyester
Kids 5 - 11

MENS / UNISEX



#3719
Black Frame with Smoke Lens



#3719
Black Frame with Blue Mirror Lens



#3806
Black Frame with Smoke Lens



#3806
Black Frame with Green Mirror Lens



#6045
Black Frame with Smoke Lens



#6045
Black Frame with Blue Mirror Lens



#6054
Black Frame with Smoke Lens



#6054
Black Frame with Blue Mirror Lens



#6061
Black Frame with Smoke Lens



#6061
Black Frame with Yellow Lens



#6610
Black Frame with Smoke Lens



#6610
Black Frame with Blue Mirror Lens



#7005
Black Frame with Smoke Lens



#7005
Black Frame with Multi Mirror Lens



#7027
Black Frame with Smoke Lens



#7027
Black Frame with Blue Mirror Lens



#7027
Black Frame with Multi Mirror Lens



#7052
Black Frame with Smoke Lens



#7052
Black Frame with Green Mirror Lens



#7106
Black Frame with Smoke Lens



#7106
Navy Frame with Red Mirror Lens



#7117
Black Frame with Smoke Lens



#7307
Black Frame with Blue Mirror Lens

100% UV Polarised, Category 3 Lens

LADIES



#5804

Tortoise Frame with Smoke Lens



#5835

Dark Tortoise Frame with Smoke Lens



#5865

Black Frame with Smoke Lens



#5867

Black Frame with Smoke Lens



#7021

Black/Gold Frame with Smoke Lens
100% UV Polarised, Category 3 Lens



#7311

Red Retro Frame with Smoke Lens

METAL FRAMES



#2801

Black Frame with Smoke Lens



#2812

Black Frame with Smoke Lens



#2812

Black Frame with Green Mirror Lens



#2816

Black Frame with Smoke Lens



#3502

Gold Frame with Amber Lens



#3503

Gold Frame with Amber Lens



#4768

Black Frame with Smoke Lens

Juro Ozpro Tackle is also the Agents for Tonic Eyewear in Victoria and Southern N.S.W. (Nowra/Canberra South only)



Since it was launched into the Fishing & Boating market, Tonic has amazed it's customers with the wonders of 21st century optics. Tonic's unique Crown Corning Lenses represent the culmination of a 27 year quest to constantly push the boundaries of optical technology. In 1992, after 6 years learning the optics of high-end safety glasses, Tonic's founder applied the very best technology then available to introduce what became Australia's favourite polarized fishing sunglasses. Fast forward 17 years and Tonic was convinced they could take sunglasses to a whole new level with 21st Century Optical Technology - and Tonic was born. To create Tonic, they adopted Japan's two big optical breakthroughs of the past decade, unprecedented wrap-around clarity and exceptionally lightweight glass lenses.

AIR PUMPS



1.5 Volt boxed aerator
Two speed, water resistant



12 Volt, Two speed
Fits in a car cigarette Lighter

ATTRACTOR BEADS



LUMO GREEN



RED

1mt of Tubing with
20 x 6mm Beads

BAIT BUCKET



Durable Plastic.
Features Divider and Belt

BAIT SIEVE



Durable Plastic.
Simply fit a bike tyre tube to make it float.

BAIT PUMPS



Juro Stainless Steel 30"
King Size Bait Pump with EVA grips

BAIT PUMP WASHER SETS



Novateur Set Includes:
Spacers, Washers & Locking Nut



Juro Ozpro Tackle Set Includes:
Metal Spacers, Rubber Washers & Wingnut

BOAT BUNGS

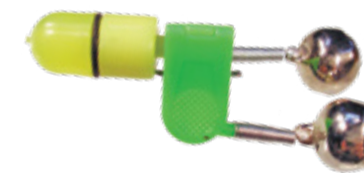


LARGE



SMALL

BELLS



BELL with LIGHT
Available in
Pre Pack



DOUBLE
Available in
Pre Pack or Bulk (100)

FLOATS



WATERFILL ROUND
Sml, Med
2pcs per pkt



WATERFILL OVAL
Sml, Med
2pcs per pkt



CHAP ON LED

- Amazing running Float
- Available in Green or Red
- Size 37.5mm x 29mm dia.
- Weighs 12.5grams
- Visibility 100mt
- Water Activated
- Comes with 2 x LR41 Batteries



FOAM TOPPER
Med & Lge
1pcs per pkt



SQUID FLOAT
LGE UW & WTD
1pcs per pkt

Comes with Starlight, Stoppers & Holder



LED FLOAT
10 or 15 grams
Comes with Lithium Battery



BLACKFISH
Sml & Med
2pcs per pkt



WOOD QUILL
Traditional Quill 20cm
2pcs per pkt

FEEDERS



Lead base Berley Cage.
Available in sizes: 20, 25 & 40grams.

FISH GRIPPERS



Designed especially for handling spiky fish like Flathead, also works well on slimy fish. Curved Handle for more comfort.

FLOAT STOPPERS



Ideal Stoppers for Floats & Sinkers.
Makes it Easy to adjust the length of your leader.
2 rings per pkt

FISH SCALERS



Round scaler head, double sided with plastic handle

FLATTY FLIPPERS



Designed especially for de hooking Flathead. Will also work on most fish species in particular fish with spikes or spines.

GIMBAL BELT

NEW



Economy Gimbal Bucket will support the angler when fighting a large fish. Comes with Stainless Steel Pin.

FISH MEASURES



38cm, Legal length, durable plastic. State sizes for common species printed on the back.



80cm Extendable, Legal length, durable plastic. State sizes for common species printed on the back.

FISH DONGA



Heavy Duty Timber Fish Donger with a rope wrist strap.
Ideal for Gummy Sharks, other Shark species and to pacify large fish.

MINI GRIPPERS



A miniature Gripper that is superb on smaller species. Made from high grade Stainless Steel & featuring full Stainless Steel Grippers.

GRIPPERS with SCALES



Made from high grade Stainless Steel & featuring full Stainless Steel Grippers and In-Built Scales to 15kgs.

HAND SPEARS



(Hawaiian Sling)
Ideal for Floundering. Aluminium 2pce

HAND SPEAR RUBBERS



(Hawaiian Sling)
Spare Replacement Rubber

HANDCASTERS



RIGGED
Available in: 4", 6" & 8"

HOOK COVERS



ACTUAL SIZES

Treble hook protector. 50pcs per bag
Sizes: #1, #2, #3, #4 & #5

BUCKET of KNIVES



10cm (4") Bait knife with plastic sheath.
Features Scaler Back with Bottle Opener
24 pcs per Bucket



OYSTER KNIVES



3" Snub Nose Blade
Moulded Grip Handle
Comes with Black, Blue or Red handle

BAIT KNIVES



10cm (4") Bait knife
with a soft True Grip moulded handle.
Comes with Sheath.

NUCLEAR LINE



Juro NuClear line is 100% Co-Polymer fishing line and is one of the best all round fishing lines available. It features excellent linear strength, high twist resistance and exceptional knot strength. Precision Parallel Wound Spools.

Available in 300mt Spools

Available in sizes:
6, 8, 10, 12, 15, 20, 25 & 30lb

DOWNUNDER SINKERS



Smaller alternative to Paravanes.
Available in sizes: 10, 15, 25, 50 & 60 grams

PARAVANES



Heavy duty plastic construction
Yellow or Green

ROD HOLDERS



PVC SAND SPIKE with PIN



SURF ROD HOLDER - METAL



BANK ROD HOLDER

SINKERS / SINKER PACKS



SPLIT SHOT
Sizes: 0, 1, 2 & 3



BALL
Sizes: 00, 0, 1, 2, 3, 4, 4A, 5 & 6



BEAN
Sizes: 1, 2, 3, 4, & 5



BOMB
Sizes: 00, 0, 1oz, 2oz, 3oz, 4oz, 5oz & 6oz



STAR
Sizes: 2oz, 3oz, 4oz, 5oz & 6oz



SNAPPER
Sizes: 70gm, 115gm, 140gm, 175gm, 215gm & 240gm



SURF BREAKER
Sizes: 2oz, 3oz, 4oz & 5oz



SPLIT SHOT
Sizes: 8, 6, 4, 2, BB, SSG, AAA



BALL
Sizes: 00,0, 01, 1, 2

SLIDER CLIPS



SMALL - CLEAR



MEDIUM- BLUE



LARGE - RED

Running Sinker Clips, convenient and quick sinker change system.
Available in: Pre Packs (5pcs per pkt) or Bulk (50pcs per bag)

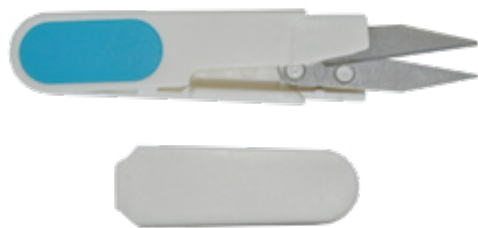


Pre-Pack



Bulk Pack

SCISSORS



Fishing Scissors. Ideal for trimming knots.
Bulk (Lots of 20)

SEAWATER SOAP



Foams in Saltwater or Hardwater
Ideal for Fishing, Boating & Camping
115grams

GOURMET WOOD CHIPS



Smokin' Joe's Gourmet Flavoured Wood Chips provide the ultimate infusion of flavours to your Fish, Meat, Ham and Poultry. Manufactured to the highest standards these chips give a richer and more dense flavour to your food for the ultimate smoking experience. Manufactured from 100% Australian or Imported timbers from the U.S.A. Packed in resealable bags to retain flavours and freshness. Insist on Smokin' Joe's Wood Chips!

Available in 10 flavours:
400gm Nett pkt
APPLE, CHERRY, HICKORY, MESQUITE, MOUNTAIN ASH, PEACH, PEAR, PECAN, PLUM & RED GUM

SMOKER DUST



Smokin' Joe's Smoker Dust provide the ultimate infusion of flavours to your Fish, Meat, Ham and Poultry. Smokin' Joe's Smoker Dust offers a quicker burn than chips and is ideal for small portable Hot Smokers. It can be mixed with Wood Chips to create the Ultimate Smoker mix! Insist on Smokin' Joe's Smoker Dust!

Available in 4 flavours:
200gm Nett pkt
APPLE, CHERRY, HICKORY & MALLEE

TACKLE PACKS



SENSHI GRAB 'N' GO BOX
108pce Start up kits (Refer to Page 59)



SNAPPER
Start up kits



WHITING
Start up kits

NEW

LANDING NET

Fixed handle Landing Net with **soft rubber gripped handle**. An ideal net for boat or landbased fishing applications for small to medium sized fish.

Head Size: 46cm x 40cm
Handle Length: 70cm
Drop: 50cm



RELEASE NET

Designed by the Juro Pro Test Team with **catch and release** fishing in mind. These nets allow for fish to be netted without causing any harm. **The soft, knotless netting does not remove any scales or protective slime from the fish.** These nets also eliminate the problem of treble hooks fouling in the netting. Juro Release Nets feature a telescopic handle with a soft rubber grip.



Small features:
Head Size: 45cm x 36cm
Handle Length: 65cm
Drop: 40cm

Large features:
Head Size: 52cm x 50cm
Handle Length: 75cm
Drop: 50cm

PRAWN NET

A fixed handle prawn net with soft rubber grip and knotless netting.

Extra long drop of 80cm allow collection of extra prawns without removing.
Head Size: 45cm x 50cm
Handle Length: 100cm
Drop: A MASSIVE 80cm!



TELE FOLDING NET

A **soft knotless net** with a 80cm drop. A **telescopic handle** allows for easier storage inside a boat. The handle has 2 extensions that allow the handle to extend out 1.5mts. **Folding Head** that allows for convenient storage

Head Size: 50cm x 52cm
Handle Length: 150cm
Drop: A Massive 80cm!

TFNET



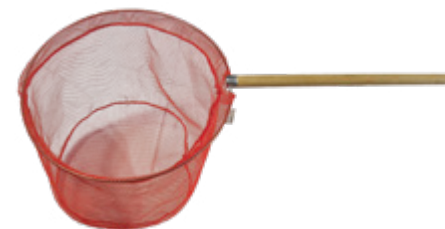
STREAMASTER NET

Stream style wading net with **soft knotless netting** that prevents damage to fish. Soft rubber grip handle with elastic lanyard. Ideal for deep wading for Trout.

Head Size: 40cm x 35cm
Handle Length: minimal
Drop: 30cm



BAIT NETS



Med: 50cm Handle 25cm Drop



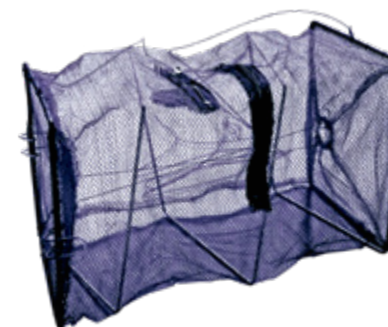
Sml: 35cm Handle 22cm Drop



Mini: 35cm Handle 15cm Drop

Ideal for collecting bait and for the kids to play with on the beach.

BAIT TRAP



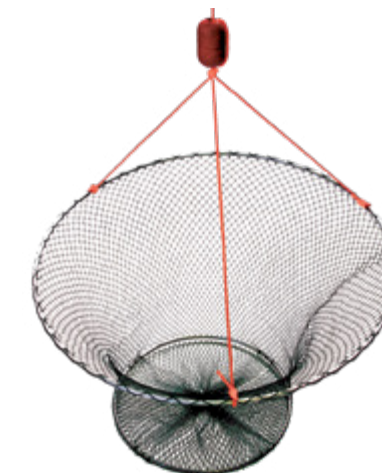
Folding bait trap, collapsible. **1 1/2" Funnel.** Ideal for catching Baitfish & Shrimp.

CRAB NETS



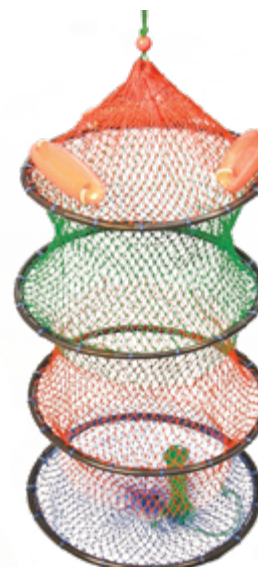
Two ring Crab Net collapsible with float

YABBY NET



Heavy Duty Two ring Yabby drop pot, collapsible

4 RING KEEPER NET



Keeper net with floats attached. Ideal for keeping your catch alive.

SCALER BAG



HEAVY DUTY Scaler bag. Removes fine scales.

2pce SHRIMP TRAP



2pce, durable plastic **1 1/2" Funnel.** Ideal for catching river Shrimp.

McLaughlin's Bait & Berley have been involved in the Bait business since 1946.

They have used all their years of experience to produce the Ultimate range of Berley products to cover all facet of fishing. Their range of Berley products are target technique and species specific and feature tested and proven secret formulas.

BLOOD BITS



'Advanced Formula' smaller pellet that is impregnated with a Blood Red secret formula that colours and also scents the pellets. Creates a Blood Red trail through the water along with a powerful scent!

Available in 1.5kg Re-Sealable Bag

GREEN LIP BITES



'Advanced Formula' smaller pellet that is impregnated with a Green secret formula that colours and also scents the pellets. Creates a Green trail through the water along with a powerful scent!

Available in 1.5kg Re-Sealable Bag

PINK BITS



'Advanced Formula' smaller pellet that is impregnated with a Pink secret formula that colours and also scents the pellets. Creates a Pink trail through the water along with a powerful scent!

Available in 1.5kg Re-Sealable Bag

BIG RED NUTS



'Advanced Formula' larger Nut that is impregnated with a secret formula and is also scented. Sinks quickly through the water column and is ideal for deeper water, faster currents and a quicker sink rate. Drives Snapper crazy!

Available in 1.5kg Re-Sealable Bag

BIG RED NUTS



'Advanced Formula' larger Nut that is impregnated with a secret formula and is also scented. Sinks quickly through the water column and is ideal for deeper water, faster currents and a quicker sink rate.

**Drives Snapper crazy!
Available in a 5lt or 10lt Bucket**

BREAM NIBBLES



A Small Berley Pellet. Deadly on Southern Black & Yellowfin Bream. McLaughlin's special secret formula mix that has an irresistible smell that these fish crave. Creates a feeding frenzy!

Available in 1kg Re-Sealable Bag

WHITING NIBBLES



A Small Berley Pellet. Deadly on King George, Yellowfin & Sand Whiting. McLaughlin's special secret formula mix that has an irresistible smell that these fish crave. Creates a feeding frenzy!

Available in 1kg Re-Sealable Bag

SALTWATER NIBBLES



Small Berley Pellet that sink quickly through the water column. Ideal for a variety of Saltwater species. McLaughlin's special secret formula mix that has an irresistible smell. Creates a feeding frenzy!

Available in 1kg Re-Sealable Bag

SNAPPER NUTS



Super large Berley Nut that sinks quickly through the water column. Ideal for fast flowing water and deep water situations. McLaughlin's special secret formula mix that has an irresistible smell that Snapper crave!

Available in a 5lt or 10lt Bucket

PIER / JETTY MIX



A smaller finer Berley with dust and crumble that floats and sinks ultra slowly. Ideal for Garfish, Mullet, Tommy Ruff and Mackerel. McLaughlin's special secret formula mix that Surface fish crave.

Available in 600gm Re-Sealable Bag

McLaughlin's Bait & Berley have been involved in the Bait business since 1946.

They have used all their years of experience to produce the Ultimate range of Berley products to cover all facet of fishing. Their range of Berley products are target technique and species specific and feature tested and proven secret formulas.

FRESHWATER NIBBLES



Small Berley Pellet that sinks quickly through the water column. Ideal for a variety of Freshwater species. McLaughlin's special secret formula mix that has an irresistible smell that Freshwater fish crave!

Available in 1kg
Re-Sealable Bag

TROUT FOOD (F)



A 7mm Floating Pellet that is fed to Trout in Trout Farms. High potency. Ideal for Brown, Rainbow & Brook Trout as well as Chinook Salmon. Deadly in stocked Rivers and Lakes. Can be used in Oval Blockend Feeders.

Available in 1kg
Re-Sealable Bag

TROUT FOOD (S)



A 4mm Sinking Pellet that is fed to Trout in Trout Farms. High potency. Ideal for Brown, Rainbow & Brook Trout as well as Chinook Salmon. Deadly in stocked Rivers and Lakes. Can be used in Oval Blockend Feeders.

Available in 1kg
Re-Sealable Bag

TUNA BERLEY LOGS



Small
(500gm)



Medium
(1kg)



Large
(2kg)



Tossers
(1kg)

A compressed 100% Tuna and Tuna Oil berley that has an ultra slow release and amazing Oil Slick! Ideal for use in Wire and Plastic berley pots and in fast currents.
DOES NOT REQUIRE REFRIGERATION

SLICKS OIL



100% Pure Oil that is highly purified, refined and made from the finest Baitfish. Produced and bottled in Australia, it is rich and thick in consistency & creates the Ultimate surface slick!

Available in 500ml, 1L & 5L

SALTWATER ESSENCE



This special formula essence includes both colour and scent. The colour allows the angler to follow exactly which direction your berley is going and the scent will help to attract fish. Shake well before use.
Available in 500ml. Blood Red & Sea Green

ANISEED OIL



Pure Aniseed Oil. 25ml Bottle. Ideal as an additive for Berley. Superb in Freshwater.

TUNA OIL



100% Pure Tuna Oil that is highly purified and refined. It is rich and thick in consistency & creates a dynamic surface slick! Create a Berley slick by pouring it straight from the bottle or use as an additive to create your own superb berley mixture.
Available in 500ml & 1L

WIRE BERLEY POTS



Lead weighted wire berley dispenser. Ideal for faster currents

WTD BERLEY POTS



Durable Plastic. Lead weighted base with rope attached

BAIT THREAD



Bait Thread is an elastic thread that helps hold soft baits in place and avoids them coming off during casting. Ideal for Surf, Rock and Squid fishing.

BERLEY BUCKET



Durable Plastic, berley dispenser

McLaughlin's Bait & Berley have been involved in the Bait business since 1946. They have used all their years of experience to produce the Ultimate range of Berley products to cover all facet of fishing. Their range of Berley products are target technique and species specific and feature tested and proven secret formulas.

The Juro Ozpro Tackle Team



Rick Massie
Sales Manager
Tournament Team



Keith Brooker
Warehouse Manager



Ian Rickard
Sales



Ross Kyle
Sales



Chris Wong
Founder of
Jig Star International



Corey Gallagher
Tournament Team



Paul Siemaszko
Tournament Team



Phone: (03) 9555 5433 Fax: (03) 9555 1048 Email: jurofish@bigpond.net.au

Visit the website at www.jurofishing.com

Whilst ever care has been taken in the production of this Catalogue, Juro Pty Ltd is not responsible for any product changes, typographical and pictorial alterations, errors or omissions.